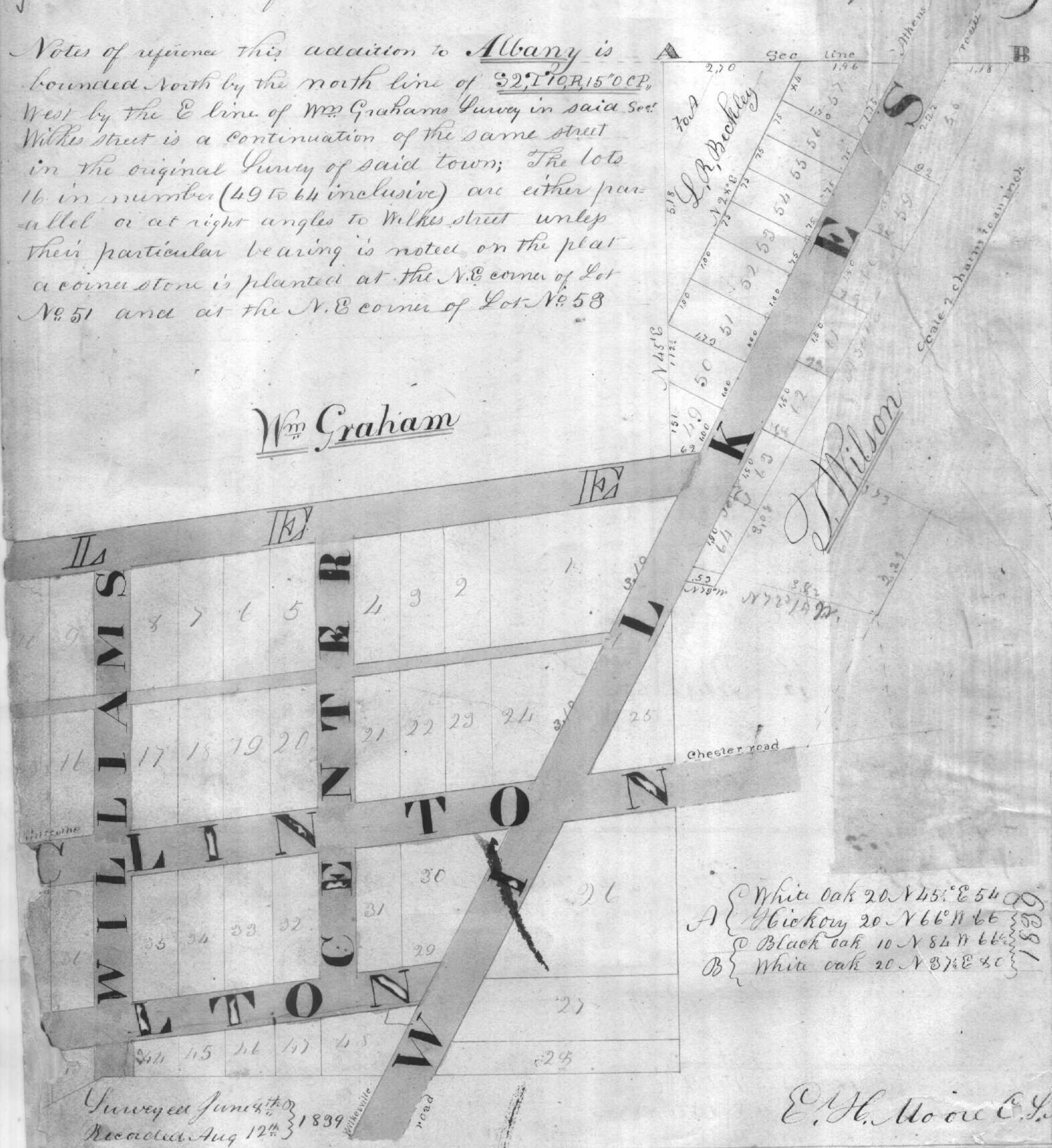


Plan & Notes of L.R. Beckley addition to the town of Albany

Notes of reference this addition to Albany is bounded north by the north line of S21°10'15"OCP, West by the E line of Wm Graham's Survey in said Sec. Wilkes street is a continuation of the same street in the original Survey of said town; The lots 16 in number (49 to 64 inclusive) are either parallel or at right angles to Wilkes street unless their particular bearing is noted on the plat a corner stone is planted at the N.E corner of Lot No. 51 and at the N.E corner of Lot No. 53

Wm Graham



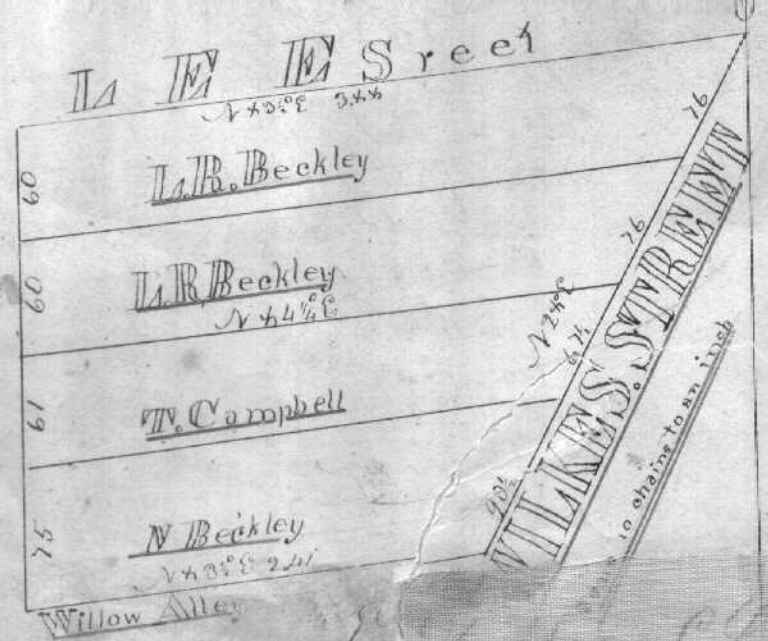
- A { White oak 20 N 45° E 54
- { Hickory 20 N 66° N 66
- { Black oak 10 N 84° N 66
- B { White oak 20 N 37° E 40

Surveyed June 4th 1839
Recorded Aug 12th 1839

E. H. Moore C. S.

Vol. 413 Plat & Notes of a subdivision of Pt. no. Albany

Surveyed June 4th 1839
Recorded August 29th 1839 for L.R. Beckley



E. H. Moore C. S.