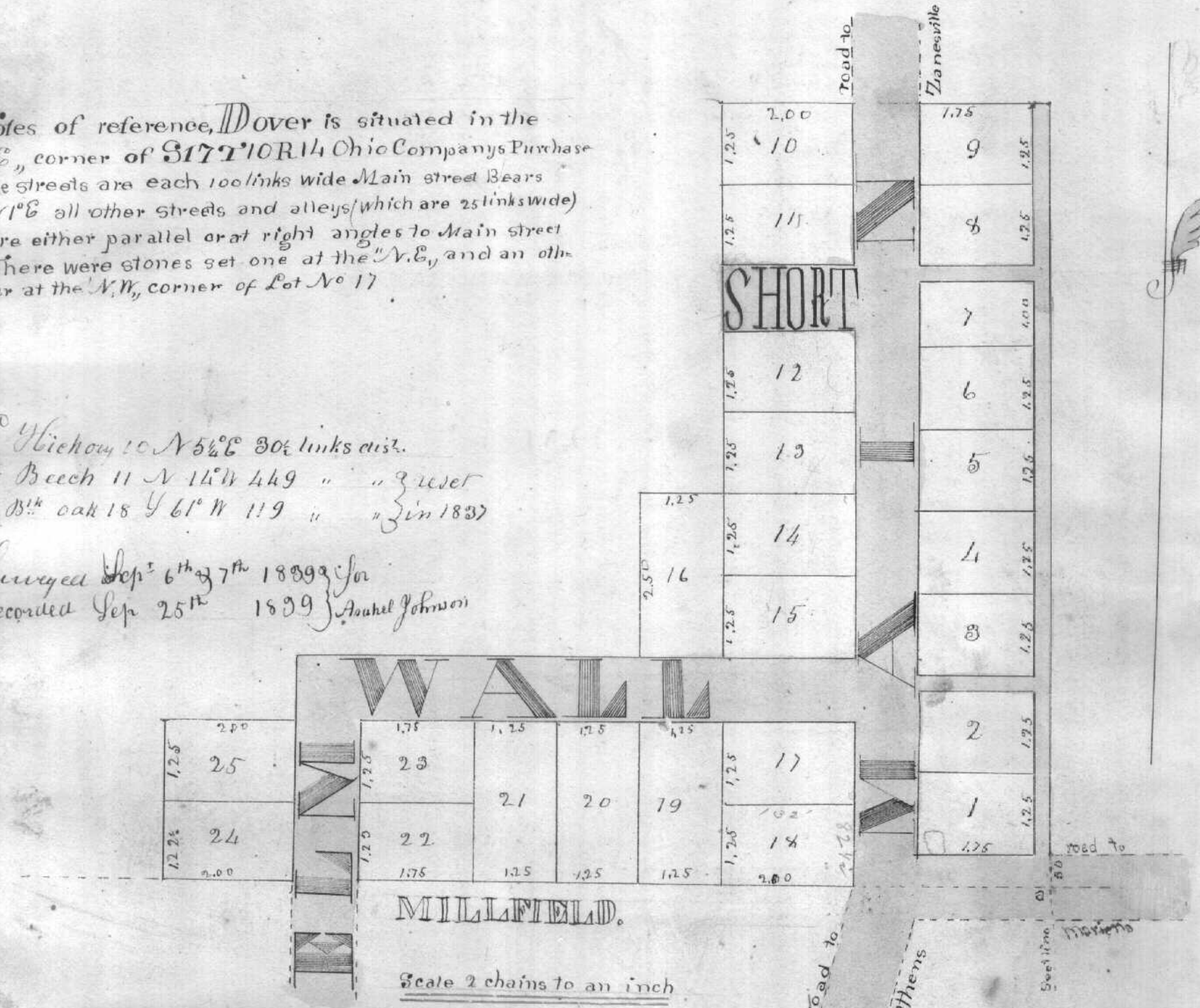


No 451

DOVER

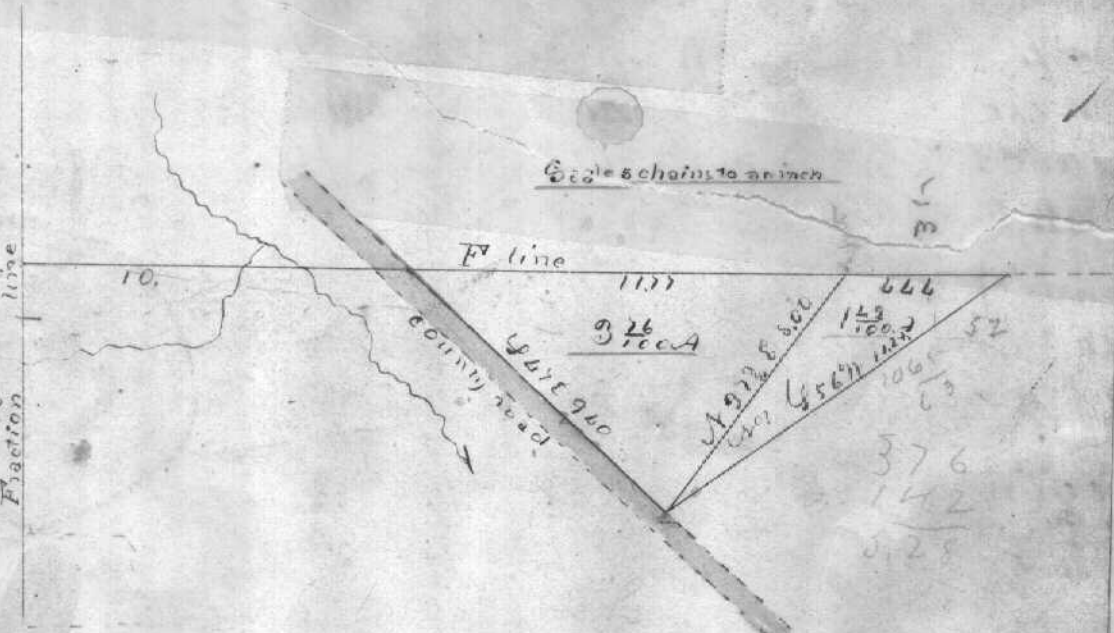
Notes of reference, **DOVER** is situated in the  
 S.E. corner of **317210R14** Ohio Company's Purchase  
 The streets are each 100 links wide Main street Bears  
 N<sup>o</sup> 6 all other streets and alleys (which are 25 links wide)  
 are either parallel or at right angles to Main street  
 There were stones set one at the N.E. and an other  
 at the N.W. corner of Lot No 17

N<sup>o</sup> 9 { Hickory 10 N 5 1/2 E 30 1/2 links dist.  
 a P.E. { Beech 11 N 14 W 449 " " " set  
 P 17 { Oak 18 S 61 W 119 " " " in 1837  
 Surveyed Sep 6<sup>th</sup> & 7<sup>th</sup> 1839 for  
 Recorded Sep 25<sup>th</sup> 1839 Samuel Johnson



No 452 Samuel Denman's Survey **F 30 T 10 R 14** August 27<sup>th</sup> 1839

"to wit" Not Begins at a point in the  
 N line 21.77 E of the N.W. corner of  
 Said Tracton thence S 37 1/2 N 800  
 to a B Walnut stump a Hickory  
 10 S 71 1/2 E 35 a Lynn 11 S 77 1/2 E 82  
 thence N 56 E 11.28 thence N 4.44  
 to the place of Beginning contain-  
 ing 142 1/2 A



Surveyed for Samuel Denman  
 August 27<sup>th</sup> Recorded Sept. 27<sup>th</sup> 1839