

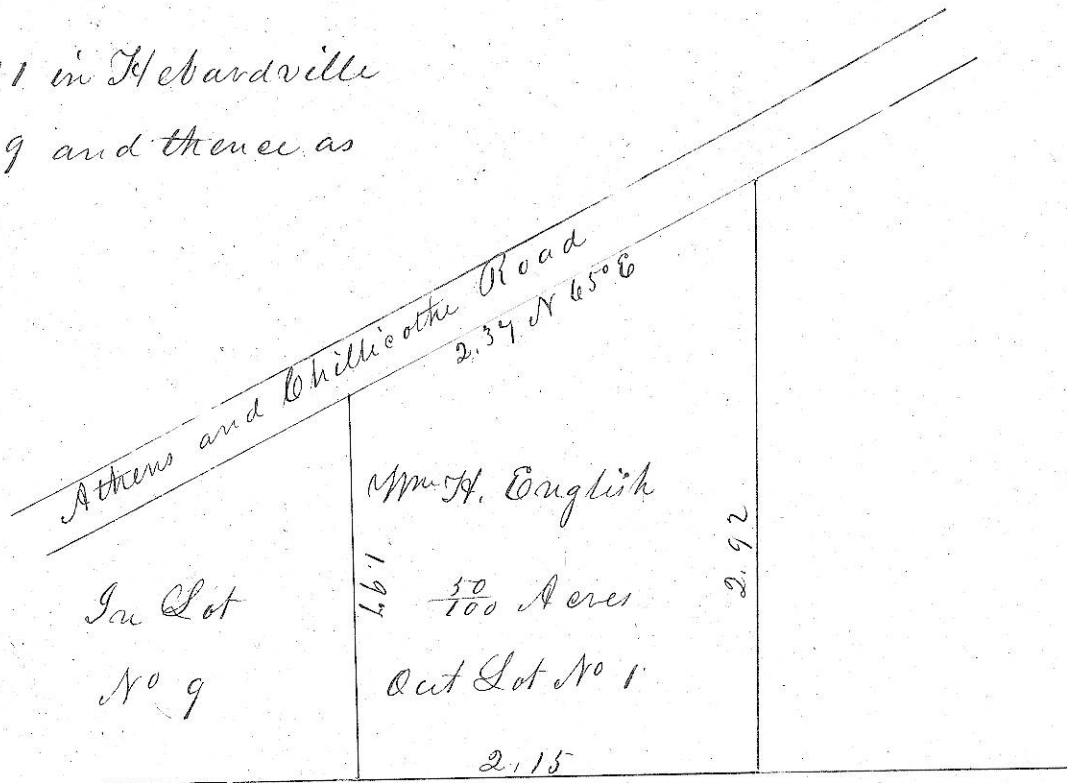
Out Lot No. one, Hebardville

Plan and notes of a survey of out Lot No. 1 in Hebardville commencing at the NE corner of Lot No. 9 and thence as described on the Plat

Variation 1° West

ENVELOPE: 76A

ADDITION OF HEBARDVILLE



Scale one Chain to an inch

Surveyed June 6th 1850

Surveyors office Athens County Ohio. I hereby certify the above to be a correct Plat & notes of the above described lot of land

John A. Sclay, C.S., A.C.

Entered for Record May 23rd 1851 & Recorded May 29th 1851

Attest W.H. Bartlett Recorder

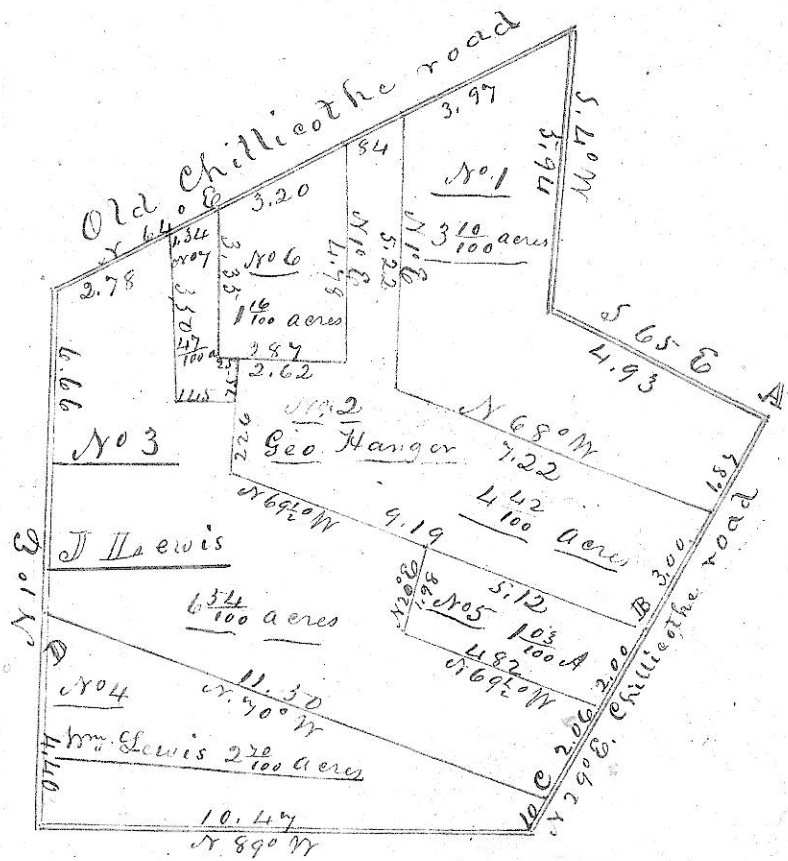
Plat and notes of a division of a lot of land sold by Amos Thompson, off the NW quarter of Sect. 2 Town 10, Range 15, commencing at the NW corner of Mrs. G. Lewis' lot, thence N 1° E 11 chains 6 links thence N 64 1/2° E 12 chains 13 lvs thence S 41° W 5 chains 9 1/4 lvs thence S 65° E 11 chains 9 1/4 lvs to S 29° W 9 chains 63 lvs thence N 89° W 10 ch. 4 1/4 lvs to place of beginning containing 16 7/100 acres

The area of the four general divisions are noted on the plat which includes the area of their subdivisions. Distance noted in chains N.Y. The division line with lot No. 243 commences at thence N 69 1/2° W 9 chains thence N 1° E 2 chains 30 West 25 lvs thence N 1° E 3 1/2 35 lvs to the North side of A) Stone set for corner White oak 30 inches N 43° E B) Stone set for corner C) Sugar 14 inches 5 1/2 D) Hickory 14 " N 75°

ENVELOPE: 76A

AMOS THOMPSON LAND -
LEE TWP
BOTTOM HALF PAGE

SEE DB 17 Pg 430



Scale 4 chains to the inch

Surveyed August 26th 1850

Surveyors office Athens County Ohio, I hereby certify the above plat and notes to be correct

John A. Sclay, C.S., A.C.

Entered for Record September 27th 1851 & Recorded September 29th 1851

Attest W.H. Bartlett Recorder