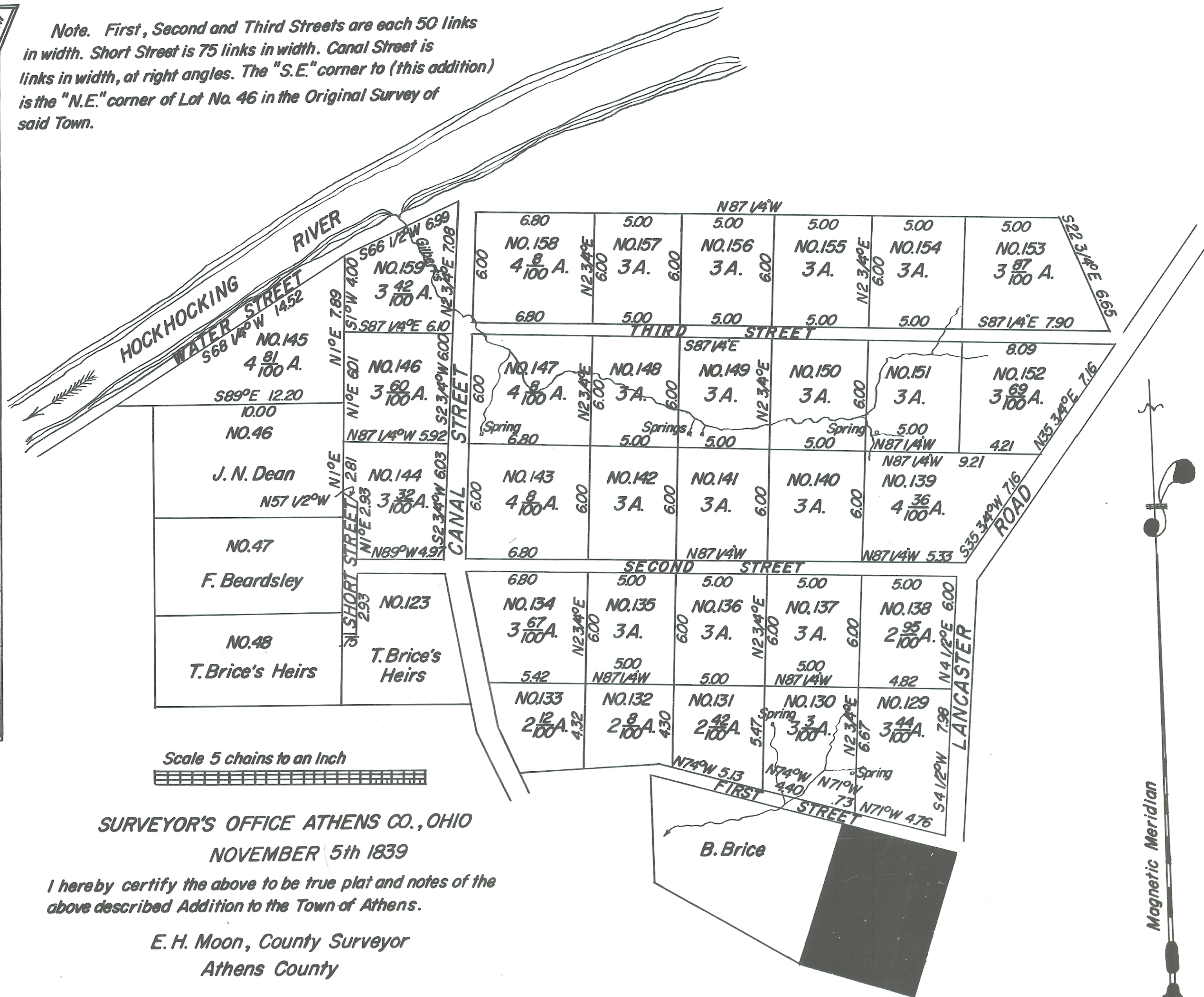


# Plat and Notes of 31 Additional Out-Lots to the Town of ATHENS.

Cor-ners	Trees	Inches in diameter	Bear- ing	Links distance
N.W.	Black Oak	10	N84 1/2 W	38
129	Hickory	6	N42W	36
N.W.	Do.	8	S70E	25
130	White Oak	9	N24E	57
S.W.	Hickory	3	N80 1/4 E	82
132	One tree only			
N.W.	Black Oak	8	N38 1/2 W	54 1/2
139	Hickory	6	S82 1/2 W	38
N.W.	White Oak	8	N51W	20 1/2
140	Black Walnut	8	N77 1/2 E	29
N.W.	Buckeye	8	N77 1/2 E	60 1/2
143	Butternut	9	S60 1/2 E	44 1/2
N.W.	Chesnut Oak	10	S10 1/2 W	99
144	Maple	10	N25W	60 1/2
N.W.	Beech	10	N72W	17 1/2
148	Do.	10	N45 1/2 E	50
N.W.	Hickory	9	S64W	3
149	White Oak	8	S34E	11
N.W.	Do.	9	S2 3/4 W	16 1/2
151	Do.	6	N51 1/2 W	69
N.W.	Black Walnut	9	S66 1/2 W	61
152	Honey Locust	6	N22 1/4 E	26
N.E.	White Oak	3	S71E	27
152	On a mound			
S.W.	Hickory	3	S40 1/2 W	24
152	One tree only			
N.W.	Water Beech	10	S47 1/2 E	55
147	Buckeye	7	N14 1/2 W	21 1/2
S.E.	Yellow Oak	18	S37 W	59 1/2
159	Sycamore	20	S68W	127
N.W.	White Oak	6	N73W	64
154	Do.	8	N21E	85

Note. First, Second and Third Streets are each 50 links in width. Short Street is 75 links in width. Canal Street is links in width, at right angles. The "S.E." corner to (this addition) is the "N.E." corner of Lot No. 46 in the Original Survey of said Town.



ENVELOPE; 403B

PLAT & NOTES OF 31 ADDITIONAL  
OUT LOTS TO ATHENS

SURVEYOR'S OFFICE ATHENS CO., OHIO  
NOVEMBER 5th 1839

I hereby certify the above to be true plat and notes of the  
above described Addition to the Town of Athens.

E. H. Moon, County Surveyor  
Athens County

Surveyed Oct. 1839, for the Ohio University  
Recorded Nov. 5th 1839, No. 357  
Re-produced - August - 1968