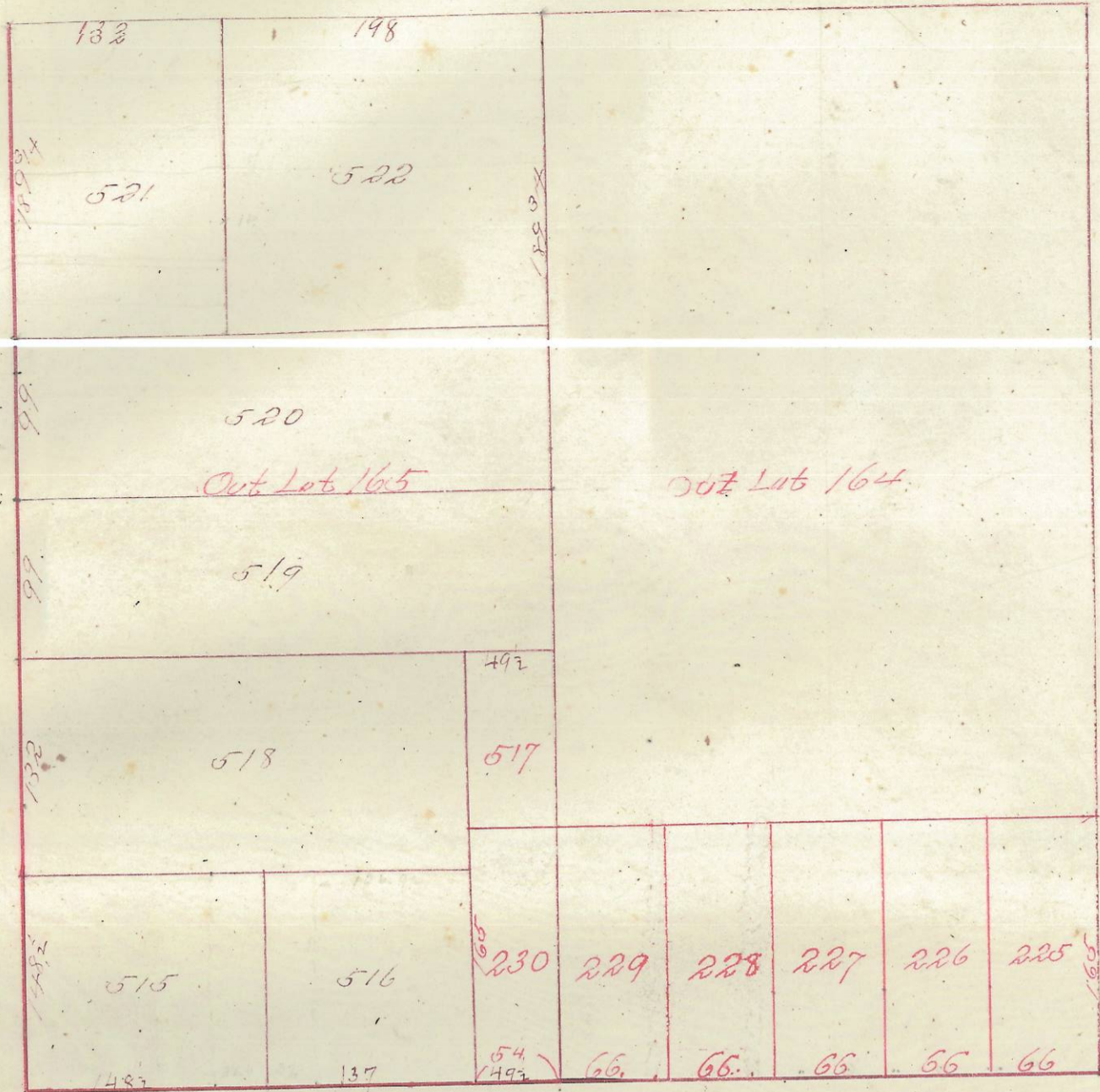


Athens

Subdivision of Out-Lot N^o 165 and 164

Scale 100ft = 1 in



The south end of Out lots 164 and lot No 230 is Otis Ballards addition the lines of the lots are parallel with the original lots
 Entered for transfer April 13th 1875
 for 60 cts. A. W. Silliman Auditor

Athens Ohio April 11th 1870
 I certify the above plat and notes are correct
 J. W. Silliman Auditor

Athens January 26th 1880
 Recorded January 26th 1880
 Attest J. W. Andrews Recd

ENVELOPE: 91A

ATHENS-SUBDIVISION OF
 OUTLOTS 164 & 165 -
 ATHENS

Athens - East of Loves Add was laid out by W. H. Potter being parts of Out Lots N^o 124 and 107. South of Loves Add being Subdivision of part of said Out Lot N^o 107 and 190
 Recorded by order of Auditor
 Scale 100ft = 1 in

Recorded January 26th 1880
 Attest J. W. Andrews Recd

