

ENVELOPE: 416A
CENTERLINE SURVEY -
DOVER & TRIMBLE TWP
ATH-13-3.87

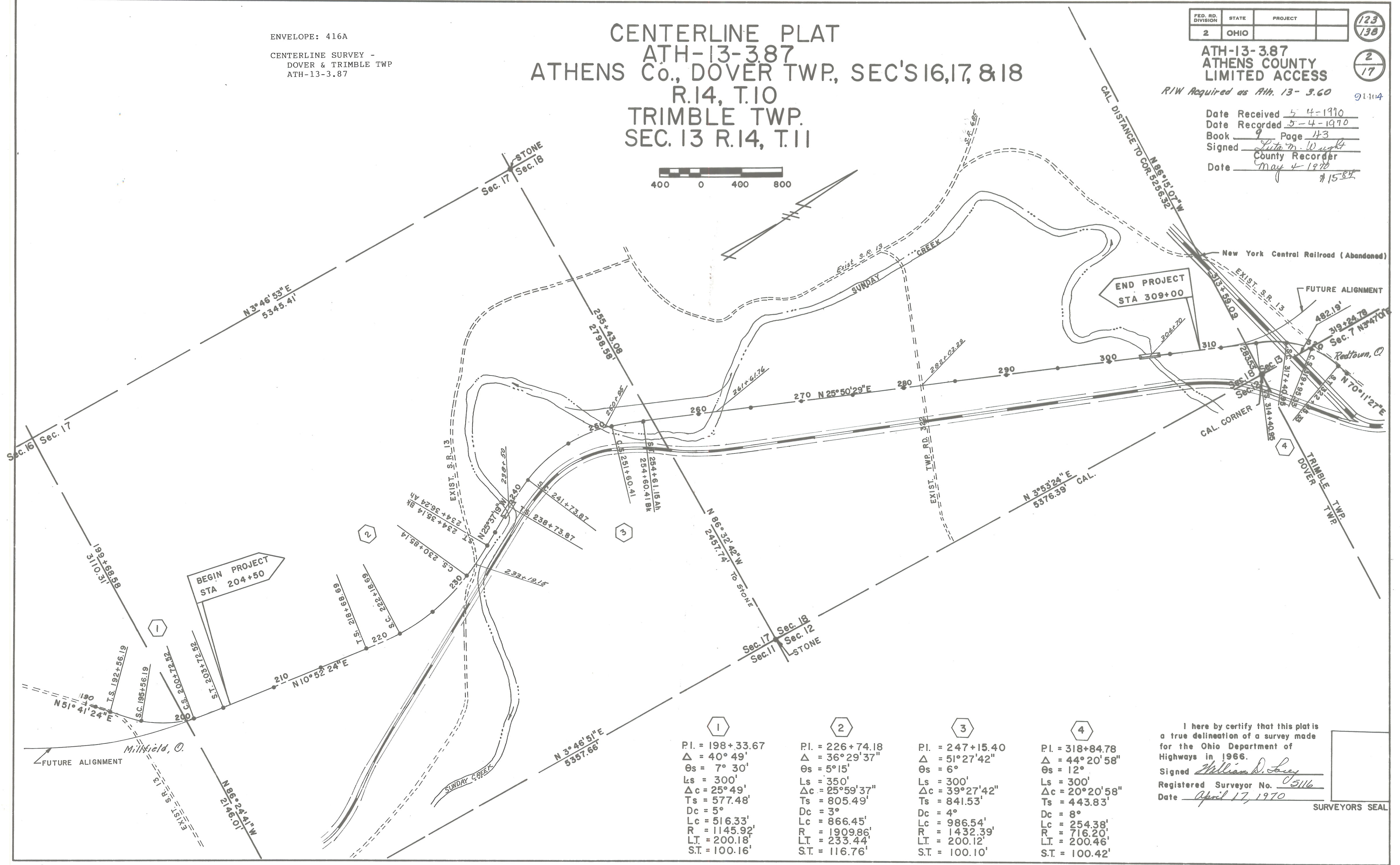
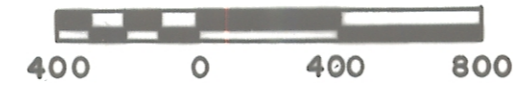
CENTERLINE PLAT ATH-13-3.87 ATHENS Co., DOVER TWP., SEC'S 16, 17, & 18 R. 14, T. 10 TRIMBLE TWP. SEC. 13 R. 14, T. 11

FED. RD. DIVISION	STATE	PROJECT	123
2	OHIO		138

ATH-13-3.87
ATHENS COUNTY
LIMITED ACCESS

R/W Required as Ath. 13- 3.60

Date Received 5-4-1970
 Date Recorded 5-4-1970
 Book 9 Page 143
 Signed L. W. Wright
 County Recorder
 Date May 4 1970



1	2	3	4
PI. = 198+33.67	PI. = 226+74.18	PI. = 247+15.40	PI. = 318+84.78
Δ = 40° 49'	Δ = 36° 29' 37"	Δ = 51° 27' 42"	Δ = 44° 20' 58"
θs = 7° 30'	θs = 5° 15'	θs = 6°	θs = 12°
Ls = 300'	Ls = 350'	Ls = 300'	Ls = 300'
Δc = 25° 49'	Δc = 25° 59' 37"	Δc = 39° 27' 42"	Δc = 20° 20' 58"
Ts = 577.48'	Ts = 805.49'	Ts = 841.53'	Ts = 443.83'
Dc = 5°	Dc = 3°	Dc = 4°	Dc = 8°
Lc = 516.33'	Lc = 866.45'	Lc = 986.54'	Lc = 254.38'
R = 1145.92'	R = 1909.86'	R = 1432.39'	R = 716.20'
LT = 200.18'	LT = 233.44'	LT = 200.12'	LT = 200.46'
ST = 100.16'	ST = 116.76'	ST = 100.10'	ST = 100.42'

I here by certify that this plat is a true delineation of a survey made for the Ohio Department of Highways in 1966.

Signed William D. Lacy
 Registered Surveyor No. 5116
 Date April 17, 1970

SURVEYORS SEAL