

# CENTER LINE SURVEY PLAT

## NEW LEXINGTON - ATHENS ROAD

### STATE ROUTE 13 SEC. (0.00 - 6.03)

### ATHENS COUNTY, OHIO

### DOVER TWP. R.14, T.10, SEC'S. 25,26,20,21

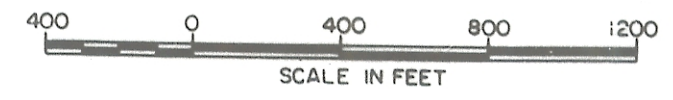
51355

Received May 13 1963  
 Recorded May 13 1963  
 Book 8 Page 51  
*Claudia E. Chappell*  
 County Recorder

CENTER LINE PLAT  
 SEC. 1.10  
 ATH. 13 (0.00 - 6.03)  
 LIMITED ACCESS

57  
 1  
 3

THIS IMPROVEMENT HAS BEEN DECLARED A LIMITED ACCESS HIGHWAY FROM STATION 0+00 TO STATION 3+18+67.25 BY ACTION OF THE DIRECTOR OF HIGHWAYS AND RECORDED IN VOLUME , PAGE , OF THE DIRECTOR'S JOURNAL PURSUANT TO LAW.



ENVELOPE: 369B  
 CENTERLINE SURVEY  
 ATH-13-0.00-6.03  
 NEW LEXINGTON - ATHENS ROAD  
 STATE ROUTE 13  
 DOVER TWP

CURVE DATA

7	8	9
PI. 62+59.48	PI. 67+41.96	PI. 72+15.87
$\Delta = 5^{\circ}15'00''$	$\Delta = 21^{\circ}41'32''$	$\Delta = 5^{\circ}15'00''$
$D_c = 2^{\circ}15'00''$	$D_c = 3^{\circ}00'00''$	$D_c = 2^{\circ}15'00''$
L = 233.33'	L = 723.07'	L = 233.33'
T = 116.76'	T = 365.92'	T = 116.76'
R = 2546.48'	R = 1909.86'	R = 2546.48'

CURVE DATA

4	5	6
PI. 13+09.35	PI. 14+78.24	PI. 16+47.64
$\Delta = 8^{\circ}00'00''$	$\Delta = 2^{\circ}51'57''$	$\Delta = 8^{\circ}00'00''$
$D_c = 3^{\circ}00'00''$	$D_c = 4^{\circ}00'00''$	$D_c = 3^{\circ}00'00''$
L = 266.67'	L = 71.65'	L = 266.67'
T = 133.58'	T = 35.83'	T = 133.58'
R = 1909.86'	R = 1432.39'	R = 1909.86'

CURVE DATA

1	2	3
PI. 3+36.67	PI. 4+79.19	PI. 6+21.78
$\Delta = 5^{\circ}00'00''$	$\Delta = 4^{\circ}44'15''$	$\Delta = 5^{\circ}00'00''$
$D_c = 3^{\circ}00'00''$	$D_c = 4^{\circ}00'00''$	$D_c = 3^{\circ}00'00''$
L = 166.67'	L = 118.44'	L = 166.67'
T = 83.40'	T = 59.25'	T = 83.40'
R = 1909.86'	R = 1432.39'	R = 1909.86'

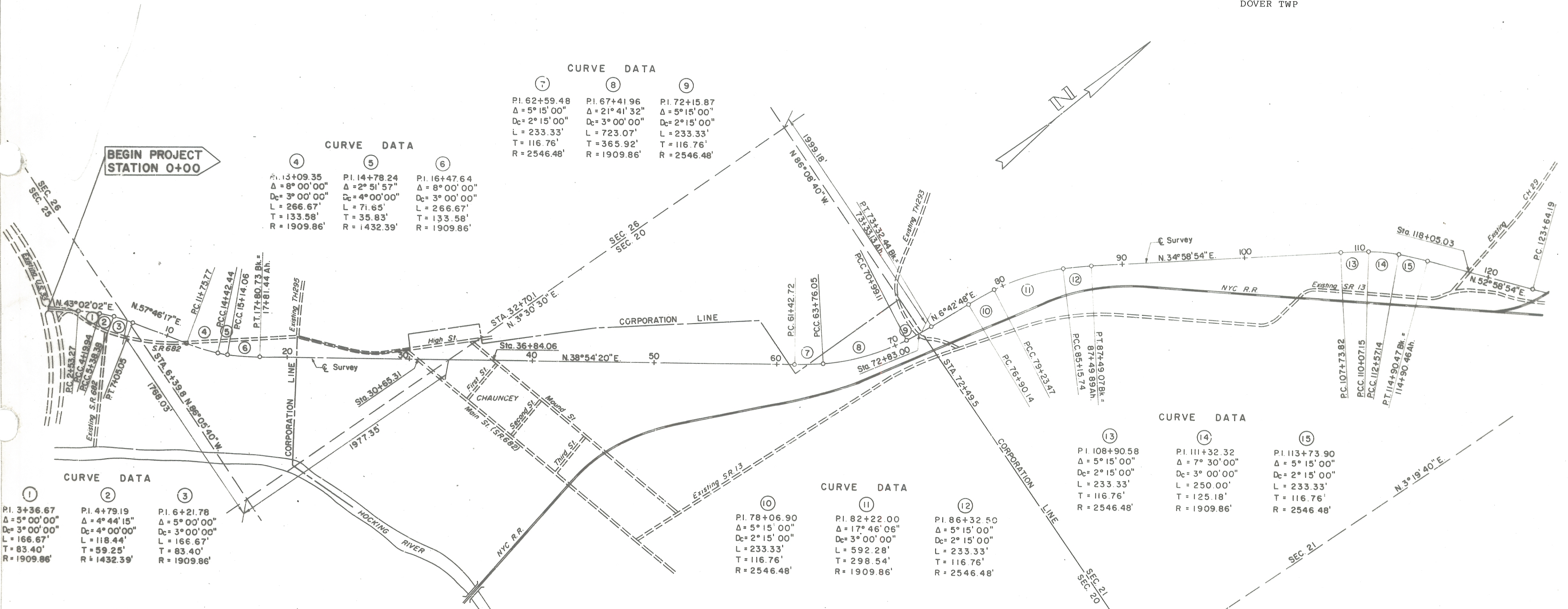
CURVE DATA

10	11	12
PI. 78+06.90	PI. 82+22.00	PI. 86+32.50
$\Delta = 5^{\circ}15'00''$	$\Delta = 17^{\circ}46'06''$	$\Delta = 5^{\circ}15'00''$
$D_c = 2^{\circ}15'00''$	$D_c = 3^{\circ}00'00''$	$D_c = 2^{\circ}15'00''$
L = 233.33'	L = 592.28'	L = 233.33'
T = 116.76'	T = 298.54'	T = 116.76'
R = 2546.48'	R = 1909.86'	R = 2546.48'

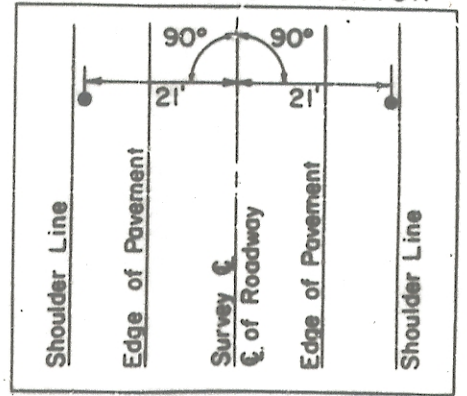
CURVE DATA

13	14	15
PI. 108+90.58	PI. 111+32.32	PI. 113+73.90
$\Delta = 5^{\circ}15'00''$	$\Delta = 7^{\circ}30'00''$	$\Delta = 5^{\circ}15'00''$
$D_c = 2^{\circ}15'00''$	$D_c = 3^{\circ}00'00''$	$D_c = 2^{\circ}15'00''$
L = 233.33'	L = 250.00'	L = 233.33'
T = 116.76'	T = 125.18'	T = 116.76'
R = 2546.48'	R = 1909.86'	R = 2546.48'

BEGIN PROJECT STATION 0+00



CENTER LINE REFERENCE MONUMENTS TO BE SET DURING CONSTRUCTION



TABULATION OF CENTER LINE REFERENCE MONUMENTS

STA. 2+53.27	STA. 37+00	STA. 79+23.47
STA. 4+19.94	STA. 42+00	STA. 85+15.74
STA. 5+38.38	STA. 47+00	STA. 87+49.07 Bk. +
STA. 7+05.05	STA. 52+00	87+49.89 Ah.
STA. 11+75.77	STA. 57+00	STA. 92+50
STA. 14+42.44	STA. 61+42.72	STA. 97+50
STA. 15+14.06	STA. 63+76.05	STA. 102+50
STA. 17+80.73 Bk. =	STA. 67+00	STA. 107+73.82
17+81.44 Ah.	STA. 70+99.11	STA. 110+07.15
STA. 22+00	STA. 73+32.44 Bk. =	STA. 112+57.14
STA. 27+00	73+33.13 Ah.	STA. 114+90.47 Bk. =
STA. 32+00	STA. 76+90.14	114+90.46 Ah.
		STA. 119+50

I HEREBY CERTIFY THAT THIS PLAT IS A TRUE DELINEATION OF A SURVEY MADE FOR THE OHIO DEPARTMENT OF HIGHWAYS IN 1962 BY ROBERT W. LOWRY CONSULTING ENGINEERS

APPROVED: *Harry P. Schimmel*  
 Registered Surveyor

REGISTRATION NO: 2182  
 DATE: April 5 1963