

61356

CENTER LINE SURVEY PLAT

NEW LEXINGTON - ATHENS ROAD

STATE ROUTE 13 SEC. (0.00 - 6.03)

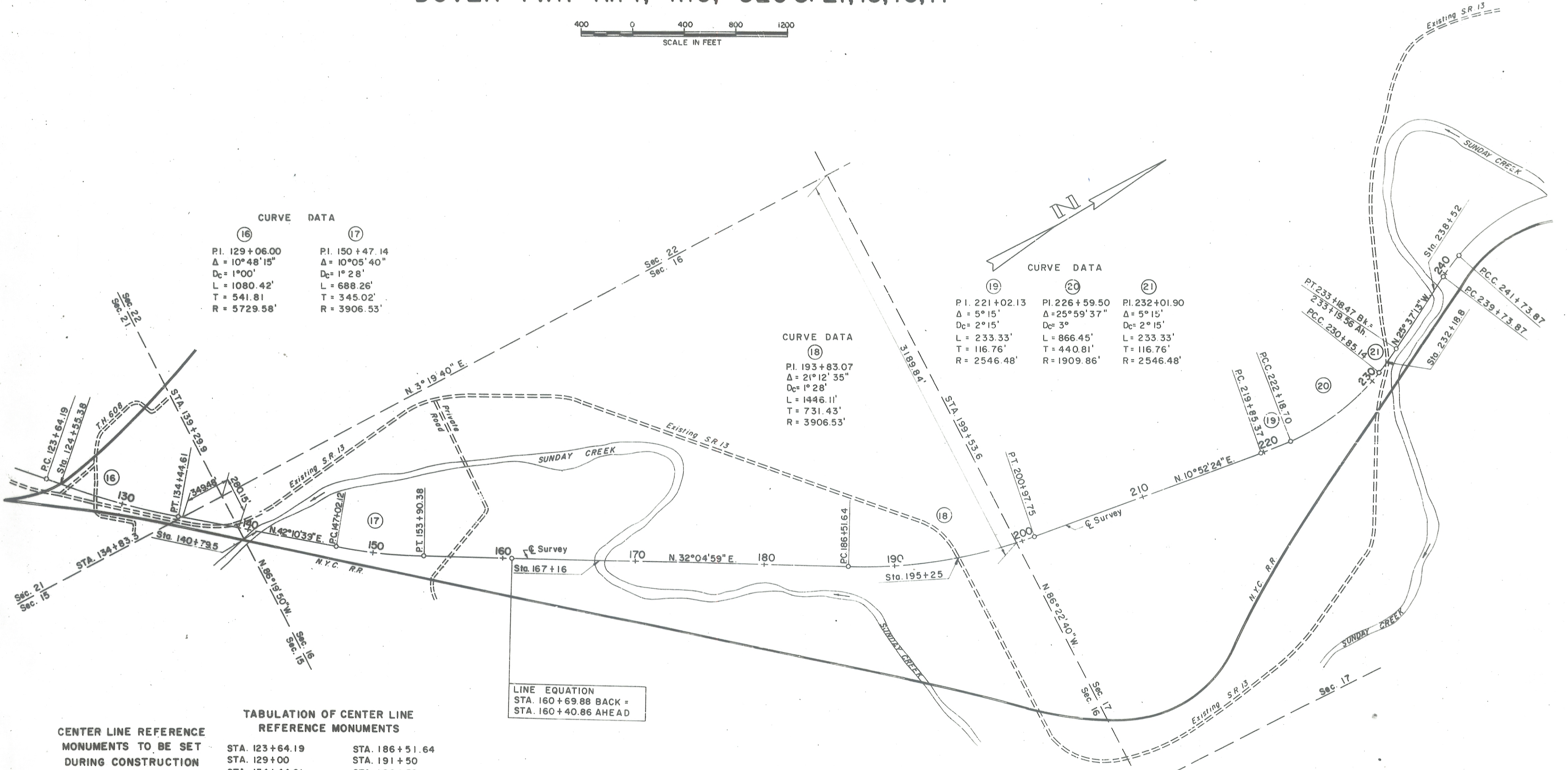
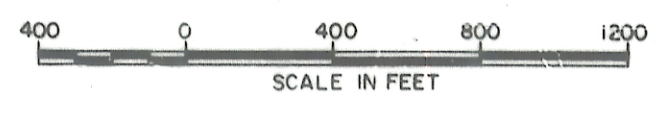
ATHENS COUNTY, OHIO

DOVER TWP. R.14, T.10, SEC'S. 21,15,16,17

Received May 13 1963
 Recorded May 13 1963
 Book 8 Page 53
Claudio P. Chappell
 County Recorder
 By J.E.

CENTER LINE PLAT
 SEC. 110
 ATH. 13 (0.00 - 6.03)
 LIMITED ACCESS

THIS IMPROVEMENT HAS BEEN DECLARED A LIMITED ACCESS HIGHWAY FROM STATION 0+00 TO STATION 318+67.25 BY ACTION OF THE DIRECTOR OF HIGHWAYS AND RECORDED IN VOLUME , PAGE , OF THE DIRECTOR'S JOURNAL PURSUANT TO LAW.



CURVE DATA

(16)	(17)
PI. 129+06.00	PI. 150+47.14
Δ = 10°48'15"	Δ = 10°05'40"
Dc = 1°00'	Dc = 1°28'
L = 1080.42'	L = 688.26'
T = 541.81	T = 345.02'
R = 5729.58'	R = 3906.53'

CURVE DATA

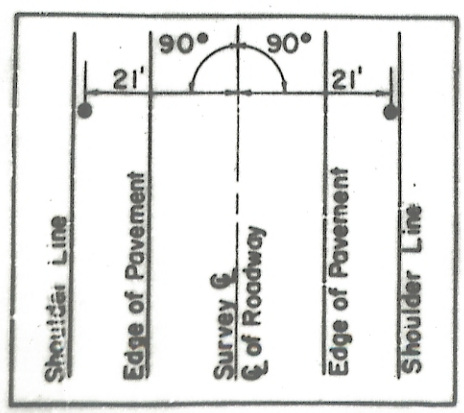
(19)	(20)	(21)
PI. 221+02.13	PI. 226+59.50	PI. 232+01.90
Δ = 5°15'	Δ = 25°59'37"	Δ = 5°15'
Dc = 2°15'	Dc = 3°	Dc = 2°15'
L = 233.33'	L = 866.45'	L = 233.33'
T = 116.76'	T = 440.81'	T = 116.76'
R = 2546.48'	R = 1909.86'	R = 2546.48'

CURVE DATA

(18)
PI. 193+83.07
Δ = 21°12'35"
Dc = 1°28'
L = 1446.11'
T = 731.43'
R = 3906.53'

LINE EQUATION
 STA. 160+69.88 BACK =
 STA. 160+40.86 AHEAD

CENTER LINE REFERENCE MONUMENTS TO BE SET DURING CONSTRUCTION



TABULATION OF CENTER LINE REFERENCE MONUMENTS

STA. 123+64.19	STA. 186+51.64
STA. 129+00	STA. 191+50
STA. 134+44.61	STA. 196+50
STA. 138+50	STA. 200+97.75
STA. 143+50	STA. 205+00
STA. 147+02.12	STA. 210+00
STA. 153+90.38	STA. 215+00
STA. 158+00	STA. 219+85.37
STA. 163+00	STA. 222+18.70
STA. 168+00	STA. 226+50
STA. 173+00	STA. 230+85.14
STA. 178+00	STA. 233+18.47 Bk. =
STA. 183+00	233+19.56 Ah.
	STA. 237+50

ENVELOPE: 370A
 CENTERLINE SURVEY
 ATH-13-0.00-6.03
 NEW LEXINGTON-ATHENS ROAD
 STATE ROUTE 13
 DOVER TWP
 CON'T FROM 369B

I HEREBY CERTIFY THAT THIS PLAT IS A TRUE DELINEATION OF A SURVEY MADE FOR THE OHIO DEPARTMENT OF HIGHWAYS IN 1962 BY ROBERT W. LOWRY CONSULTING ENGINEERS.
 APPROVED: Harry C. Lammell
 Registered Surveyor
 REGISTRATION NO: 1123
 DATE: April 5-1963