

CENTER LINE SURVEY PLAT

NEW LEXINGTON - ATHENS ROAD

STATE ROUTE 13 SEC. (0.00 - 6.03)

ATHENS COUNTY, OHIO

DOVER TWP. R.14, T.10, SEC'S. 17,18

TRIMBLE TWP. R.14, T.11, SEC. 13

Received May 13 1963
 Recorded May 13 1963
 Book 8 Page 55
Claudio E. Chappel
 County Recorder

CENTER LINE PLAT

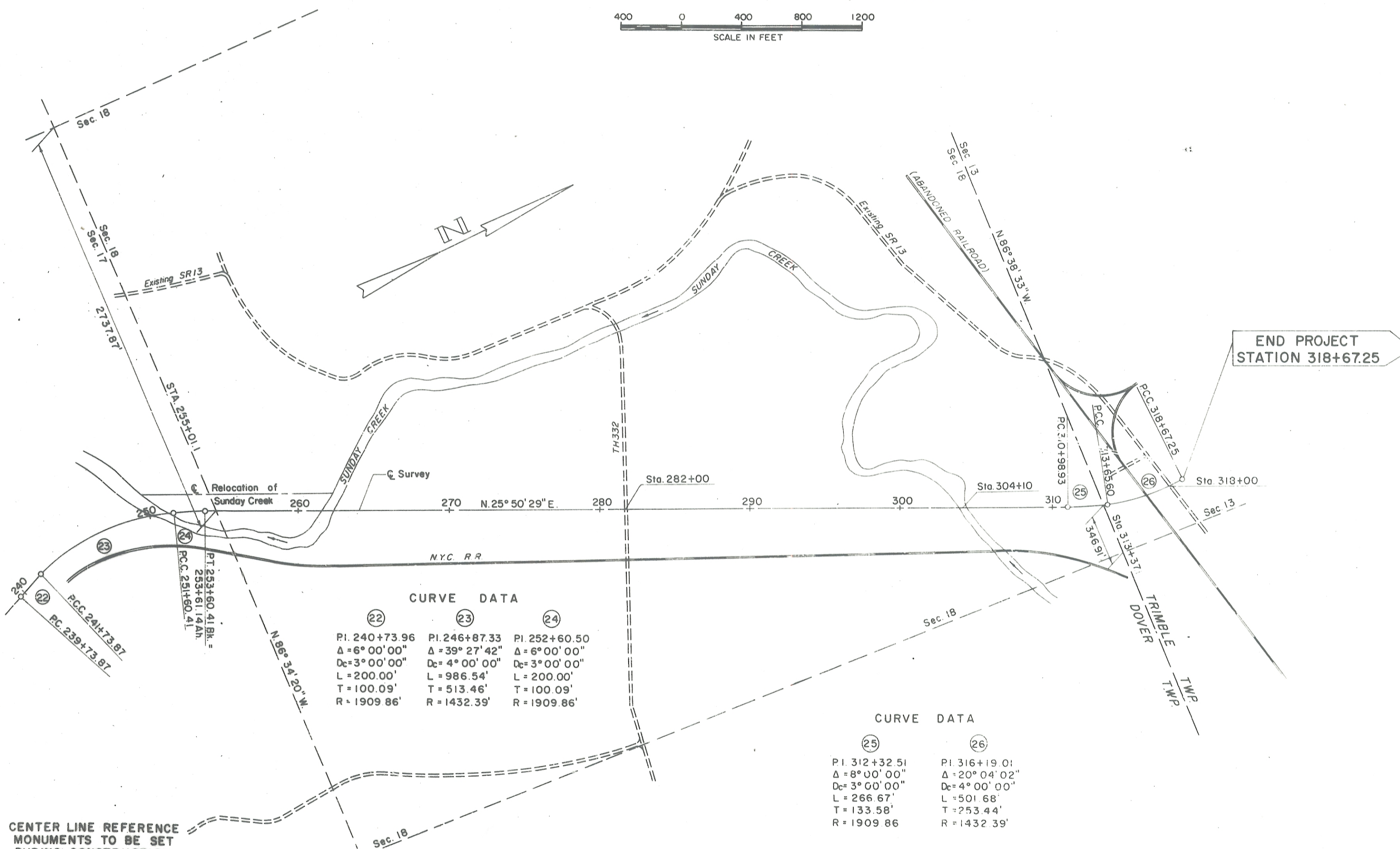
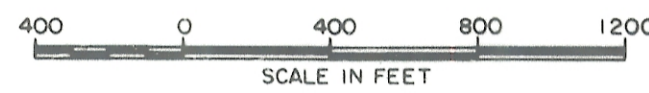
SEC. 1.10

ATH. 13 (0.00 - 6.03)

LIMITED ACCESS

3
3

THIS IMPROVEMENT HAS BEEN DECLARED
 A LIMITED ACCESS HIGHWAY FROM STATION
 0+00 TO STATION 318+67.25 BY ACTION OF
 THE DIRECTOR OF HIGHWAYS AND RECORDED
 IN VOLUME , PAGE , OF THE DIRECTOR'S
 JOURNAL PURSUANT TO LAW.



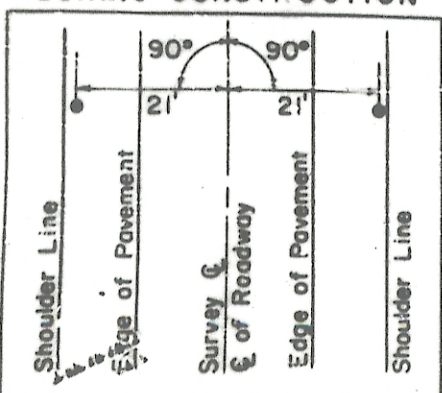
CURVE DATA

PI. 240+73.96 Δ = 6° 00' 00" Dc = 3° 00' 00" L = 200.00' T = 100.09' R = 1909.86'	PI. 246+87.33 Δ = 39° 27' 42" Dc = 4° 00' 00" L = 986.54' T = 513.46' R = 1432.39'	PI. 252+60.50 Δ = 6° 00' 00" Dc = 3° 00' 00" L = 200.00' T = 100.09' R = 1909.86'
--	---	--

CURVE DATA

PI. 312+32.51 Δ = 8° 00' 00" Dc = 3° 00' 00" L = 266.67' T = 133.58' R = 1909.86'	PI. 316+19.01 Δ = 20° 04' 02" Dc = 4° 00' 00" L = 501.68' T = 253.44' R = 1432.39'
--	---

CENTER LINE REFERENCE MONUMENTS TO BE SET DURING CONSTRUCTION



TABULATION OF CENTER LINE REFERENCE MONUMENTS

STA. 239+73.87	STA. 268+00	STA. 303+00
STA. 241+73.87	STA. 273+00	STA. 308+00
STA. 246+65	STA. 278+00	STA. 310+98.93
STA. 251+60.41	STA. 283+00	STA. 313+65.60
STA. 253+60.41Bk =	STA. 288+00	STA. 318+67.25
253+61.14Ah	STA. 293+00	
STA. 258+00	STA. 298+00	
STA. 263+00		

ENVELOPE: 370B

CENTERLINE SURVEY -
 ATH-13-0.00-6.03
 NEW LEXINGTON-ATHENS ROAD
 STATE ROUTE 13
 DOVER TWP

I HEREBY CERTIFY THAT THIS PLAT IS A TRUE DELINEATION OF A SURVEY MADE FOR THE OHIO DEPARTMENT OF HIGHWAYS IN 1962 BY ROBERT W. LOWRY CONSULTING ENGINEERS.

APPROVED: *Harold C. Lehmann*
 Registered Surveyor
 REGISTRATION NO: 1183
 DATE: April 15, 1963