

CENTER LINE SURVEY PLAT

ATH-33-12.96

ATHENS TOWNSHIP

LEASE (FARM) LOT NO'S. 24,26,27,30,47,209 & 210 OHIO COMPANY PURCHASE, UNIVERSITY LANDS

ATHENS COUNTY, OHIO

85209
 Received Dec 17 1968
 Recorded Dec 17 1968
 Book 9 Page 27
 Salem Wright
 County Recorder

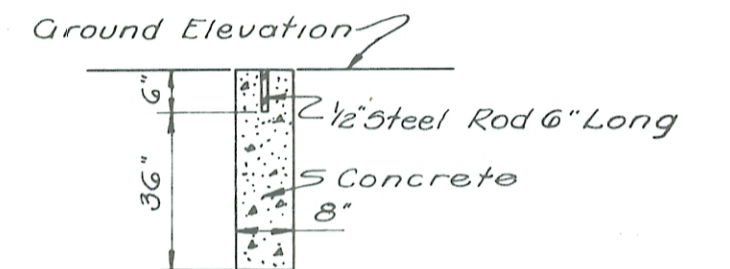
FED. RD. DIVISION	STATE	PROJECT
2	OHIO	

ATHENS COUNTY
ATH-33-12.96
LIMITED ACCESS

NOTES:
 This Plat includes and supersedes part of sheet 1 of the Location Plan for ATH-33-10.26 and recorded in Plat Book 7, Page 327 of the Athens County Plat Records.

* Reference Monuments and Monument Assemblies to be placed during or following construction.

For details of monument assembly section see standard construction drawing N^o MC-1, State of Ohio Standard drawings dated October 1, 1967



REFERENCE MONUMENT SECTION

* REFERENCE MONUMENTS U.S. 33
 * MONUMENT ASSEMBLY & T.R. 213-C.R. 20 RELOC.

P.O.C.	775+00
P.O.C.	783+00
P.O.C.	791+00
P.O.C.	799+00
C.S.	806+98.05
S.T.	808+48.05
P.O.T.	816+00
P.O.T.	824+00

P.O.C.	71+00
P.O.C.	75+52.22
P.O.C.	81+00
P.T.	87+34.45

* MONUMENT ASSEMBLY STATE ST.

P.O.T.	30+00
P.C.	35+78.35
P.T.	41+45.18
P.C.	45+12.02

* REFERENCE MONUMENTS RAMP "D"

P.C.	801+11.00
P.T.	804+60.09
P.O.T.	812+00
P.O.T.	819+00

* MONUMENT ASSEMBLY SERVICE ROAD "E-E"

P.C.	10+64.58
P.T.	12+56.84
P.O.T.	17+00.00

SERVICE ROAD "E-E" CURVE DATA

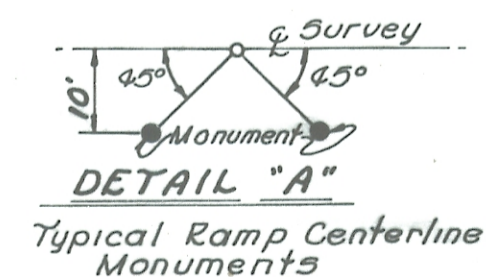
P.I. 11+60.79
 Δ = 5°46'04" Rt.
 D = 3°00'
 R = 1909.86'
 L = 192.26'
 T = 96.21'
 E = 2.42'

THIS IMPROVEMENT HAS BEEN DECLARED A LIMITED ACCESS HIGHWAY FROM STATION 683+87.48 TO STATION 825+00.00, BY ACTION OF THE DIRECTOR OF HIGHWAYS AND RECORDED IN VOLUME 32, PAGE 402 OF THE DIRECTOR'S JOURNAL PURSUANT TO LAW

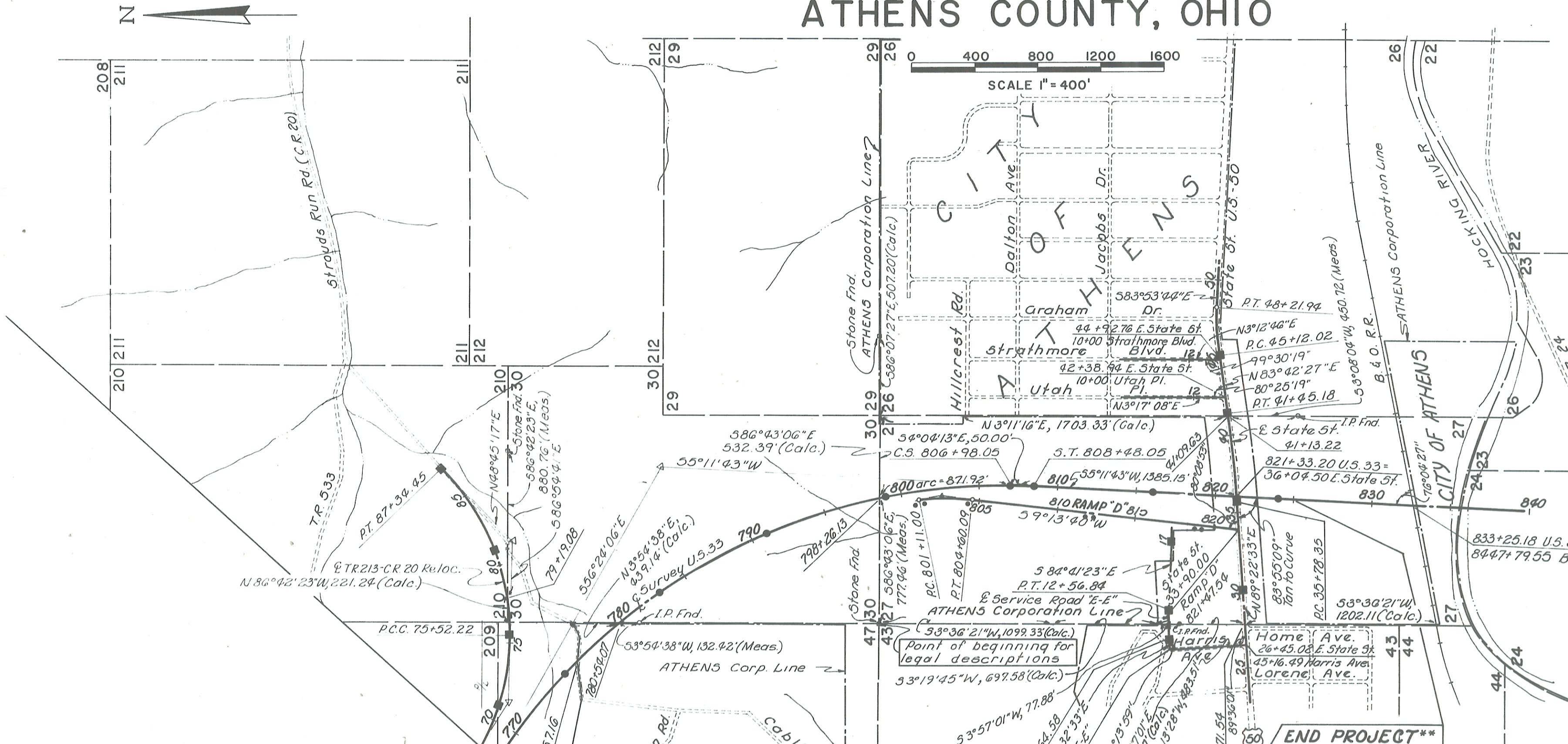
** Begin Project ATH-33-15.62 (ATH-33-15.62 Right of Way to be Acquired with ATH-33-12.96)

•• See Detail "A"

- Monument Assembly Symbol
- Monument Symbol



I HEREBY CERTIFY THAT THIS PLAT IS A TRUE DELINEATION OF A SURVEY MADE FOR THE OHIO DEPARTMENT OF HIGHWAYS IN 1968 BY Columbus Engineering Consultants, Ltd. (successors to Atkins, Mercer, Underwood Ltd.)
 DATE 2-12-68
 Registered Surveyor No. 5118



U.S. 33 CURVE DATA	T.R. 213-C.R. 20 RELOC. CURVE DATA	RAMP "D" CURVE DATA	E. STATE ST. CURVE DATA
P.I. 789+43.61 Δ = 61°35'49" Rt. D = 1°30' R = 3819.72' Lc = 3956.46' Ts = 2352.02' Es = 627.41' Ls = 150.00' Os = 1°07'30"	P.I. 71+18.73 Δ = 35°29'58" Lt. D = 3°45' R = 1527.89' T = 459.83' L = 893.32' E = 67.70'	P.I. 81+74.71 Δ = 44°20'02" Lt. D = 3°45' R = 1627.89' T = 622.49' L = 1182.24' E = 121.94'	P.I. 38+62.00 Δ = 5°40'06" Lt. D = 1°00' R = 5729.58' L = 566.83' T = 283.65' E = 7.02'
P.I. 81+74.71 Δ = 44°20'02" Lt. D = 3°45' R = 1627.89' T = 622.49' L = 1182.24' E = 121.94'	P.I. 81+74.71 Δ = 44°20'02" Lt. D = 3°45' R = 1627.89' T = 622.49' L = 1182.24' E = 121.94'	P.I. 46+67.59 Δ = 12°23'49" Rt. D = 4°00' R = 1432.39' L = 349.09' T = 175.91' E = 10.70'	P.I. 46+67.59 Δ = 12°23'49" Rt. D = 4°00' R = 1432.39' L = 309.92' T = 155.57' E = 8.42'