

# CENTER LINE SURVEY PLAT

## ATH-33-12.96

### ATHENS TOWNSHIP

# LEASE (FARM) LOT NO'S. 47, 48, 49, 50, 51, 68, 69, 205 & 209 OHIO COMPANY PURCHASE, UNIVERSITY LANDS ATHENS COUNTY, OHIO

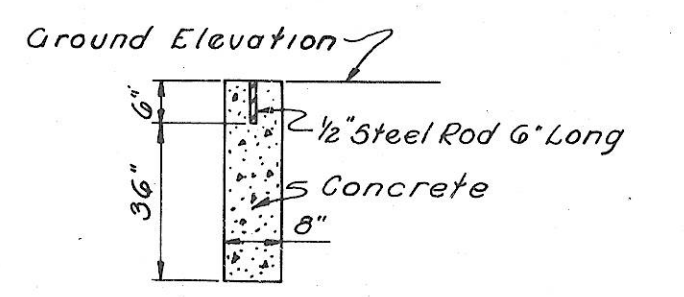
65208  
 Received Jan. 17 1968  
 Recorded Dec. 17 1968  
 Book 9 Page 26  
 G. W. Wright  
 County Recorder 5.42

FED. RD. DIVISION	STATE	PROJECT
2	OHIO	

ATHENS COUNTY  
 ATH-33-12.96  
 LIMITED ACCESS

\* Reference Monuments and Monument Assemblies to be placed during or following construction.

NOTE: For details of monument assembly section see standard construction drawing N<sup>o</sup> MC-1, State of Ohio Standard Drawings dated October 1, 1967



### REFERENCE MONUMENT SECTION

**RAMP "B" CURVE DATA**

PI: 700+48.06	PI: 707+04.17	PI: 712+29.70
A = 21°46'05" Rt.	A = 25°13'13" Lt.	A = 6°22'12" Lt.
D = 6°00'	D = 6°00'	D = 1°00'
R = 716.20'	R = 954.93'	R = 5729.58'
L = 272.10'	L = 420.33'	L = 637.00'
T = 137.71'	T = 213.63'	T = 318.83'
E = 13.12'	E = 23.60'	E = 8.86'

**RAMP "D" CURVE DATA**

PI: 691+15.97	PI: 694+31.69	PI: 698+91.22	PI: 701+84.01
A = 14°49'29" Rt.	A = 20°48'00" Rt.	A = 16°30'00" Lt.	A = 66°16'43" Lt.
D = 4°00'	D = 8°00'	D = 16°30'	D = 16°30'
R = 1432.39'	R = 716.20'	R = 347.25'	R = 347.25'
L = 370.62'	L = 260.01'	L = 200.00'	L = 401.69'
T = 186.35'	T = 131.45'	T = 163.30'	T = 226.71'
E = 12.07'	E = 11.96'	E = 133.92'	E = 67.45'

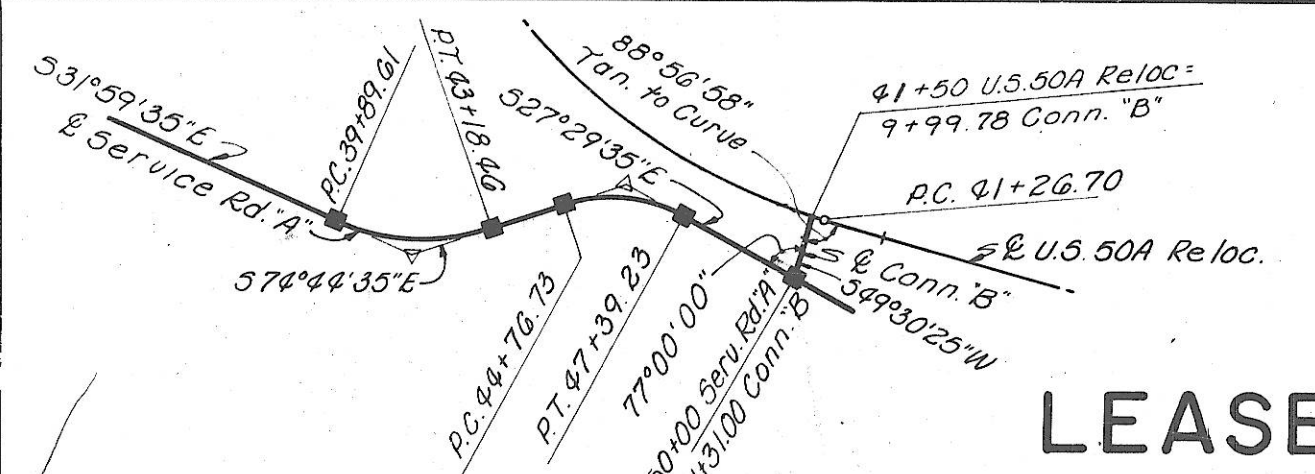
**S.R.13 RELOCATION CURVE DATA**

PI: 46+86.31	PI: 55+79.98
A = 53°04'06" Lt.	A = 25°09'26" Lt.
D = 10°00'	D = 6°00'
R = 572.96'	R = 954.93'
L = 405.68'	L = 344.29'
T = 291.77'	T = 215.39'
Ts = 407.49'	Ts = 285.95'
Ls = 250.00'	Ls = 150.00'
Os = 12°30'00"	Os = 4°30'00"

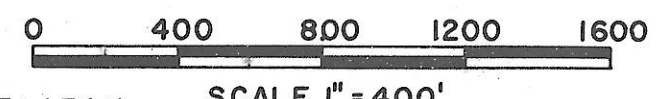
**T.R.213-C.R.20 RELOC. CURVE DATA**

PI: 55+10.94	PI: 71+18.73	PI: 11+19.46	PI: 16+62.19
A = 19°03'43" Lt.	A = 33°29'58" Lt.	A = 34°31'17" Lt.	A = 33°49'58" Rt.
D = 3°45'	D = 10°00'	D = 10°00'	D = 10°00'
R = 1432.39'	R = 1527.89'	R = 572.96'	R = 572.96'
T = 240.50'	T = 459.83'	T = 178.02'	T = 174.26'
L = 476.55'	L = 893.32'	L = 345.21'	L = 338.33'
E = 20.05'	E = 67.70'	E = 27.02'	E = 25.91'

I HEREBY CERTIFY THAT THIS PLAT IS A TRUE DELINEATION OF A SURVEY MADE FOR THE OHIO DEPARTMENT OF HIGHWAYS IN 1968 BY Columbus Engineering Consultants, Ltd. (successors to Atkins, Mercer, Underwood Ltd.)  
 G. W. Wright DATE \_\_\_\_\_  
 Registered Surveyor No. 5118



THIS IMPROVEMENT HAS BEEN DECLARED A LIMITED ACCESS HIGHWAY FROM STATION 683+87.48 TO STATION 825+00.00, BY ACTION OF THE DIRECTOR OF HIGHWAYS AND RECORDED IN VOLUME 52, PAGE 402 OF THE DIRECTOR'S JOURNAL PURSUANT TO LAW



NOTE: This Plat includes and supersedes part of sheet 1 of the Location Plan for ATH-33-10.26 and recorded in Plat Book 7, Page 327 of the Athens County Plat Records.

### \* MONUMENT ASSEMBLY SERVICE ROAD "A"

P.C.	39+89.01
P.T.	43+13.46
P.C.	44+76.73
P.T.	47+39.23
P.O.T.	50+00

### \* REFERENCE MONUMENTS U.S.33

P.O.T.	684+50
P.O.T.	692+00
P.O.T.	699+00
P.O.T.	707+00
P.O.T.	715+00
P.O.T.	723+00
P.O.T.	730+00
P.O.T.	738+00
P.O.T.	745+00
P.O.T.	752+00
P.O.T.	758+00
T.S.	765+91.59
S.C.	767+41.59

### \* REFERENCE MONUMENTS U.S.50A RELOC.

P.O.C.	45+50
P.O.C.	54+00

### \* MONUMENT ASSEMBLY U.S.50A RELOC.

P.O.T.	36+00
P.C.	41+26.70
P.T.	51+14.25
P.O.T.	67+00
P.O.T.	73+00

### \* MONUMENT ASSEMBLY RAMP "B"

P.C.	699+10.35
------	-----------

### \* REFERENCE MONUMENTS RAMP "B"

P.T.	701+82.45
P.C.	704+90.54
P.C.C.	709+10.87
P.T.	715+47.87

### \* MONUMENT ASSEMBLY S.R.13 RELOCATION

P.C.C.	43+94.54
C.S.	48+00.22
S.T.	50+50.22
T.S.	52+94.00
S.C.	54+44.00
P.T.	57+88.29

### \* REFERENCE MONUMENTS RAMP "D"

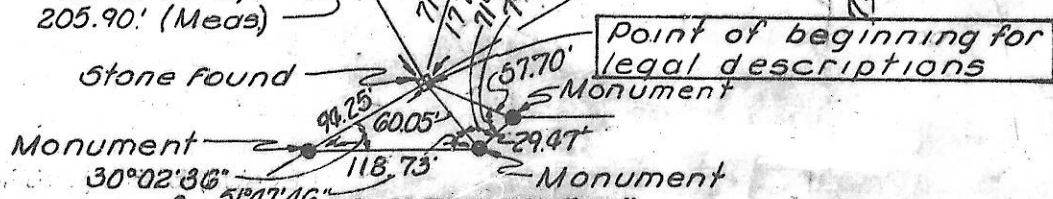
P.C.	689+29.62
P.C.C.	693+00.24
P.T.	695+60.25
T.S.	697+57.30
S.C.	699+57.30
P.T.	703+58.99

### SERVICE ROAD "A" CURVE DATA

PI: 41+62.11	PI: 46+15.96
A = 42°45'00" Lt.	A = 47°15'00" Rt.
D = 13°00'	D = 13°00'
R = 440.74'	R = 318.31'
L = 328.85'	L = 262.50'
T = 172.50'	T = 139.23'
E = 32.55'	E = 29.12'

BEGIN PROJECT STA. 683+87.48

### DETAIL "B" LEASE LOT CORNER REFERENCE MONUMENTS



- See Detail "A"
- Stone Found
- Monument Assembly Symbol
- Iron Pin Found
- Monument Symbol

DETAIL "A" Typical Ramp Centerline Monuments