

ENVELOPE: 404A
 CENTERLINE SURVEY
 ATH-50-2.46
 ALBANY VILLAGE

For record see Vol 9 P. 53

CENTER LINE SURVEY PLAT

U. S. ROUTE 50
 SEC. ATH-50-2.46
 ATHENS COUNTY, OHIO
 VILLAGE OF ALBANY
 LEE TWP. TION, R15 W
 SEC. 2, 3, 7 & 8

Received _____
 Recorded _____
 Book _____ Page _____
 County Recorder

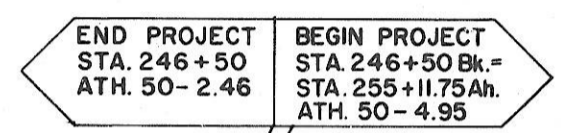
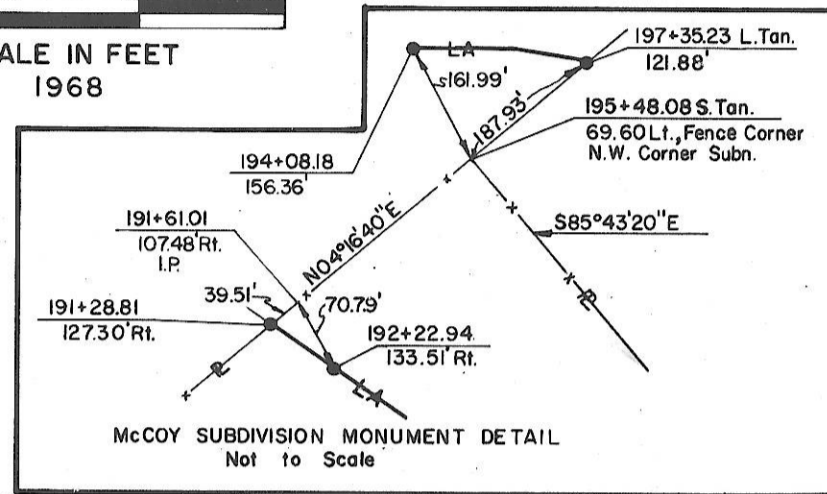
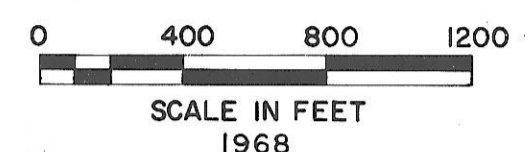
FED. RD. DIVISION	STATE	PROJECT	YEAR
2	OHIO	APD 1128 (19)	1968

ATH-50-2.46
 LIMITED ACCESS
 R/W APD 1128(4)



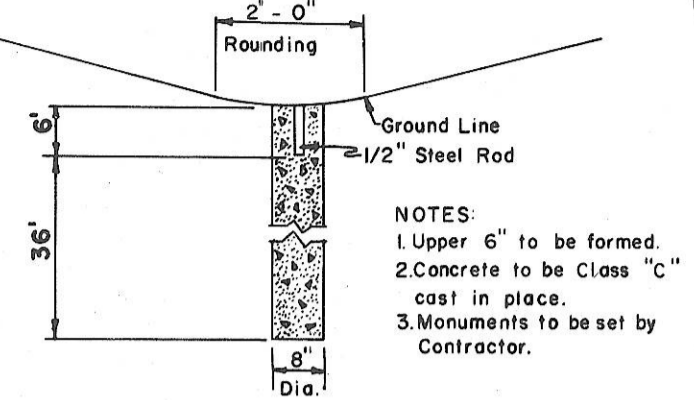
CENTERLINE REFERENCE MONUMENTS •
 CENTERLINE REFERENCE BOXES

RAMP "B" CURVE DATA		CENTERLINE REFERENCE MONUMENTS • CENTERLINE REFERENCE BOXES		
PI. STA. 231+81.02	PI. STA. 234+45.94	PO.T. 115+00 Exist.	PO.T. 165+00	PO.T. 205+00
Δ=12°01'53" Rt.	Δ=25°24'00" Lt.	PO.T. 120+00	PO.T. 170+00	PO.T. 210+00
Dc=12°00'	Dc=12°00'	PO.T. 125+00	PO.T. 175+00	PO.T. 215+00
R=477.46'	R=477.46'	PO.T. 132+00	T.S. 178+07.35	PO.T. 220+00
T=50.32'	T=107.60'	PC. 136+53.39	S.C. 181+57.35	PO.T. 225+00
L=100.26'	L=211.66'	PO.C. 140+50	PO.C. 182+00	PC. 230+63.25
PC. STA. =231+30.70	PC. STA. =233+38.34	PO.C. 145+00	PO.C. 187+77.20	PO.C. 232+76.53
PT. STA. =232+30.96	PT. STA. =235+50 Ramp "B"	PO.C. 150+00	C.S. 194+49.04	PO.C. 238+00
	235+50 Prop. U.S. 50 56" Lt.	PT. 155+19.62	ST. 197+99.04	PT. 244+60.31
		PO.T. 160+00	PO.T. 199+00	PO.T. 246+50



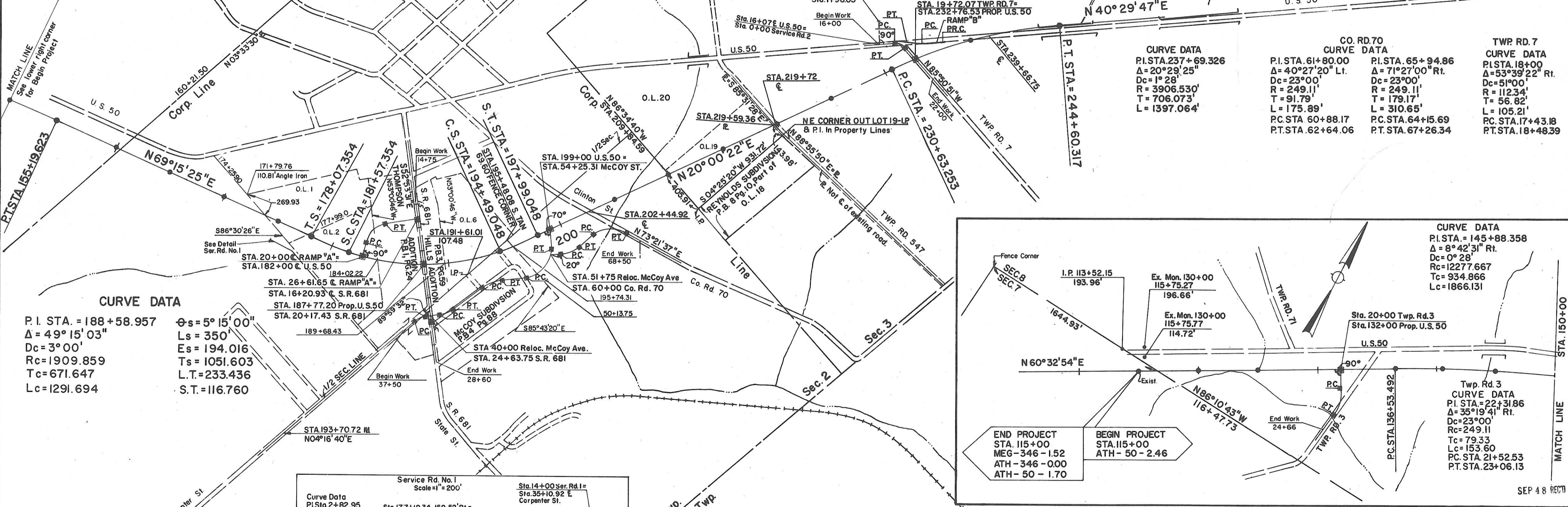
This Improvement Has Been Declared A Limited Access Highway From Station 115+00 To Station 246+50 By Action Of The Director Of Highways And Recorded In Volume 52 Page 1078 Of The Directors Journal Pursuant To Law.

Stations And Offsets Within The Limits Of Centerline Survey Spiral Are Referenced To Spiral Tangents.



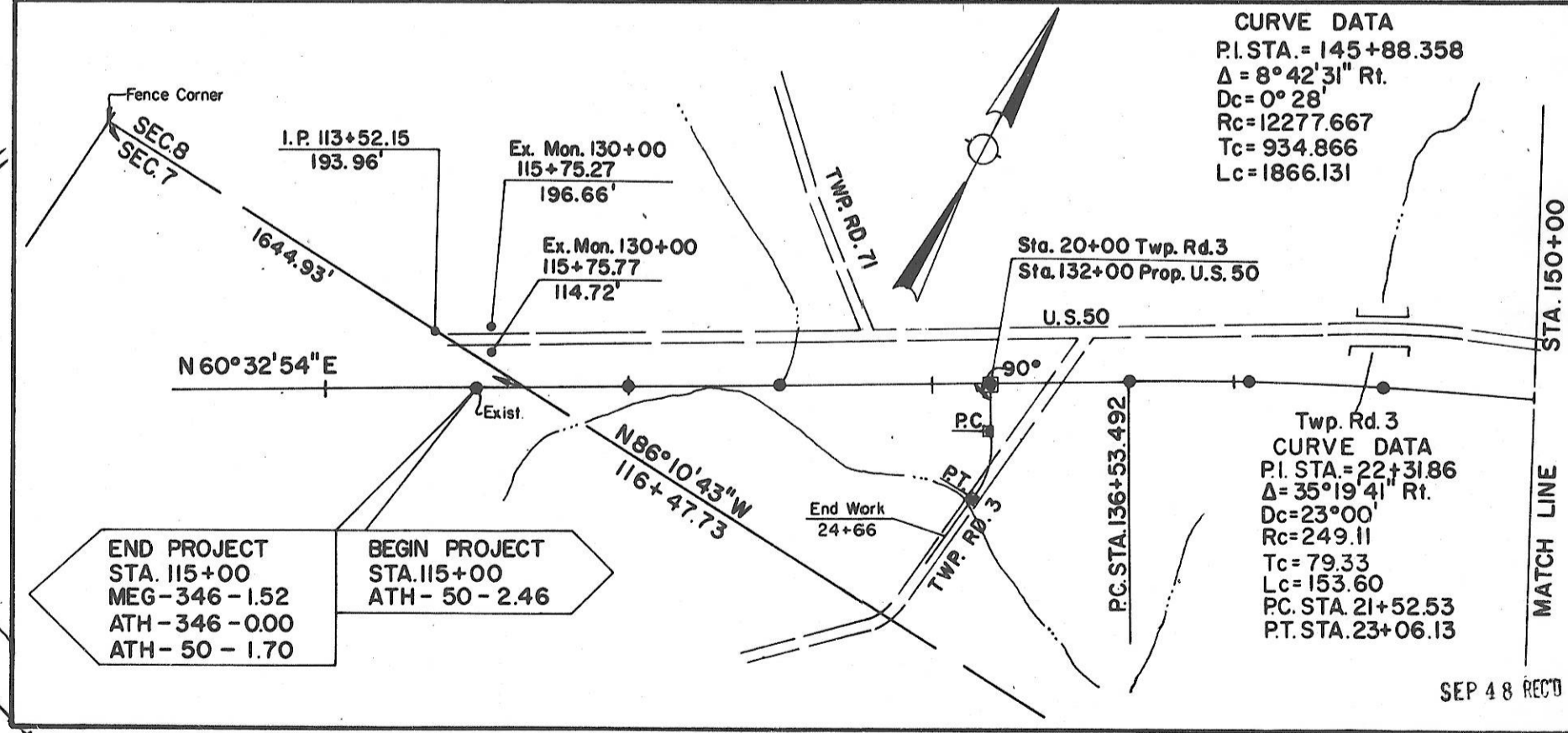
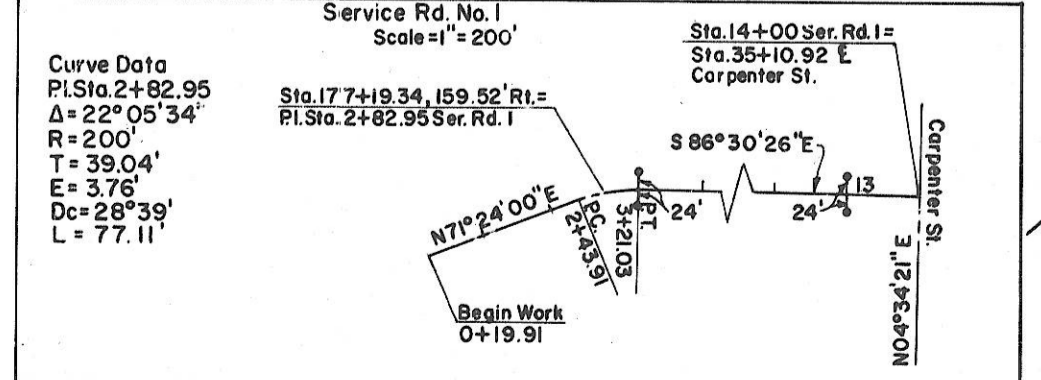
RAMP "A" CURVE DATA	RELOC. McCOY ST. CURVE DATA	REFERENCE MONUMENT SECTION
PI. STA. 22+53.75	PI. STA. 39+00.40	Std. Draw. MC-1, Rev. 10-1-67
Δ=64°21'20" Rt.	Δ=32°31'40" Rt.	
Dc=25°00'	Dc=38°11'50"	
R=229.18'	R=150'	
T=144.20'	T=43.76'	
L=257.42'	L=85.16'	
PC. STA. 21+09.55	PC. STA. 38+56.64	
PT. STA. 23+66.97	PT. STA. 39+41.80	

RELOC. McCOY ST. CURVE DATA	RELOC. McCOY ST. CURVE DATA
PI. STA. 46+07.35	PI. STA. 51+33.70
Δ=31°50'38" Rt.	Δ=90°00'00" Lt.
Dc=15°00'	Dc=25°00'
R=381.97'	R=229.18'
T=108.96'	T=229.18'
L=212.29'	L=360.00'
PC. STA. 44+98.39	PC. STA. 49+04.52
PT. STA. 47+10.68	PT. STA. 52+64.52



CURVE DATA

PI. STA. = 188+58.957	Δs = 5°15'00"
Δ = 49°15'03"	Ls = 350
Dc = 3°00'	Es = 194.016
Rc = 1909.859	Ts = 1051.603
Tc = 671.647	L.T. = 233.436
Lc = 1291.694	S.T. = 116.760



NOTE: O.L. Refers to Out Lots as shown in the Auditors Plat Book for Lee Twp.

ATHENS COUNTY, OHIO
 Received For _____
 at _____ M. on the _____ day of _____
 1968
 Date _____
 Surveyors No. 1632

I Herby Certify That This Plat Is A True Delineation Of A Survey Made For The Ohio Department Of Highways In 1967 By Franklin Engineering Assoc. Ltd.
 Date 8-16-68
 Surveyors No. 1632