

ENVELOPE: 417A

CENTERLINE SURVEY
COUNTY ROAD 91
STIMSON AVENUE

91478

CENTERLINE SURVEY PLAT

STIMSON AVENUE
ATHENS COUNTY, OHIO

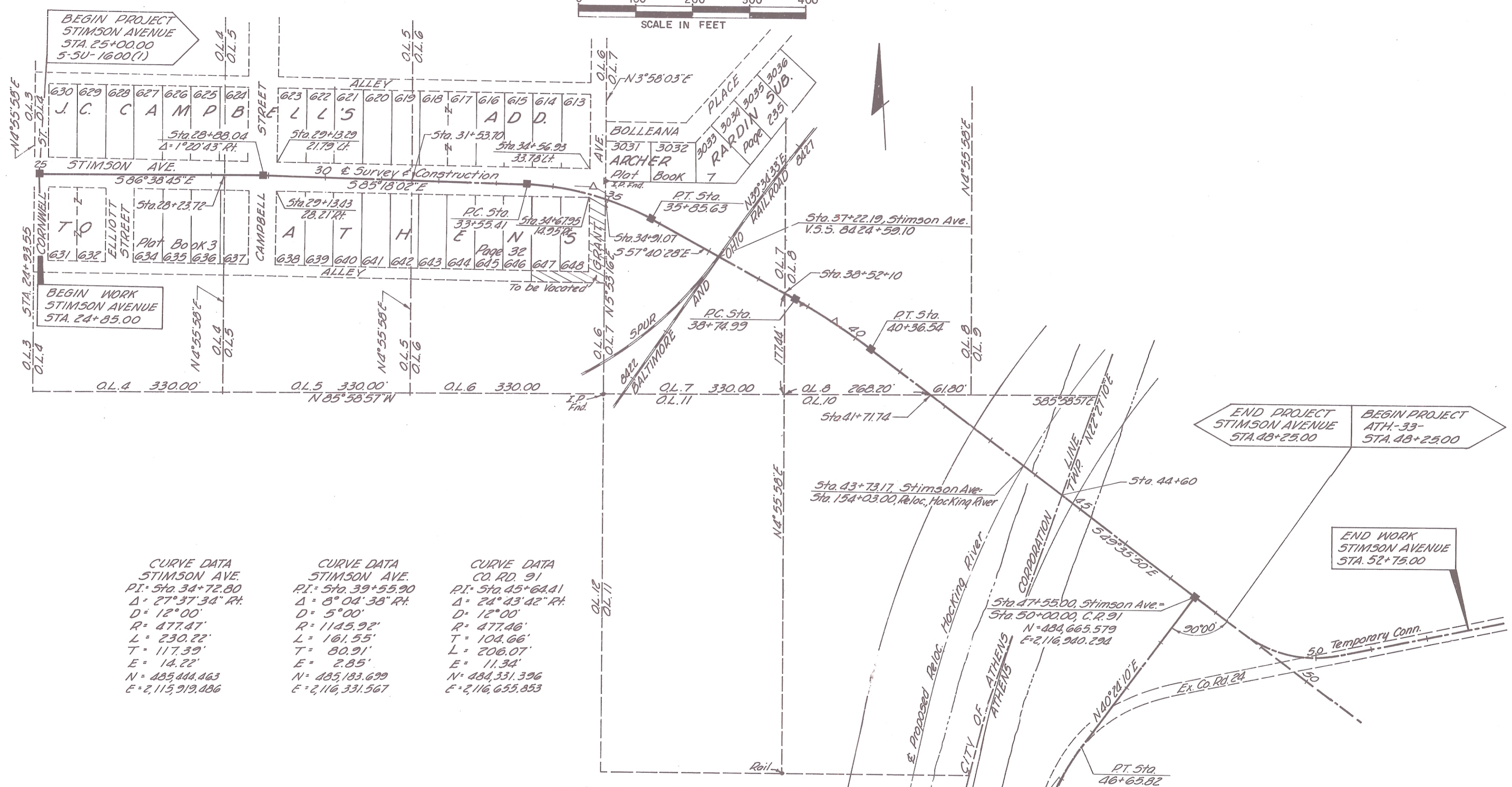
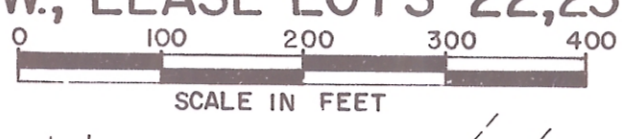
CITY OF ATHENS, T.9N., R.14W., O.L. 3, 4, 5, 6, 7, 8, 9 & 10, OHIO COMPANY LANDS
ATHENS TOWNSHIP T.9N., R.14W., LEASE LOTS 22, 23 & 24, OHIO COMPANY LANDS

FED. RD. DIVISION	STATE	PROJECT
2	OHIO	5-5U1579(1)

ATHENS COUNTY
STIMSON AVE.
COUNTY ROAD 91

68
77
1
10

Received May 11 1969
Recorded 7/1/69
Book 9 Page 45
County Recorder 15



CURVE DATA
STIMSON AVE.
PT. Sta. 34+72.80
Δ° 27° 37' 34" R.
D° 12° 00'
R° 477.47'
L° 230.22'
T° 117.39'
E° 14.22'
N° 485,444.463
E° 2,115,919.486

CURVE DATA
STIMSON AVE.
PT. Sta. 39+55.90
Δ° 5° 04' 38" R.
D° 5° 00'
R° 1145.92'
L° 161.55'
T° 80.91'
E° 2.85'
N° 485,183.639
E° 2,116,331.567

CURVE DATA
CO. RD. 91
PT. Sta. 45+64.41
Δ° 24° 43' 42" R.
D° 12° 00'
R° 477.46'
L° 104.66'
T° 206.07'
E° 11.34'
N° 484,331.396
E° 2,116,655.853

■ Monument Assemblies

MONUMENT ASSEMBLIES SHALL BE PLACED ON CENTERLINE AT THE FOLLOWING LOCATION DURING CONSTRUCTION

PT. Sta. 25+00.00	
PT. Sta. 28+88.04	
PC. Sta. 33+55.41	
PT. Sta. 35+85.63	
PC. Sta. 38+74.99	
PT. Sta. 40+36.54	
PT. Sta. 47+53.00	

NOTE:
See Standard Construction Drawing MC-1 for Monument Assembly Detail.

I hereby Certify that this Plat is a true Delineation of a Survey made for the Ohio Department of Highways in 1969 by Franklin Engineering Limited, Columbus, Ohio
Murray D. ... Date 7/2/69
Reg. Surveyor No. 763