

Received April 21 1970
 Recorded April 27 1970
 Book 9 Page 42
 State of Ohio
 Athens County Recorder

ENVELOPE: 415A
 CENTERLINE SURVEY -
 US ROUTE 50
 CANAAN TWP
 ATH-50-14.57

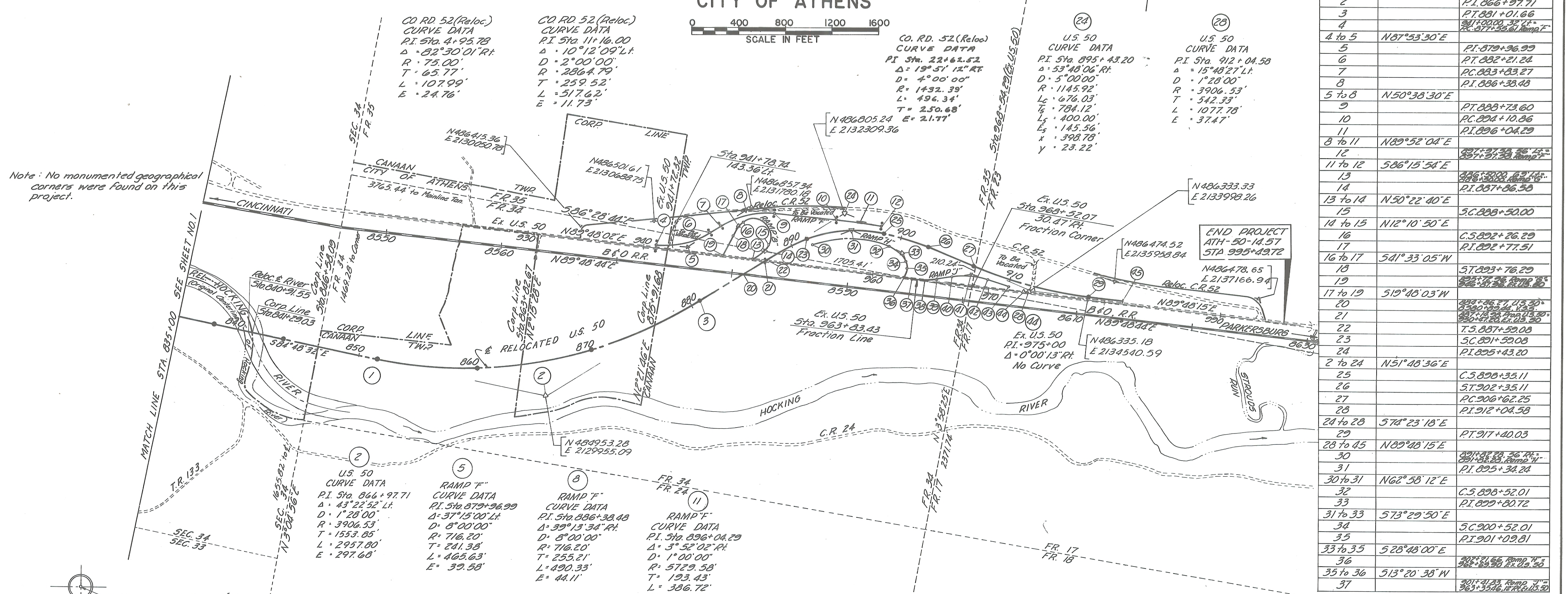
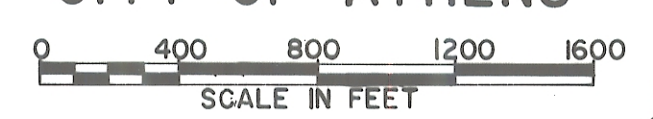
CENTERLINE SURVEY PLAT

U.S. ROUTE 50 SECTION 14.57
 ATHENS COUNTY, OHIO
 CANAAN TWP., SEC. 34, FR. 17, FR. 23, FR. 34 & FR. 35
 OHIO COMPANY LANDS
 CITY OF ATHENS

2 of 2

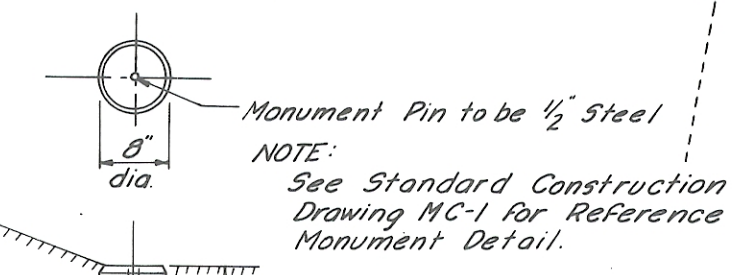
STATE JOB No	FED. RD. DIVISION	STATE	PROJECT
2	OHIO	APD 433(5)	

ATHENS COUNTY
 ATH-50-14.57
 LIMITED ACCESS
 APD-433(5) R/W ONLY
 R/W Acquired as 50/23/50-495/16.30/14.18



Note: No monumented geographical corners were found on this project.

Ref. No.	Bearing	Station
1		PC.851+43.86
1 to 2	S84°48'32"E	
2		PT.866+97.71
3		PT.881+01.66
4		PT.895+00.00
4 to 5	N87°53'30"E	
5		PT.879+96.99
6		PT.882+21.24
7		PC.883+83.27
8		PT.886+38.48
5 to 8	N50°38'30"E	
9		PT.889+73.60
10		PC.892+10.86
11		PT.896+04.29
8 to 11	N89°52'04"E	
12		PT.897+26.29
11 to 12	S86°15'54"E	
13		PT.898+77.51
14		PT.899+86.50
13 to 14	N50°22'40"E	
15		SC.898+50.00
14 to 15	N12°10'50"E	
16		C.S.892+26.29
17		PT.892+77.51
16 to 17	S41°33'05"W	
18		PT.893+76.29
19		PT.894+76.29
17 to 19	S19°48'03"W	
20		PT.895+76.29
21		PT.896+76.29
22		PT.897+76.29
23		SC.891+50.00
24		PT.895+43.20
2 to 24	N51°48'36"E	
25		C.S.898+33.11
26		PT.892+35.11
27		PC.896+62.25
28		PT.892+04.58
24 to 28	S74°23'18"E	
29		PT.897+40.03
28 to 29	N89°48'15"E	
30		PT.898+76.29
31		PT.895+34.24
30 to 31	N62°58'12"E	
32		C.S.898+52.01
33		PT.899+80.72
31 to 33	S73°29'50"E	
34		SC.900+52.01
35		PT.901+09.81
33 to 35	S28°48'00"E	
36		PT.902+09.81
35 to 36	S13°20'38"W	
37		PT.903+09.81



Ref. No.	Bearing	Station
38		PT.902+50.86
37 to 38	N89°48'02"E	
39		PT.903+58.62
40		PC.904+92.50
41		PT.906+43.66
38 to 41	N74°37'33"E	
42		PT.908+00.00
43		PT.909+01.66
41 to 43	S80°46'27"E	
44		PT.915+00.00
45		PT.916+00.00

CONCRETE REFERENCE MONUMENTS TO BE PLACED ON CENTERLINE AT THE FOLLOWING LOCATIONS DURING CONSTRUCTION OF (U.S.50)

PT. Sta. 838+00.00	PT. Sta. 917+40.03
PT. Sta. 844+00.00	Ramp "F"
PC. Sta. 851+43.86	PT. F-877+55.61, Ch. 9, R150'
PC. Sta. 860+00.00	PT. F-882+21.24, Ch. 4, R120'
PC. Sta. 870+00.00	PC. F-883+83.27, Ch. 4, R120'
PT. Sta. 881+01.66	PT. F-888+73.60, Ch. 4, R120'
PT. Sta. 895+00.00	PC. F-894+10.86, Ch. 4, R120'
SC. Sta. 891+59.03	PCC. F-897+97.53, Ch. 9, R142'
C.S. Sta. 898+33.11	
ST. Sta. 902+35.11	
PC. Sta. 906+62.25	

CO. RD. 52 (Reloc.)
 CURVE DATA
 PI. Sta. 51+53.89
 Δ = 11°40'00" L.
 D = 4°00'00"
 R = 1432.39'
 T = 146.34'
 L = 291.67'
 E = 7.46'

CO. RD. 52 (Reloc.)
 CURVE DATA
 PI. Sta. 64+70.99
 Δ = 70°00'00" R.
 R = 150.00'
 T = 105.03'
 L = 183.26'
 E = 33.12'

This improvement has been declared a Limited Access Highway from Station 766+78.99 to Station 995+43.72 by action of the Director of Highways on November 21, 1966 and Recorded in Volume 51, Page 1043 of the Director's Journal, Pursuant to Law.

I hereby certify that this Plat is a true delineation of a survey made for the Ohio Department of Highways in 1969 by Franklin Engineering Limited, Columbus, Ohio
 Date 4/14/69
 Reg. Sur. No. 673