

ENVELOPE: 415B

CENTERLINE SURVEY -
US ROUTE 50
CANAAN TWP
ATH-50-14.57

CENTERLINE SURVEY PLAT

U.S. ROUTE 50 SECTION 14.57

ATHENS COUNTY, OHIO

ATHENS TWP., R.14W., T.9N., LEASE LOTS 22 & 25

CANAAN TWP., R.13W., T.5N., SECTION 34

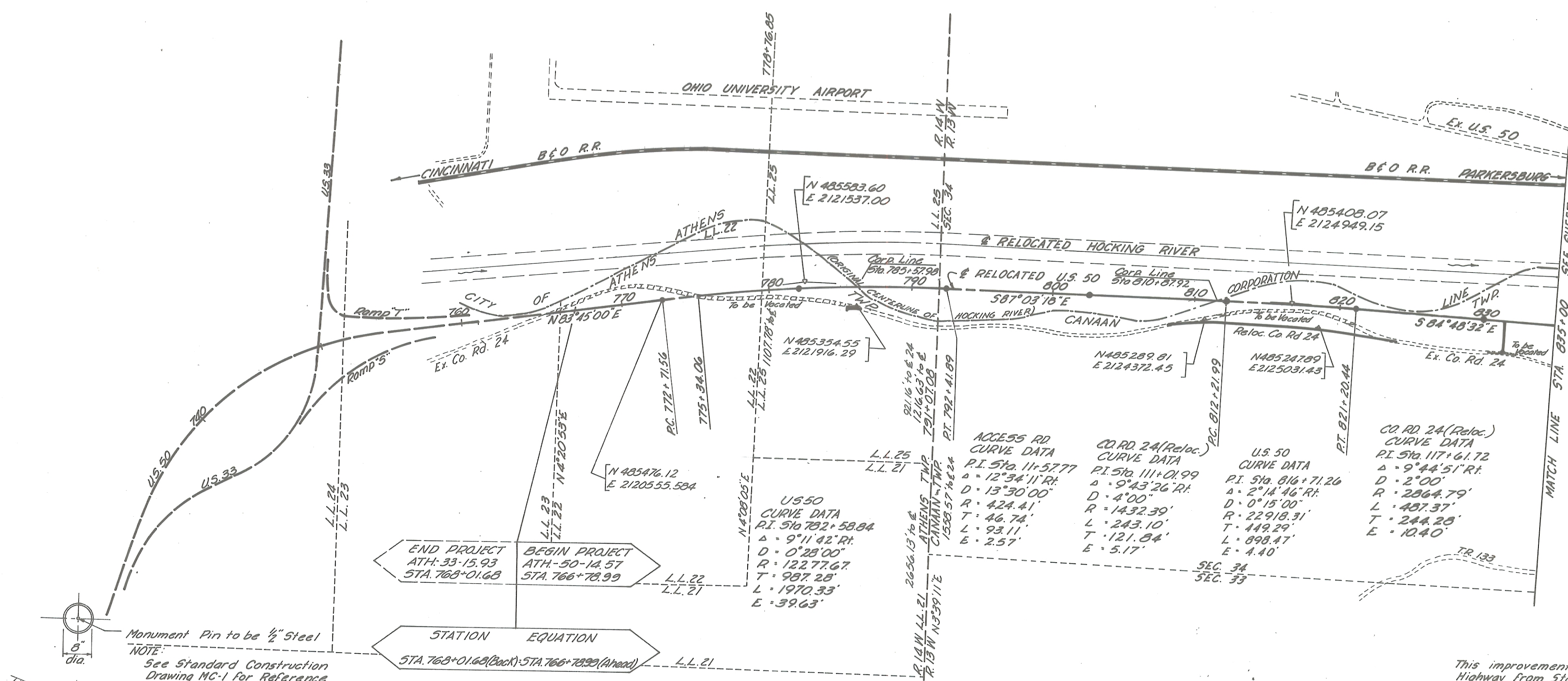
OHIO COMPANY LANDS

1 of 2

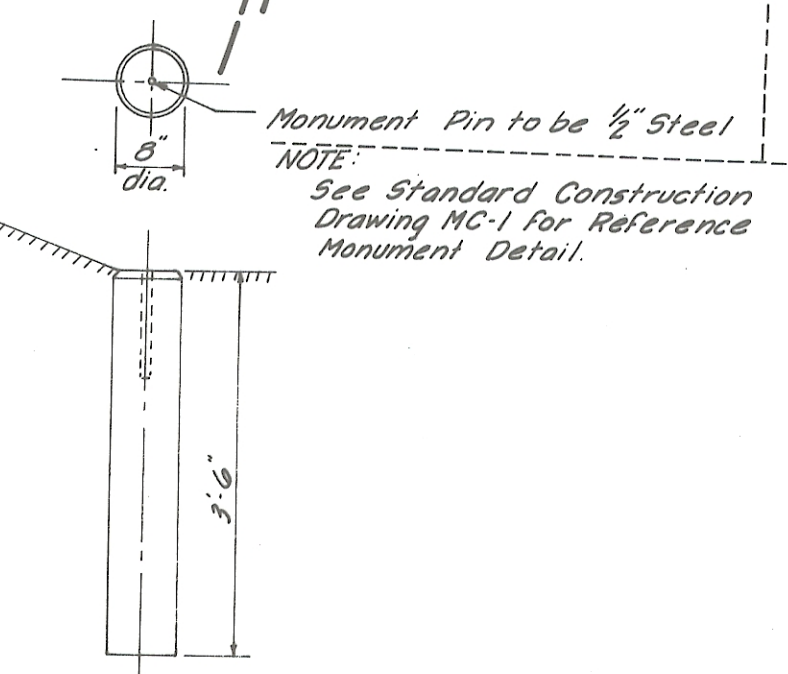
STATE JOB No.	FED. RD. DIVISION	STATE	PROJECT
2		OHIO	APD 433(5)

ATHENS COUNTY
ATH-50-14.57
LIMITED ACCESS
APD 433(5) R/W ONLY
R/W Acquired as Ath. 50/23/50-4.23/16.30/14.13

Received April 27 1970
Recorded April 27 1970
Book 9 Page 41
State of Ohio
County Recorder 1884



Note: No monumented geographical corners were found on this project.



CONCRETE REFERENCE MONUMENTS TO BE PLACED ON CENTERLINE AT FOLLOWING LOCATIONS DURING CONSTRUCTION OF (U.S. 50)

PC Sta. 772+71.56	
ROC Sta. 782+00.00	
PT Sta. 792+41.89	
POT Sta. 802+50.00	
PC Sta. 812+21.99	
PT Sta. 821+20.44	
POT Sta. 830+00.00	

This improvement has been declared a Limited Access Highway from Station 766+78.99 to Station 895+49.72 by action of the Director of Highways on November 21, 1966 and Recorded in Volume 51, Page 1043 of the Directors Journal, Pursuant to Law.

I hereby certify that this Plat is a true delineation of a survey made for the Ohio Department of Highways in 1969 by Franklin Engineering Limited, Columbus, Ohio
Franklin Engineering Limited Date 4/14/69
Reg. Sur. No. 623