

# CENTER LINE SURVEY PLAT

## U. S. ROUTE 50 SEC. ATH-50-2.46 ATHENS COUNTY, OHIO VILLAGE OF ALBANY LEE TWP. TION, R15W SEC. 2, 3, 7 & 8

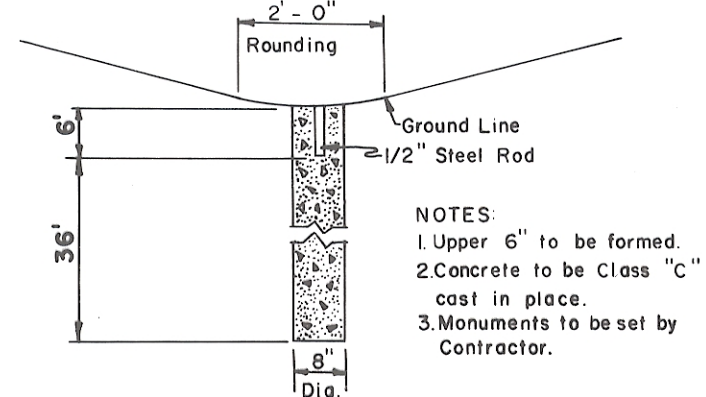
Re-record  
Received Dec. 17, 1970  
Recorded Dec. 17, 1970  
Book 9 Page 53  
Lute M. Wright  
County Recorder

FED. RD. DIVISION	STATE	PROJECT	YEAR
2	OHIO	APD 1128 (19)	1968

ATH-50-2.46  
LIMITED ACCESS  
R/W APD.1128(4)

This Improvement Has Been Declared A Limited Access Highway From Station 115+00 To Station 246+50 By Action Of The Director Of Highways And Recorded In Volume 52 Page 1078 Of The Directors Journal Pursant To Law.

Stations And Offsets Within The Limits Of Centerline Survey Spiral Are Referenced To Spiral Tangents.



NOTES  
1. Upper 6" to be formed.  
2. Concrete to be Class "C" cast in place.  
3. Monuments to be set by Contractor.

**RAMP "A" CURVE DATA**  
P.I. STA. 22+53.75  
Δ=64°21'20" Rt.  
Dc=25°00'  
R=229.18'  
T=144.20'  
L=257.42'  
P.C. STA. 21+09.55  
P.T. STA. 23+66.97

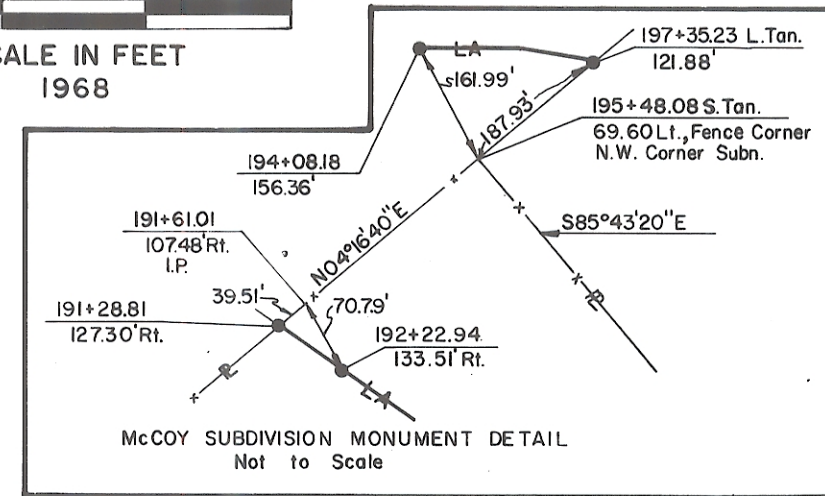
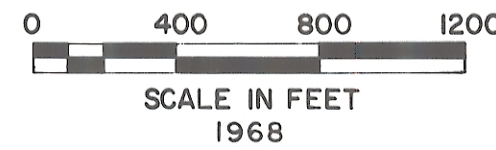
**RELOC. MCCOY ST. CURVE DATA**  
P.I. STA. 39+00.40  
Δ=32°31'40" Rt.  
Dc=38°11'50"  
R=150'  
T=43.76'  
L=85.16'  
P.C. STA. 38+56.64  
P.T. STA. 39+41.80

**RELOC. MCCOY ST. CURVE DATA**  
P.I. STA. 41+41.48  
Δ=28°56'17" Lt.  
Dc=29°00'  
R=197.57'  
T=50.98'  
L=99.76'  
P.C. STA. 40+90.50  
P.T. STA. 41+90.26

**RELOC. MCCOY ST. CURVE DATA**  
P.I. STA. 46+07.35  
Δ=31°50'35" Rt.  
Dc=15°00'  
R=381.97'  
T=108.96'  
L=212.29'  
P.C. STA. 44+98.39  
P.T. STA. 47+10.68

**RELOC. MCCOY ST. CURVE DATA**  
P.I. STA. 51+33.70  
Δ=90°00'00" Lt.  
Dc=25°00'  
R=229.18'  
T=229.18'  
L=360.00'  
P.C. STA. 49+04.52  
P.T. STA. 52+64.52

REFERENCE MONUMENT SECTION  
Std. Draw. MC-1, Rev. 10-1-67



**CURVE DATA**  
P.I. STA. = 188+58.957  
Δ=49°15'03"  
Dc=3°00'  
Rc=1909.859  
Tc=671.647  
Lc=1291.694

θs=5°15'00"  
Ls=350'  
Es=194.016  
Ts=1051.603  
L.T.=233.436  
S.T.=116.760

**RAMP "B" CURVE DATA**  
P.I. STA. 231+81.02  
Δ=12°01'53" Rt.  
Dc=12°00'  
R=477.46'  
T=50.32'  
L=100.26'  
P.C. STA.=231+30.70  
P.T. STA.=232+30.96

**RAMP "B" CURVE DATA**  
P.I. STA. 234+45.94  
Δ=25°24'00" Lt.  
Dc=12°00'  
R=477.46'  
T=107.60'  
L=211.66'  
P.C. STA.=233+38.34  
P.R.C.=235+50 Ramp "B"  
235+50 Prop. U.S.50 56'Lt

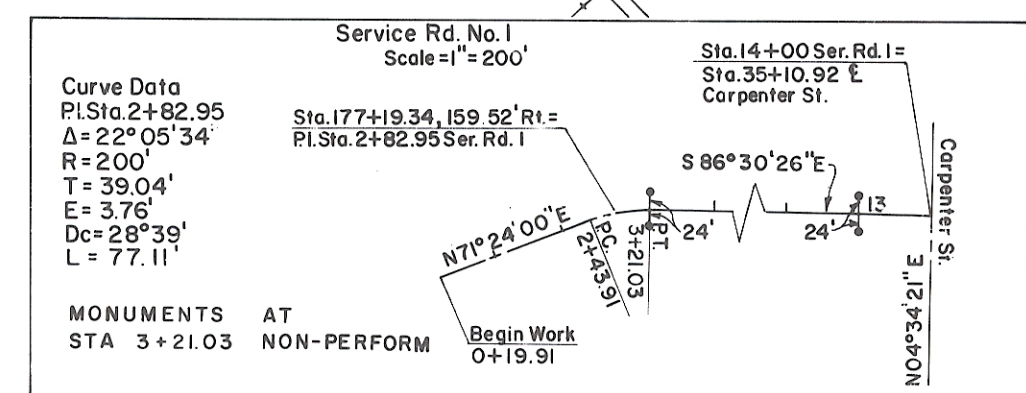
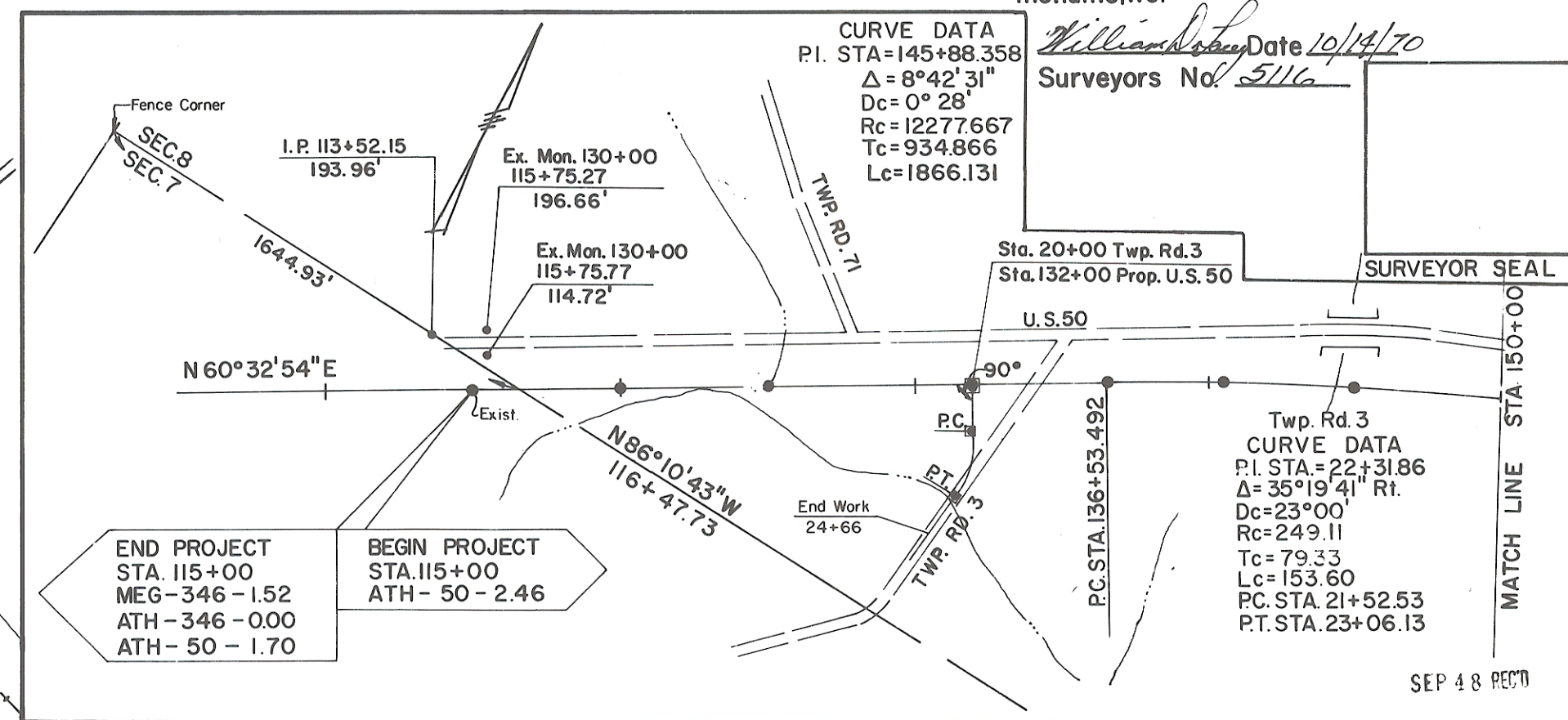
**CURVE DATA**  
P.I. STA. 237+69.326  
Δ=20°29'25"  
Dc=1°28'  
R=3906.530'  
T=706.073'  
L=1397.064'

**CO. RD.70 CURVE DATA**  
P.I. STA. 61+80.00  
Δ=40°27'20" Lt.  
Dc=23°00'  
R=249.11'  
T=179.17'  
L=175.89'  
P.C. STA. 60+88.17  
P.T. STA. 62+64.06

**TWP. RD.7 CURVE DATA**  
P.I. STA. 65+94.86  
Δ=71°27'00" Rt.  
Dc=23°00'  
R=249.11'  
T=179.17'  
L=175.89'  
P.C. STA. 64+15.69  
P.T. STA. 67+26.34

**NOTE:**  
The re-recording of this centerline Plat is for the purpose of correcting the centerline plat recorded in Book 9 Page 19. The change in location, type & number of centerline Reference monuments.

I hereby certify that this plat is a true Delineation of a Survey made for the Ohio Department of Highways in 1970 by William D. Lacey professional Surveyor, for correcting reference monuments.



NOTE: O.L. Refers to Out Lots as shown in the Auditors Plat Book for Lee Twp.

I Hereby Certify That This Plat is A True Delineation of A Survey Made For The Ohio Department of Highways In 1967 By Franklin Engineering Assoc. Ltd.  
Date 8-16-68  
Surveyors No. 1620