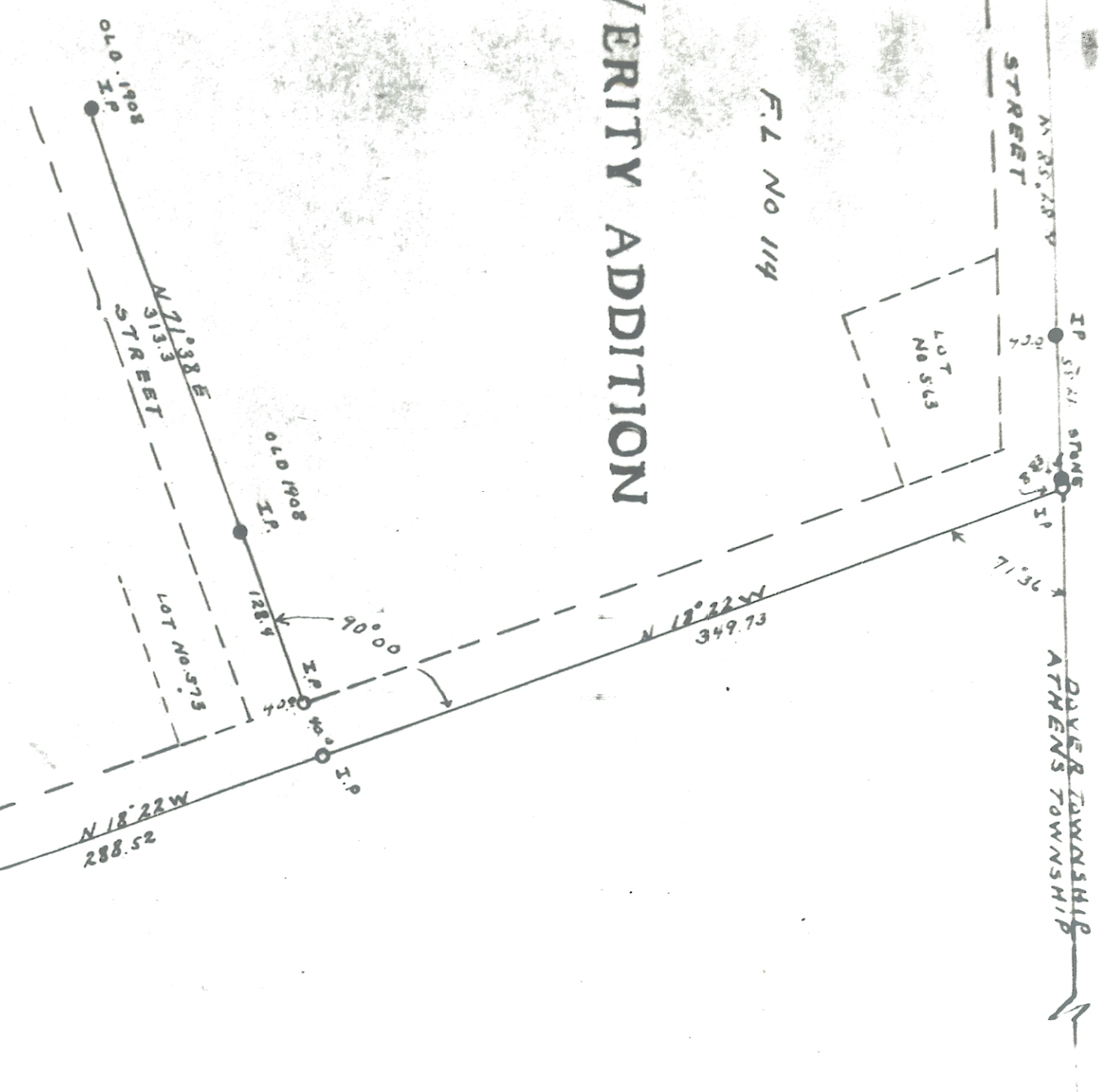


N 25° 25' W
 STREET
 IF 324.11 STONE
 ATHENS TOWNSHIP
 N E CORNER
 F L 114

F L No 114

VERITY ADDITION



KNOW ALL MEN BY THESE PRESENTS:
 THAT WE, EDWARD A. & MARGARET K. COTTINGHAM, OWNERS OF,
 LAND DELINEATED ON THIS PLAT DO HEREBY ACKNOWLEDGE THE
 MAKING OF THE SAME TO BE OUR VOLUNTARY ACT AND DEED, AND
 DO HEREBY DEDICATE THE STREETS FOR PUBLIC USE FOREVER
 WITNESS:
 Edward A. Cottingham
 Margaret K. Cottingham

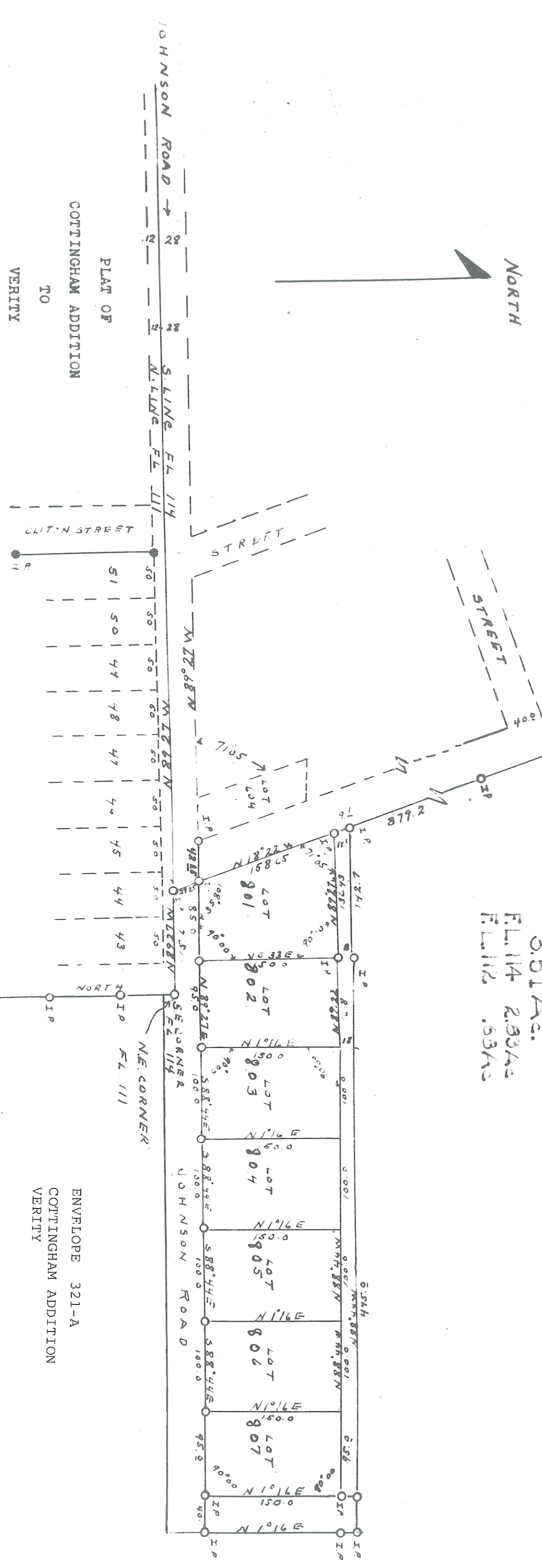
CERTIFIED TO BEFORE ME A NOTARY PUBLIC THIS 22 DAY OF OCT 1954
 NOTARY PUBLIC
 Carlos Oge

I HEREBY CERTIFY THAT THE ABOVE PLAT AND NOTES ARE CORRECT AS
 SURVEYED BY ME, MAY 1954, ORLAND GANDEE, SURVEYOR, SER. NO. 2417
 CERTIFIED TO BEFORE ME A NOTARY PUBLIC THIS 7 DAY OF OCT 1954
 NOTARY PUBLIC
 Carlos Oge

ACCEPTED BY THE COMMISSIONERS OF ATHENS COUNTY
 By Charles Bricker
 County Engineer & Planning Comm.
 W. H. Bricker
 W. H. Bricker

TRANSFERRED October 8
 RECEIVED OCT 9 - 1954 P.M.
 J. M. W. Auditor
 31299 \$5.00

351 Ac.
 F.L. 114 233 Ac
 F.L. 112 .53 Ac



FARM OR LEASE LOT NO. 112 - 114
 SECTION 24
 T 9 R 14
 OF PARTS OF
 COTTINGHAM ADDITION
 TO
 VERITY

ATHENS TOWNSHIP ATHENS COUNTY
 ORLAND GANDEE
 SURVEYOR SER. NO. 2417
 SCALE 1" = 100'

SW CORNER
 F.L. 112
 NE CORNER
 F.L. 111