

MONUMENT LEGEND

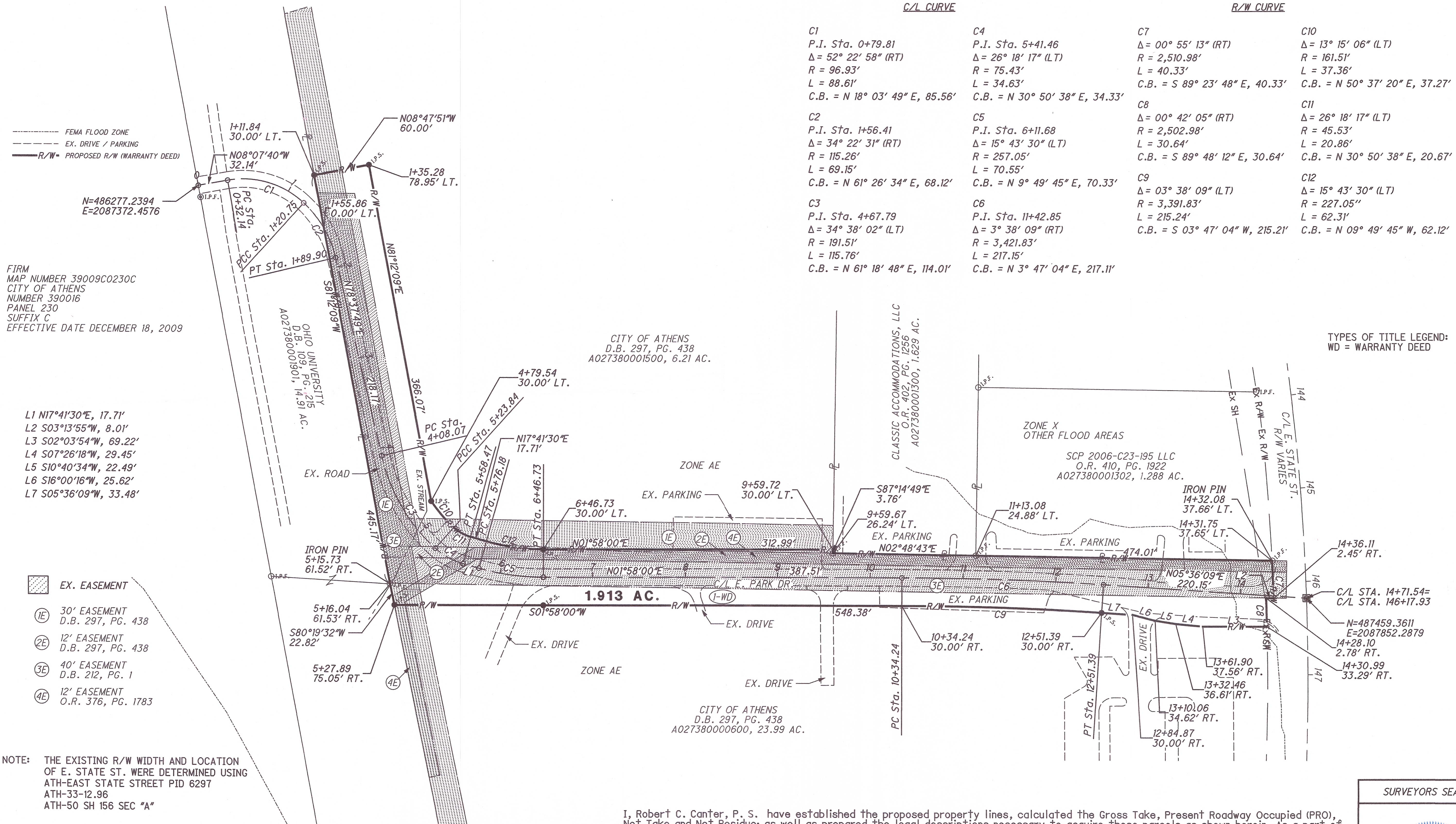
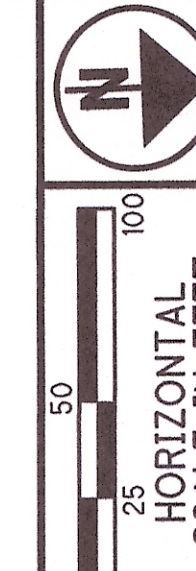
- I.R.F. IRON PIN FOUND
- I.R.S. IRON PIN SET W/ ID CAP
- ▣ MONUMENT BOX SET W/ 1" IRON PIN

E. PARK DRIVE PUBLIC RIGHT-OF-WAY

STATE OF OHIO, ATHENS COUNTY
AUDITOR'S SECTION 4, T9N, R14W
FARM LOT 26
CITY OF ATHENS

BASIS FOR BEARINGS:

ALL BEARINGS SHOWN ARE FOR PROJECT USE ONLY.
NAD 83 (2011), OHIO STATE PLANE, SOUTH ZONE



C/L CURVE		R/W CURVE	
C1	P.I. Sta. 0+79.81 Δ = 52° 22' 58" (RT) R = 96.93' L = 88.61' C.B. = N 18° 03' 49" E, 85.56'	C4	P.I. Sta. 5+41.46 Δ = 26° 18' 17" (LT) R = 75.43' L = 34.63' C.B. = N 30° 50' 38" E, 34.33'
C2	P.I. Sta. 1+56.41 Δ = 34° 22' 31" (RT) R = 115.26' L = 69.15' C.B. = N 61° 26' 34" E, 68.12'	C5	P.I. Sta. 6+11.68 Δ = 15° 43' 30" (LT) R = 257.05' L = 70.55' C.B. = N 9° 49' 45" E, 70.33'
C3	P.I. Sta. 4+67.79 Δ = 34° 38' 02" (LT) R = 191.51' L = 115.76' C.B. = N 61° 18' 48" E, 114.01'	C6	P.I. Sta. 11+42.85 Δ = 3° 38' 09" (RT) R = 3,421.83' L = 217.15' C.B. = N 3° 47' 04" E, 217.11'
		C7	Δ = 00° 55' 13" (RT) R = 2,510.98' L = 40.33' C.B. = S 89° 23' 48" E, 40.33'
		C8	Δ = 00° 42' 05" (RT) R = 2,502.98' L = 30.64' C.B. = S 89° 48' 12" E, 30.64'
		C9	Δ = 03° 38' 09" (LT) R = 3,391.83' L = 215.24' C.B. = S 03° 47' 04" W, 215.21'
		C10	Δ = 13° 15' 06" (LT) R = 161.51' L = 37.36' C.B. = N 50° 37' 20" E, 37.27'
		C11	Δ = 26° 18' 17" (LT) R = 45.53' L = 20.86' C.B. = N 30° 50' 38" E, 20.67'
		C12	Δ = 15° 43' 30" (LT) R = 227.05" L = 62.31' C.B. = N 09° 49' 45" W, 62.12'

- FEMA FLOOD ZONE
- EX. DRIVE / PARKING
- R/W - PROPOSED R/W (WARRANTY DEED)

FIRM
MAP NUMBER 39009C0230C
CITY OF ATHENS
NUMBER 390016
PANEL 230
SUFFIX C
EFFECTIVE DATE DECEMBER 18, 2009

- L1 N17°41'30"E, 17.71'
- L2 S03°13'55"W, 8.01'
- L3 S02°03'54"W, 69.22'
- L4 S07°26'18"W, 29.45'
- L5 S10°40'34"W, 22.49'
- L6 S16°00'16"W, 25.62'
- L7 S05°36'09"W, 33.48'

- ▨ EX. EASEMENT
- ⓔ 30' EASEMENT
D.B. 297, PG. 438
- ⓔ 12' EASEMENT
D.B. 297, PG. 438
- ⓔ 40' EASEMENT
D.B. 212, PG. 1
- ⓔ 12' EASEMENT
O.R. 376, PG. 1783

NOTE: THE EXISTING R/W WIDTH AND LOCATION OF E. STATE ST. WERE DETERMINED USING ATH-EAST STATE STREET PID 6297 ATH-33-12.96 ATH-50 SH 156 SEC "A"

CITY OF ATHENS
D.B. 297, PG. 438
A027380001500, 6.21 AC.

CLASSIC ACCOMMODATIONS, LLC
O.R. 402, PG. 1256
A027380001500, 1.629 AC.

SCP 2006-C23-195 LLC
O.R. 410, PG. 1922
A027380001302, 1.288 AC.

CITY OF ATHENS
D.B. 297, PG. 438
A027380000600, 23.99 AC.

TYPES OF TITLE LEGEND:
WD = WARRANTY DEED

I, Robert C. Canter, P. S. have established the proposed property lines, calculated the Gross Take, Present Roadway Occupied (PRO), Net Take and Net Residue; as well as prepared the legal descriptions necessary to acquire these parcels as shown herein. As a part of this work I have set right of way monuments at the property corners, property line intersections, points along the right of way and/or angle points on the right of way, Section Corners and other points as shown herein. All of my work contained herein was conducted in accordance with Ohio Administrative Code 4733-37 commonly known as "Minimum Standards for Boundary Surveys in the State of Ohio" unless noted. The words I and my as used herein are to mean either myself or someone working under my direct supervision.

SURVEYORS SEAL

RECEIVED November 30, 2018
RECORDED November 30, 2018
BOOK ENVELOPE PAGE 577B
Jessica Martinez ES
COUNTY RECORDER

buckleygroup
engineering + surveying
6801 SR 56
ATHENS, OHIO 45701
740-589-5001

Robert C. Canter
Robert C. Canter, Professional Land Surveyor No. 7226,

Date: 7-13-18

PID NO. R/W DESIGNER HTM R/W REVIEWER RCC
PUBLIC RIGHT-OF-WAY PLAT
EAST PARK DRIVE
2
2