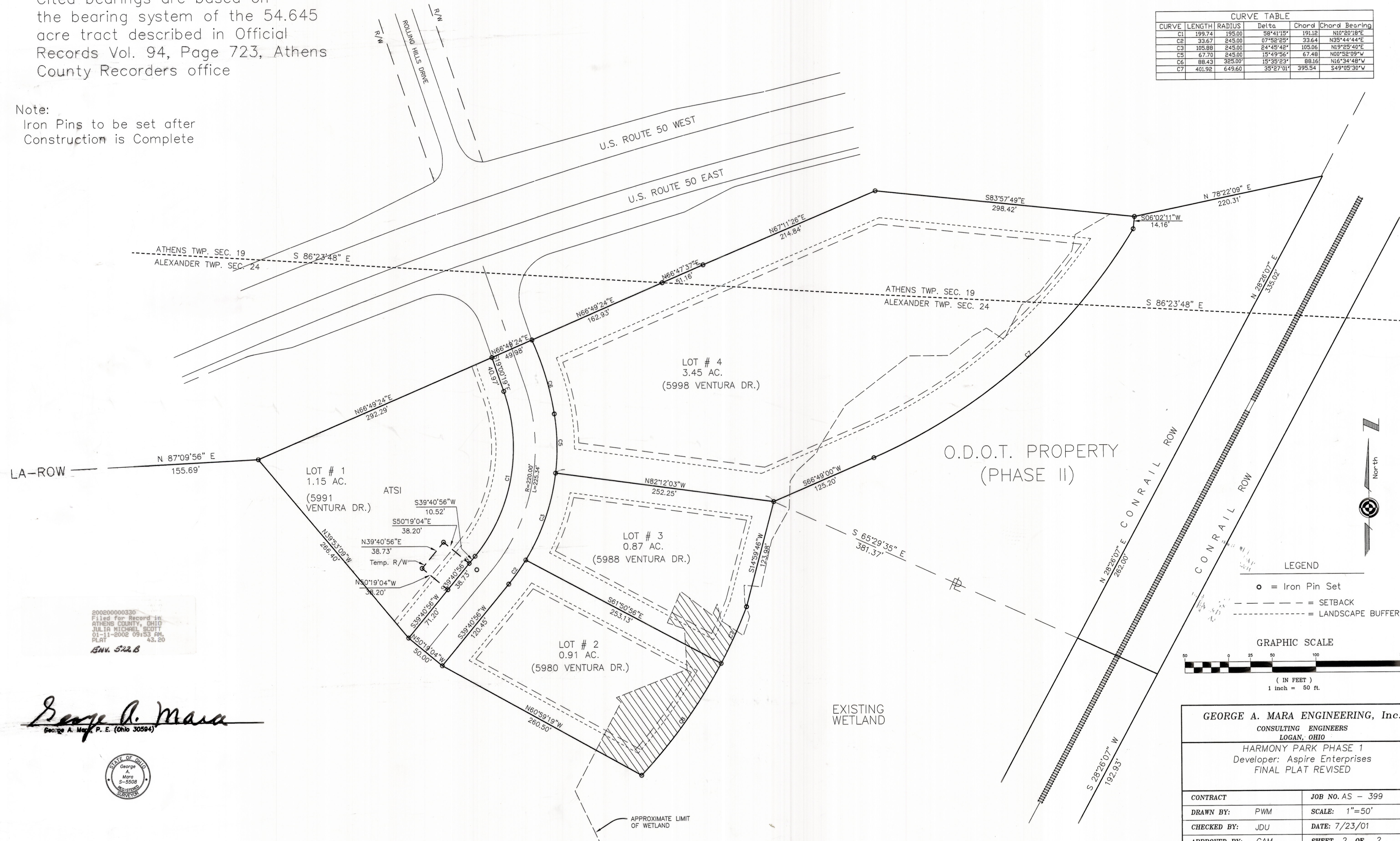


Total Lot Area = 6.38 Ac.
 Total Right of Way = 0.45 Ac.
 Total Reserve Area = 0.0 Ac.
 Total Subdivision Area = 6.83 Ac.

Basis of Bearings
 Cited bearings are based on
 the bearing system of the 54.645
 acre tract described in Official
 Records Vol. 94, Page 723, Athens
 County Recorders office

Note:
 Iron Pins to be set after
 Construction is Complete

CURVE TABLE					
CURVE	LENGTH	RADIUS	Delta	Chord	Chord Bearing
C1	199.74	195.00	58°41'15"	191.12	N10°20'18"E
C2	33.67	245.00	07°52'25"	33.64	N35°44'44"E
C3	105.88	245.00	24°45'42"	105.66	N19°25'40"E
C5	67.70	245.00	15°49'56"	67.48	N00°52'09"W
C6	88.43	325.00	15°39'23"	88.16	N16°34'48"W
C7	461.92	649.60	35°27'01"	395.54	S49°05'30"W



200200000330
 Filed for Record in
 ATHENS COUNTY, OHIO
 JULIA MICHAEL SCOTT
 01-11-2002 09:53 AM,
 PLAT 43.20
 ENV. 522 B

George A. Mara
 George A. Mara, P. E. (Ohio 30584)



LEGEND

- = Iron Pin Set
- - - = SETBACK
- - - - - = LANDSCAPE BUFFER

GRAPHIC SCALE
 (IN FEET)
 1 inch = 50 ft.

GEORGE A. MARA ENGINEERING, Inc.
 CONSULTING ENGINEERS
 LOGAN, OHIO

HARMONY PARK PHASE 1
 Developer: Aspire Enterprises
 FINAL PLAT REVISED

CONTRACT	JOB NO. AS - 399
DRAWN BY: PWM	SCALE: 1"=50'
CHECKED BY: JDU	DATE: 7/23/01
APPROVED BY: GAM	SHEET 2 OF 2