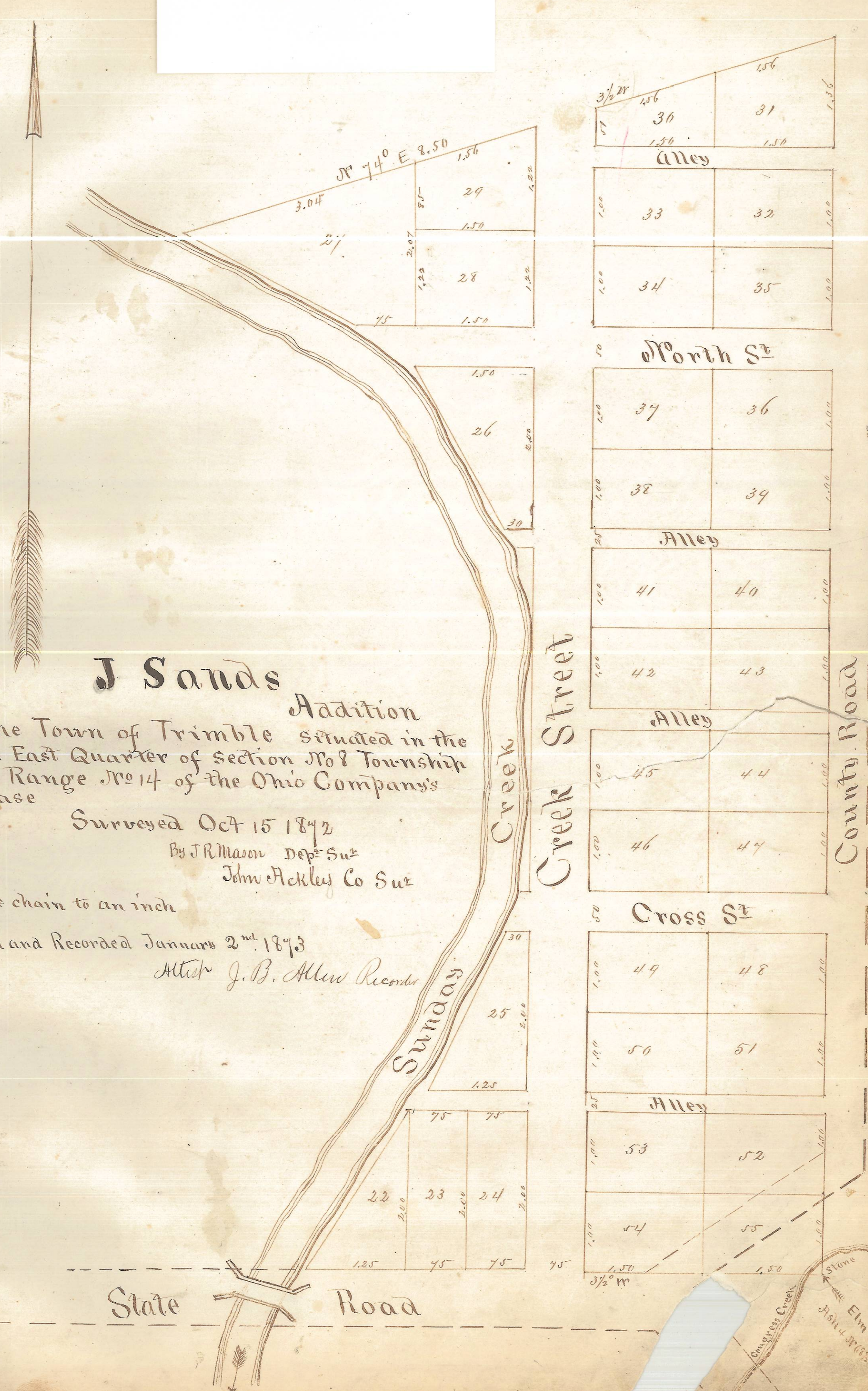


ENVELOPE: 85D

J. SAND'S ADDITION - TRIMBLE



# J Sands

## Addition

To The Town of Trimble situated in the North East Quarter of section No 8 Township No 11 Range No 14 of the Ohio Company's purchase

Surveyed Oct 15 1842

By J R Mason Dep<sup>y</sup> Sur<sup>r</sup>

John Ackley Co Sur<sup>r</sup>

Scale one chain to an inch

Entered and Recorded January 2<sup>nd</sup> 1843

Attest J. B. Allen Recorder

69

Stone  
Elm 20 East 7 1/2 W  
J. B. Allen - J. W. E. 37