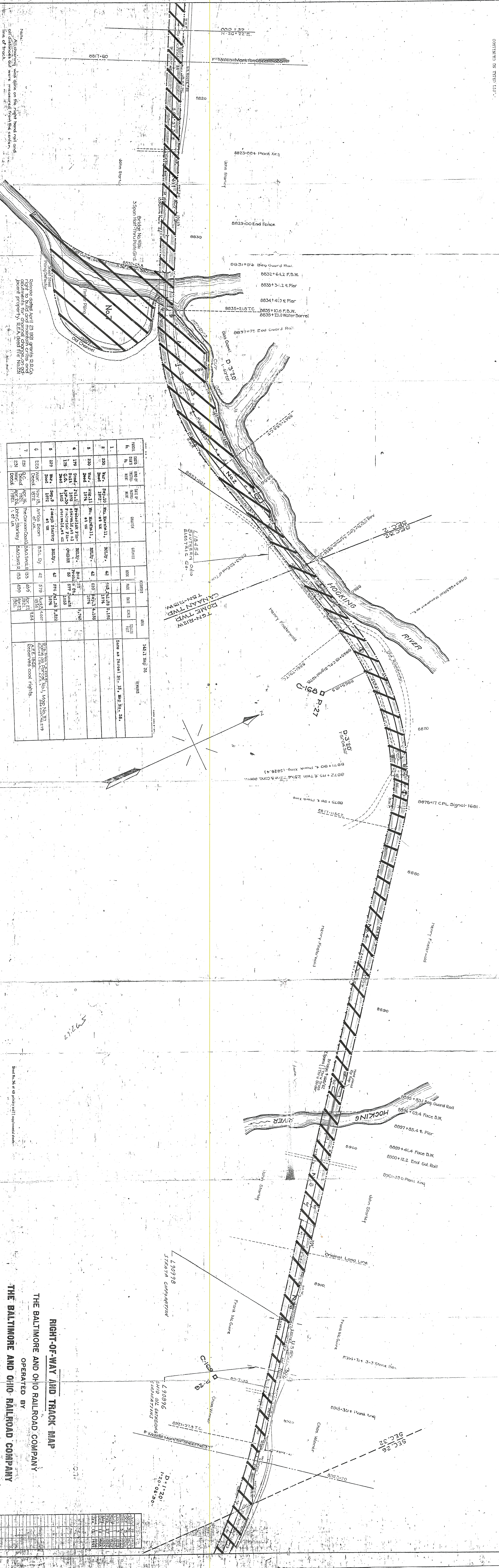


AUTHORITY	DATE INSTALLED OR RETIRED	DESCRIPTION
CIT 769 AFL 1869	Oct. 1921	Reconstruction of bridge 167/41 across Hocking River near station 8832+00. Two new piers, new bridge spans on pre- existing abutments. Original bridge spans removed. River improved and a short channel of river improved and a short Purchase of parcel of land containing 9.4 Acres from John C. Starnley by deed dated 1921. Right of way station 8834+00 near Guysville, O.
C-2738 AFL 2738	May 20-1925	Construction of entire new bridge No. 189/62 and pier of concrete and two span iron truss spans, including old two span iron truss spans, including old pier structure.

ATHENS CO., OHIO



LINE	DATE	NO. OF	DATE	OWNER	ACRES	DATE	DATE	DATE	DATE	REMARKS
1	1871	1	1871	John Starnley	4.2	1871	1871	1871	1871	Same as Special No. 15, Map No. 25.
2	1871	2	1871	John Starnley	4.2	1871	1871	1871	1871	
3	1871	3	1871	John Starnley	4.2	1871	1871	1871	1871	
4	1871	4	1871	John Starnley	4.2	1871	1871	1871	1871	
5	1871	5	1871	John Starnley	4.2	1871	1871	1871	1871	
6	1871	6	1871	John Starnley	4.2	1871	1871	1871	1871	
7	1871	7	1871	John Starnley	4.2	1871	1871	1871	1871	

Note: All bearings were taken on the right hand rail end of distance and were measured from the center line of track.

Deeds dated April 22, 1891 grants P.O.C. Right to build and maintain crib and dock property of John Starnley, 1891.

1891-1892
1892-1893
1893-1894
1894-1895
1895-1896
1896-1897
1897-1898
1898-1899
1899-1900
1900-1901
1901-1902
1902-1903
1903-1904
1904-1905
1905-1906
1906-1907
1907-1908
1908-1909
1909-1910
1910-1911
1911-1912
1912-1913
1913-1914
1914-1915
1915-1916
1916-1917
1917-1918
1918-1919
1919-1920
1920-1921
1921-1922
1922-1923
1923-1924
1924-1925
1925-1926
1926-1927
1927-1928
1928-1929
1929-1930
1930-1931
1931-1932
1932-1933
1933-1934
1934-1935
1935-1936
1936-1937
1937-1938
1938-1939
1939-1940
1940-1941
1941-1942
1942-1943
1943-1944
1944-1945
1945-1946
1946-1947
1947-1948
1948-1949
1949-1950
1950-1951
1951-1952
1952-1953
1953-1954
1954-1955
1955-1956
1956-1957
1957-1958
1958-1959
1959-1960
1960-1961
1961-1962
1962-1963
1963-1964
1964-1965
1965-1966
1966-1967
1967-1968
1968-1969
1969-1970
1970-1971
1971-1972
1972-1973
1973-1974
1974-1975
1975-1976
1976-1977
1977-1978
1978-1979
1979-1980
1980-1981
1981-1982
1982-1983
1983-1984
1984-1985
1985-1986
1986-1987
1987-1988
1988-1989
1989-1990
1990-1991
1991-1992
1992-1993
1993-1994
1994-1995
1995-1996
1996-1997
1997-1998
1998-1999
1999-2000
2000-2001
2001-2002
2002-2003
2003-2004
2004-2005
2005-2006
2006-2007
2007-2008
2008-2009
2009-2010
2010-2011
2011-2012
2012-2013
2013-2014
2014-2015
2015-2016
2016-2017
2017-2018
2018-2019
2019-2020
2020-2021
2021-2022
2022-2023
2023-2024
2024-2025

Stat No. 56 of 49 paces and 11 paces and 11 paces

RIGHT-OF-WAY AND TRACK MAP
THE BALTIMORE AND OHIO RAILROAD COMPANY
OPERATED BY
THE BALTIMORE AND OHIO RAILROAD COMPANY
CHICAGO DIVISION
MAIN LINE
STATION 8871+00 TO STATION 8923+20
SCALE: 1 IN. = 200 FT.
JUNE 30, 1918
OFFICE OF VALUATION ENGINEER
BALTIMORE, MD.
Map No. 08113 of 254

1-01-1451 (39)

PROJECT	DATE	RECORDED	FILED	REMARKS	
279	Dec 1911	209	535	1931	Subject to license of other companies, etc. See regulations, Appendix 1, H. 100, property etc. See record No. 1, Map No. 1, R.F.C. 20258.

1-01-1451 (39)