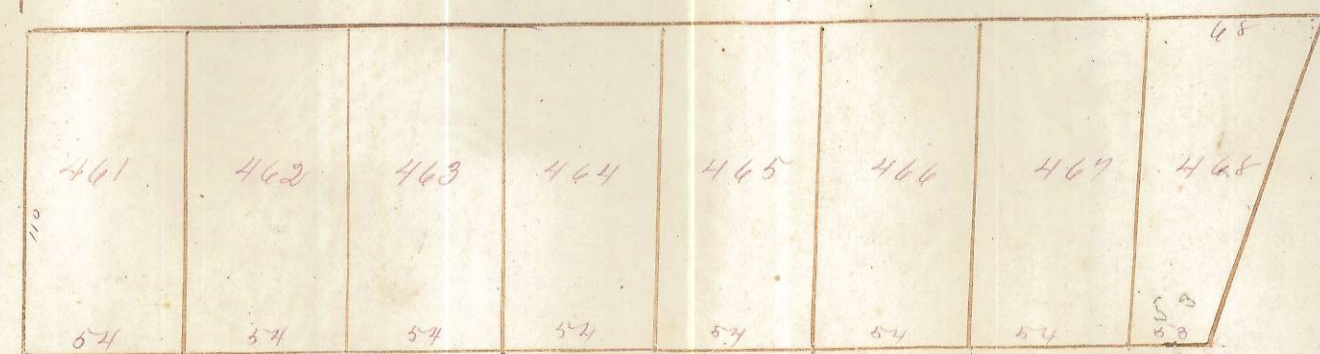
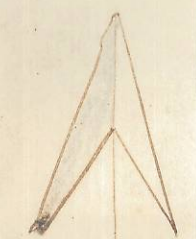
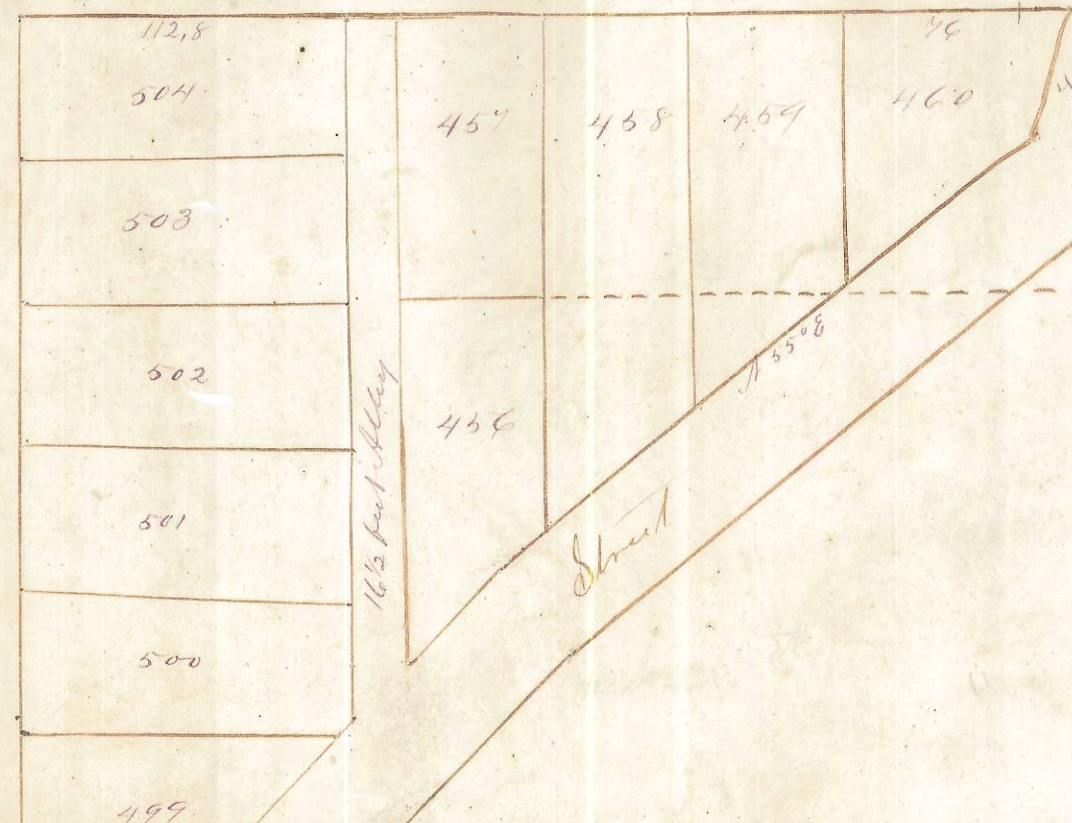


ENVELOPE: 84A

JOS. VERITY'S ADDITION  
NELSONVILLE



Black Diamond Street



Verity Street

16 1/2 feet alley

Street

Fort

Jos Verity's addition to the Town Plat of Nelsonville is situated in the west end of out. Lots Nos 10 & 11 Wall Survey The Struts, alleys and lots are either parallel or at right angles with the lot lines except their particular courses are noted on the map distance given in feet.

Scale of 1 Chain to an inch. July 15th 1871  
John H. Kelly Surveyor  
Entered & Recorded Oct 30th 1871  
Wm. Josiah Allen  
Recorder.

OLD PLAT BOOK # 1, Page 55

55