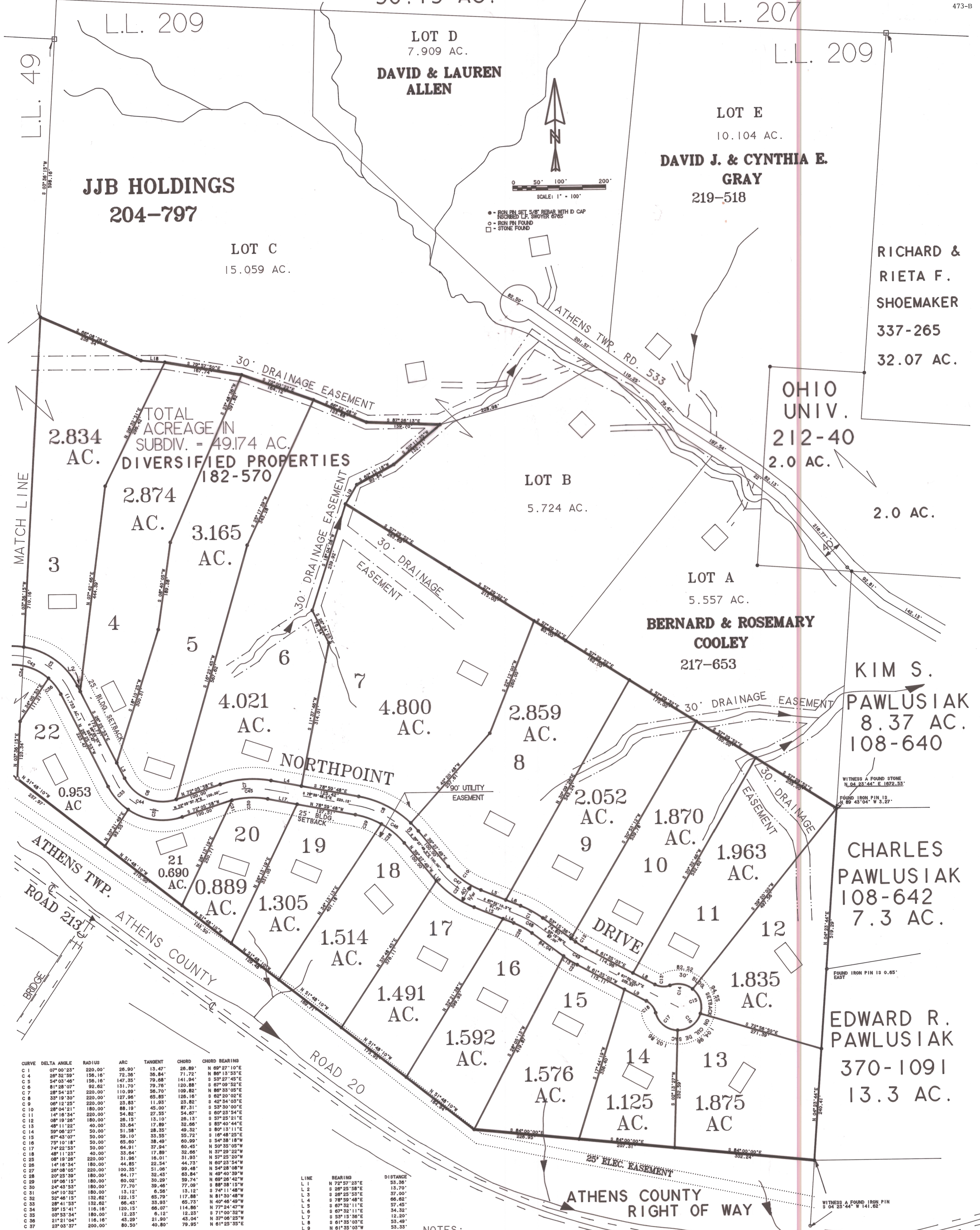


# NORTHPOINT SUBDIVISION

RICHARD H. & WALFRAUD BALD 328-279 L.L. 206  
50.15 AC.

VIRGIL JOHNSON ETAL  
249-35  
95.67 AC.  
L.L. 207

NORTHPOINT SUBDIVISION  
473-B



2.834 AC.  
2.874 AC.  
3.165 AC.  
TOTAL ACREAGE IN SUBDIV. = 49.174 AC.  
DIVERSIFIED PROPERTIES 182-570

LOT C 15.059 AC.  
LOT B 5.724 AC.  
LOT A 5.557 AC.

LOT D 7.909 AC.  
LOT E 10.104 AC.

LOT 3  
LOT 4  
LOT 5  
LOT 6  
LOT 7

LOT 22  
LOT 21  
LOT 20  
LOT 19  
LOT 18  
LOT 17  
LOT 16  
LOT 15  
LOT 14  
LOT 13  
LOT 12  
LOT 11  
LOT 10  
LOT 9  
LOT 8

LOT 22 0.953 AC.  
LOT 21 0.690 AC.  
LOT 20 0.889 AC.  
LOT 19 1.305 AC.  
LOT 18 1.514 AC.  
LOT 17 1.491 AC.  
LOT 16 1.592 AC.  
LOT 15 1.576 AC.  
LOT 14 1.125 AC.  
LOT 13 1.875 AC.  
LOT 12 1.835 AC.  
LOT 11 1.963 AC.  
LOT 10 1.870 AC.  
LOT 9 2.052 AC.  
LOT 8 2.859 AC.

LOT 22 0.953 AC.  
LOT 21 0.690 AC.  
LOT 20 0.889 AC.  
LOT 19 1.305 AC.  
LOT 18 1.514 AC.  
LOT 17 1.491 AC.  
LOT 16 1.592 AC.  
LOT 15 1.576 AC.  
LOT 14 1.125 AC.  
LOT 13 1.875 AC.  
LOT 12 1.835 AC.  
LOT 11 1.963 AC.  
LOT 10 1.870 AC.  
LOT 9 2.052 AC.  
LOT 8 2.859 AC.

LOT 22 0.953 AC.  
LOT 21 0.690 AC.  
LOT 20 0.889 AC.  
LOT 19 1.305 AC.  
LOT 18 1.514 AC.  
LOT 17 1.491 AC.  
LOT 16 1.592 AC.  
LOT 15 1.576 AC.  
LOT 14 1.125 AC.  
LOT 13 1.875 AC.  
LOT 12 1.835 AC.  
LOT 11 1.963 AC.  
LOT 10 1.870 AC.  
LOT 9 2.052 AC.  
LOT 8 2.859 AC.

LOT 22 0.953 AC.  
LOT 21 0.690 AC.  
LOT 20 0.889 AC.  
LOT 19 1.305 AC.  
LOT 18 1.514 AC.  
LOT 17 1.491 AC.  
LOT 16 1.592 AC.  
LOT 15 1.576 AC.  
LOT 14 1.125 AC.  
LOT 13 1.875 AC.  
LOT 12 1.835 AC.  
LOT 11 1.963 AC.  
LOT 10 1.870 AC.  
LOT 9 2.052 AC.  
LOT 8 2.859 AC.

LOT 22 0.953 AC.  
LOT 21 0.690 AC.  
LOT 20 0.889 AC.  
LOT 19 1.305 AC.  
LOT 18 1.514 AC.  
LOT 17 1.491 AC.  
LOT 16 1.592 AC.  
LOT 15 1.576 AC.  
LOT 14 1.125 AC.  
LOT 13 1.875 AC.  
LOT 12 1.835 AC.  
LOT 11 1.963 AC.  
LOT 10 1.870 AC.  
LOT 9 2.052 AC.  
LOT 8 2.859 AC.

CURVE	DELTA ANGLE	RADIUS	ARC	TANGENT	CHORD	CHORD BEARING
C 1	07°00'23"	220.00'	26.90'	13.47'	26.89'	N 09°27'10"E
C 4	26°32'59"	156.16'	72.56'	36.84'	71.72'	N 06°13'53"E
C 5	54°05'46"	156.16'	147.35'	79.68'	141.94'	S 53°27'45"E
C 6	81°28'07"	92.62'	131.70'	79.76'	120.88'	S 07°09'52"E
C 7	28°54'25"	220.00'	110.99'	50.70'	109.82'	N 86°33'05"E
C 8	33°13'30"	220.00'	127.06'	65.85'	126.16'	S 62°20'02"E
C 9	06°12'25"	220.00'	23.83'	11.93'	23.82'	S 42°34'03"E
C 10	28°04'21"	180.00'	88.19'	45.00'	87.31'	S 53°30'00"E
C 11	14°16'34"	220.00'	64.91'	27.55'	54.67'	S 60°23'54"E
C 12	08°19'26"	180.00'	26.15'	13.10'	26.13'	S 57°25'21"E
C 13	48°11'22"	40.00'	33.04'	17.89'	32.68'	S 82°40'44"E
C 14	50°06'27"	50.00'	51.58'	28.35'	49.32'	S 80°13'11"E
C 15	67°43'07"	50.00'	59.10'	33.55'	55.72'	S 16°48'25"E
C 16	73°10'18"	50.00'	65.80'	38.49'	60.99'	S 54°38'18"W
C 17	74°22'53"	50.00'	64.91'	37.94'	60.45'	N 59°35'05"W
C 18	48°11'23"	40.00'	33.64'	17.89'	32.68'	N 37°29'22"W
C 19	08°19'26"	220.00'	31.96'	16.01'	31.93'	N 57°25'20"W
C 20	14°16'34"	180.00'	44.85'	22.54'	44.73'	N 60°23'54"W
C 21	26°08'05"	220.00'	100.35'	51.08'	99.48'	N 54°28'08"W
C 22	20°25'39"	180.00'	64.17'	32.45'	63.84'	N 40°40'00"W
C 23	19°08'15"	180.00'	60.05'	30.29'	59.74'	N 69°26'42"W
C 24	24°43'53"	180.00'	77.70'	39.46'	77.09'	N 88°38'15"W
C 25	04°10'32"	180.00'	13.12'	6.56'	13.12'	S 74°11'48"W
C 26	32°46'15"	132.62'	122.15'	65.79'	117.88'	N 81°30'48"W
C 27	28°41'53"	132.62'	66.43'	33.93'	65.73'	N 40°46'49"W
C 28	39°15'41"	116.16'	120.15'	66.07'	114.86'	N 77°24'47"W
C 29	03°53'54"	180.00'	12.33'	6.12'	12.23'	S 71°00'32"W
C 30	21°21'04"	116.16'	43.29'	21.90'	43.04'	N 37°06'25"W
C 31	23°03'57"	200.00'	80.50'	40.80'	79.95'	N 61°25'35"E

LINE	BEARING	DISTANCE
L 1	N 72°57'23"E	23.36'
L 2	S 26°25'58"E	15.70'
L 3	S 26°25'53"E	37.00'
L 4	S 78°59'48"E	66.62'
L 5	S 67°32'11"E	57.45'
L 6	S 67°32'11"E	34.32'
L 7	S 53°15'36"E	12.30'
L 8	S 61°35'03"E	53.49'
L 9	N 61°35'03"W	53.33'
L 10	N 53°15'36"W	2.36'
L 11	N 67°32'11"W	24.59'
L 12	N 67°32'11"W	67.18'
L 13	N 53°15'36"W	2.36'
L 14	N 67°32'11"W	24.59'
L 15	N 67°32'11"W	67.18'
L 16	N 40°25'58"W	7.44'
L 17	N 78°59'48"W	64.53'
L 18	S 85°07'44"E	51.67'
L 19	S 31°16'23"W	47.81'

NOTES:  
1. BUILDING SETBACKS AND 40' RIGHT OF WAY ARE TO BE USED FOR INSTALLATION AND EASEMENT FOR UTILITIES EXISTING DRAINAGE PATTERNS  
2. 30' DRAINAGE EASEMENTS ARE TO FOLLOW EXISTING DRAINAGE PATTERNS  
3. [Symbol] - POTENTIAL BUILDING SITE

4. 49.174 = TOTAL ACRES (6.07 IN L.L. 49 & 43.104 AC. IN L.L. 209)  
- 47.235 = TOTAL ACRES IN LOTS  
1.939 = TOTAL ACRES IN ROAD

9600009133  
Filed for Record in  
ATHENS COUNTY, OHIO  
JULIA MICHAEL SCOTT  
Dn 12-20-1996 At 08:40 am.  
PLAT  
43.20  
ENV. 473 B