



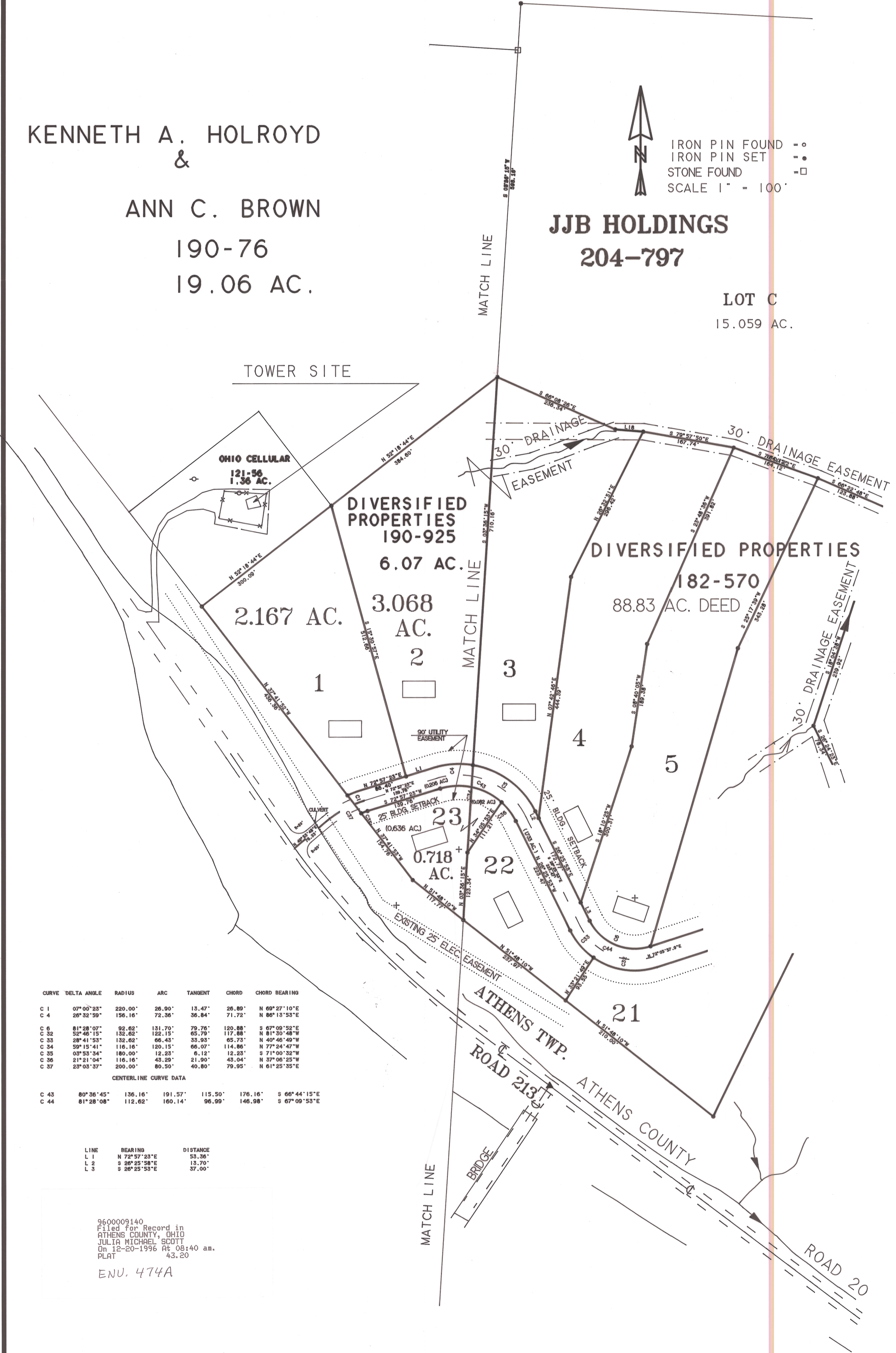
KENNETH A. HOLROYD
&
ANN C. BROWN
190-76
19.06 AC.

JJB HOLDINGS
204-797

LOT C
15.059 AC.



IRON PIN FOUND - o
IRON PIN SET - ●
STONE FOUND - □
SCALE 1" = 100'



CURVE	DELTA ANGLE	RADIUS	ARC	TANGENT	CHORD	CHORD BEARING
C 1	07°00'33"	220.00'	26.90'	13.47'	26.89'	N 69°27'10"E
C 4	26°32'59"	156.16'	72.36'	36.84'	71.72'	N 86°13'53"E
C 6	81°28'07"	92.62'	131.70'	79.76'	120.88'	S 67°09'52"E
C 32	52°46'15"	132.62'	122.15'	65.79'	117.88'	N 81°35'48"W
C 33	28°41'53"	132.62'	66.43'	33.93'	65.73'	N 40°46'49"W
C 34	59°15'41"	116.16'	120.15'	66.07'	114.86'	N 77°24'47"W
C 35	09°53'34"	180.00'	12.23'	6.12'	12.23'	S 71°00'32"W
C 36	21°21'04"	116.16'	43.29'	21.90'	43.94'	N 37°06'23"W
C 37	23°03'37"	200.00'	80.50'	40.80'	79.95'	N 61°25'35"E

CENTERLINE CURVE DATA

C 43	80°36'45"	136.16'	191.57'	115.50'	176.16'	S 66°44'15"E
C 44	81°28'08"	112.62'	160.14'	96.99'	146.98'	S 67°09'53"E

LINE	BEARING	DISTANCE
L 1	N 72°57'23"E	53.36'
L 2	S 26°25'58"E	13.70'
L 3	S 26°25'53"E	37.00'

960009140
Filed for Record in
ATHENS COUNTY, OHIO
JULIA MICHAEL SCOTT
On 12-20-1996 At 08:40 am.
PLAT 43.20
ENU. 474A