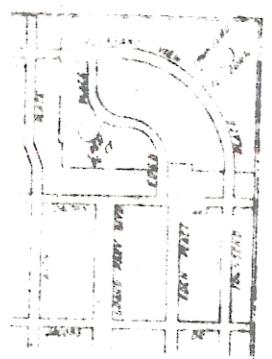
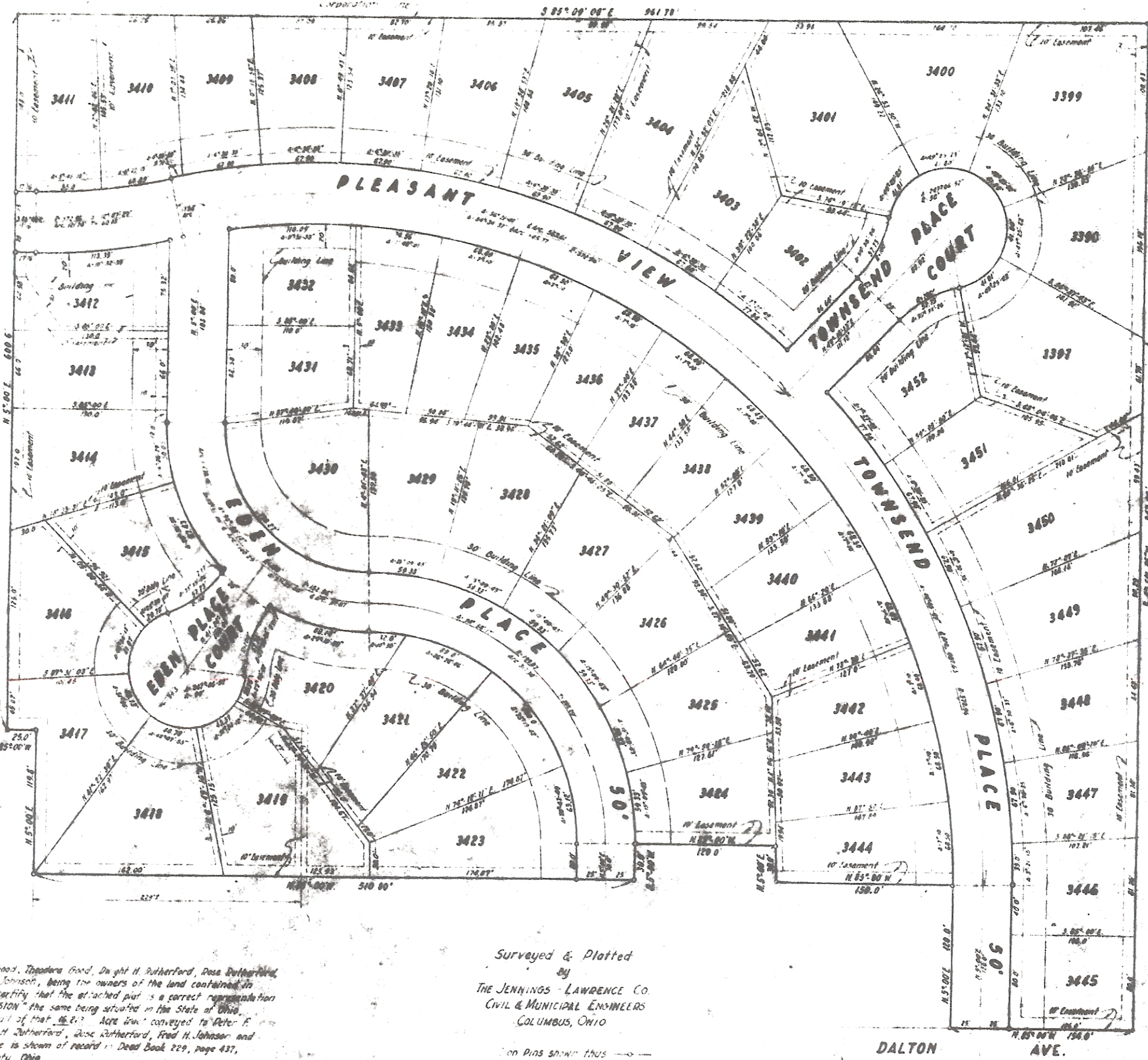


# PARK HILL SUBDIVISION



VICINITY MAP

The undersigned, Peter F. Good, Theodore Good, Dwight H. Dufferford, Rose Dufferford, Elizabeth Johnson, being the owners of the land contained in the attached plat, do hereby certify that the attached plat is a correct representation of the 'PARK HILL SUBDIVISION' the same being situated in the State of Ohio, County of Athens and City of Athens, Ohio. Acts done conveyed to Peter F. Good, Theodore Good, Dwight H. Dufferford, Rose Dufferford, Elizabeth Johnson and Elizabeth Johnson, as the same is shown of record in Deed Book 222, page 437, Recorder's Office, Athens County, Ohio.

Surveyed & Plotted by  
THE JENNINGS-LAWRENCE CO.  
CIVIL & MUNICIPAL ENGINEERS  
COLUMBUS, OHIO

On this 15th day of March, 1960  
Scale 1"=50'

STATE OF OHIO  
COUNTY OF ATHENS } ss

Before me, a Notary Public in and for said County, personally came Peter F. Good, Theodore Good, Dwight H. Dufferford, Rose Dufferford, Elizabeth Johnson and Elizabeth Johnson, who acknowledge the signing of the foregoing certificate to be their free and voluntary act and deed for the uses and purposes herein expressed.

IN WITNESS WHEREOF, I have hereunto set my hand and affixed my official seal this 15th day of March, 1960.

We hereby certify that the attached plat is correct. Dimensions shown on curves are chord measurements. If street corner radii are ten feet unless otherwise shown.

THE JENNINGS-LAWRENCE CO.  
Registered Surveyors in Ohio

Witness:  
John W. Dufferford  
Theodore Good  
Dwight H. Dufferford  
Rose Dufferford  
Elizabeth Johnson

Approved this 15th day of March, 1960  
Approved this 23rd day of March, 1960  
Approved this 19th day of October, 1960  
Approved this 15th day of March, 1960  
Approved this 15th day of March, 1960  
Approved this 15th day of March, 1960  
Approved this 15th day of March, 1960  
Approved this 15th day of March, 1960  
Approved this 15th day of March, 1960  
Approved this 15th day of March, 1960

ENVELOPE 363-B  
PARK HILL SUBDIVISION  
ATHENS

57030  
Francis J. Evans  
Clerk

For restrictions see Page 34  
For amended plat see 105, this Vol. 11-24-65

See page 34 for Restrictions