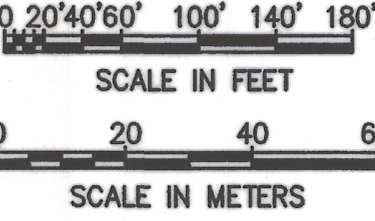
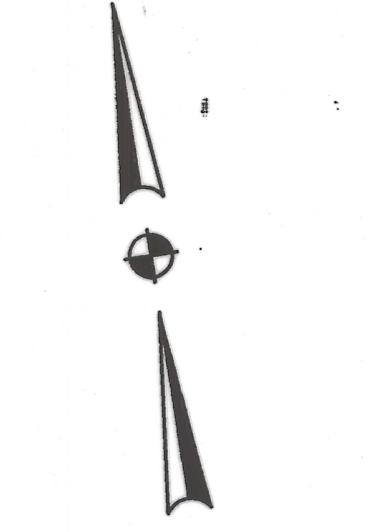


NOTE: ALL DISTANCES ALONG EXISTING PROPERTY LINE ARE IN FEET THE CENTERLINE STATION ARE IN METERS. THE CONVERSION FACTOR IS 1' = 0.3048 m

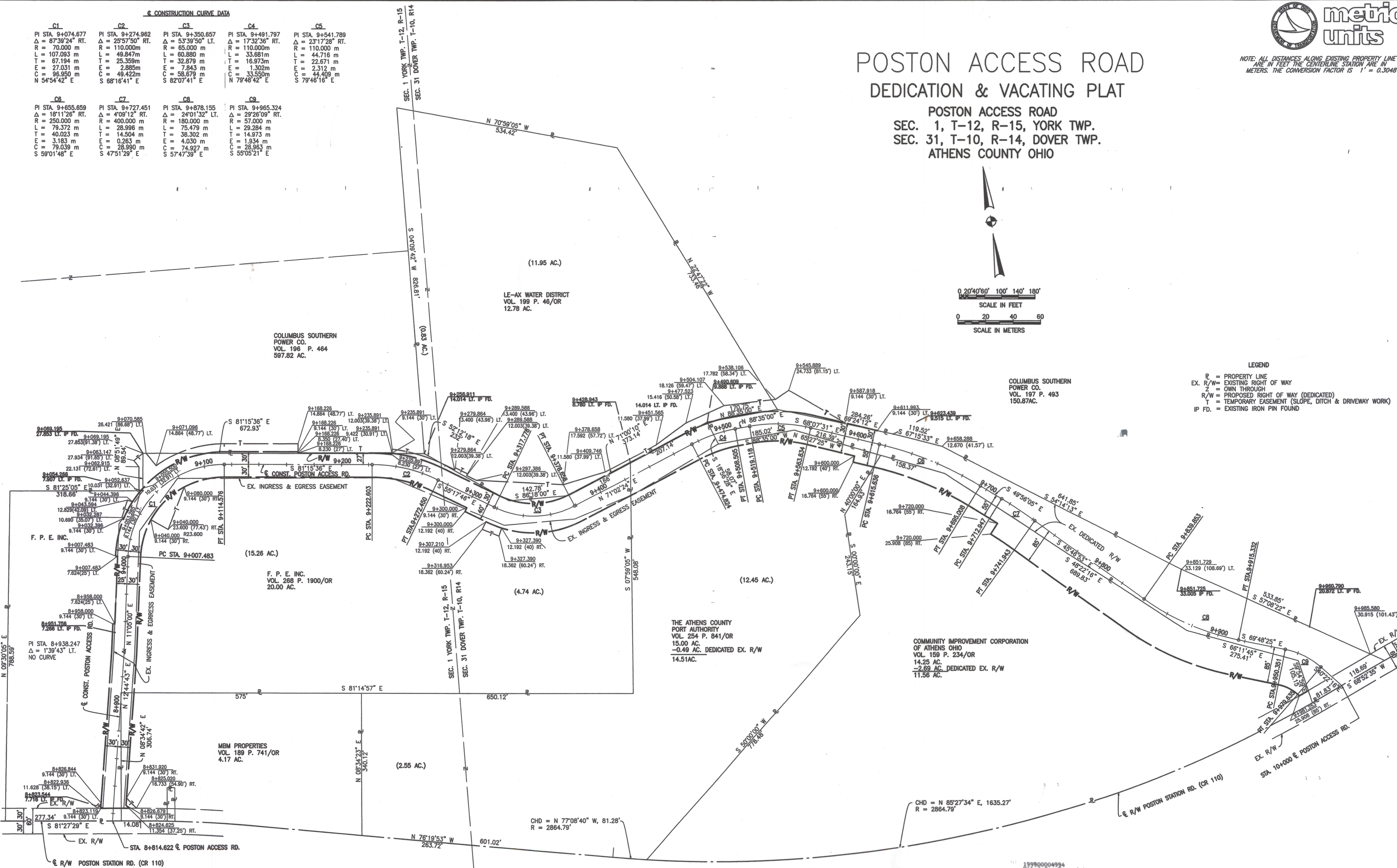
POSTON ACCESS ROAD DEDICATION & VACATING PLAT

POSTON ACCESS ROAD
SEC. 1, T-12, R-15, YORK TWP.
SEC. 31, T-10, R-14, DOVER TWP.
ATHENS COUNTY OHIO



CONSTRUCTION CURVE DATA

C1	C2	C3	C4	C5
PI STA. 9+074.677 Δ = 87°39'24" RT. R = 70.000 m L = 107.093 m T = 67.194 m E = 27.031 m C = 96.950 m N 54°54'42" E	PI STA. 9+274.962 Δ = 25°57'50" RT. R = 110.000m L = 49.847m T = 25.359m E = 2.885m C = 49.422m S 68°16'41" E	PI STA. 9+350.657 Δ = 53°39'50" LT. R = 65.000 m L = 60.880 m T = 32.879 m E = 7.843 m C = 58.679 m S 62°07'41" E	PI STA. 9+491.797 Δ = 17°32'36" RT. R = 110.000m L = 33.681m T = 16.973m E = 1.302m C = 33.550m N 79°48'42" E	PI STA. 9+541.789 Δ = 23°17'28" RT. R = 110.000 m L = 44.716 m T = 22.671 m E = 2.312 m C = 44.409 m S 79°46'16" E
C6	C7	C8	C9	
PI STA. 9+655.659 Δ = 18°11'26" RT. R = 250.000 m L = 79.372 m T = 40.023 m E = 3.183 m C = 79.039 m S 59°01'48" E	PI STA. 9+727.451 Δ = 4°09'12" RT. R = 400.000 m L = 28.996 m T = 14.504 m E = 0.263 m S 47°51'29" E	PI STA. 9+878.155 Δ = 24°01'32" LT. R = 180.000 m L = 75.479 m T = 36.302 m E = 4.030 m C = 74.927 m S 57°47'39" E	PI STA. 9+965.324 Δ = 29°26'09" RT. R = 57.000 m L = 29.284 m T = 14.973 m E = 1.934 m C = 28.963 m S 55°05'21" E	



LEGEND
 R = PROPERTY LINE
 EX. R/W = EXISTING RIGHT OF WAY
 Z = OWN THROUGH
 R/W = PROPOSED RIGHT OF WAY (DEDICATED)
 T = TEMPORARY EASEMENT (SLOPE, DITCH & DRIVEWAY WORK)
 IP FD. = EXISTING IRON PIN FOUND

970080ED.DWG DATE 11/23/98 DRAWN BY LVB/KH

199900004994
 Filed for Record in
 ATHENS COUNTY, OHIO
 JULIA MICHAEL SCOTT
 On 06-15-99 at 02:34 PM.
 PLAT 1999-06-15-00004994

POSTON ACCESS ROAD
 Sec 1 York Twp.
 Sec 31 Dover Twp.
 ENV 494 B