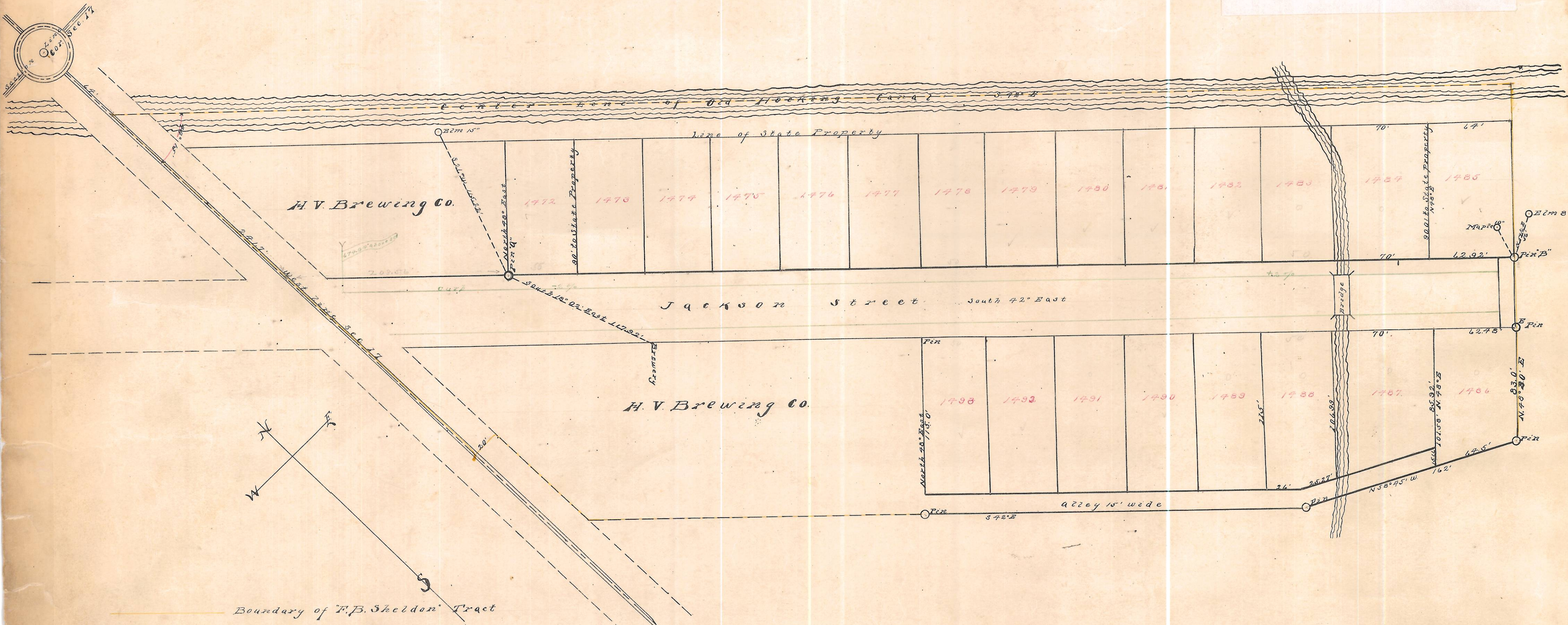


Map of Patton's Addition to the city of Nelsonville, Ohio

scale 1 inch = 50 feet.

ENVELOPE: 2A
PATTON'S ADDITION - NELSONVILLE



This Addition is located in the N.W. 1/4 of the N.W. 1/4 of Sec. 17, Tp. 12, Range 15, O.C.P. and consists of Lots 1472 to 1493 both numbers inclusive.

The "Base Line" of this Addition is a line 1529.92 ft. long extending from a pin marked "A", S. 42° E. to a pin marked "B" each on the property line on the North side of Jackson Street, which is an extension of same street in Jackson and Patton's Addition.

Pin "A" is S. 42° E. 208.56 ft. from a point in the Section Line 271.7 feet southward from the NW corner of said section 17 and witnessed by an Elm 15" in diameter N. 26° 03' E. 115.22 feet, also by N.W. cor. of Brewery Building S. 16° 02' E. 112.92 feet.

Pin "B" is witnessed 1st. by a Water Maple 10" in diameter N. 10° W. 18.6 ft. 2nd. by Red Elm 8" in diameter N. 59 1/2° E. 56 feet.

Jackson Street is 50 ft. wide and its north side is parallel to and 124 ft. the center line of Old Hocking Canal and makes an angle with the Section Line of 44° 15'. Lot lines, not marked, make 90° angles with street.

The lots between Jackson Street and the Canal are at least 90 ft. deep and run back to the line of the State property.

The alley in the rear of lots 1486 to 1493 is 15' wide.

The regular lots are 50 ft. wide, Lots 1488 to 1493 are 115 ft. deep

Nelsonville, Ohio, Aug. 8, 1905.

I hereby certify that the above is a correct representation of the streets, Lots and Alleys in Patton's Addition to Nelsonville, Ohio, as surveyed by me July 26-1905.

Emmett Keenan Surveyor.