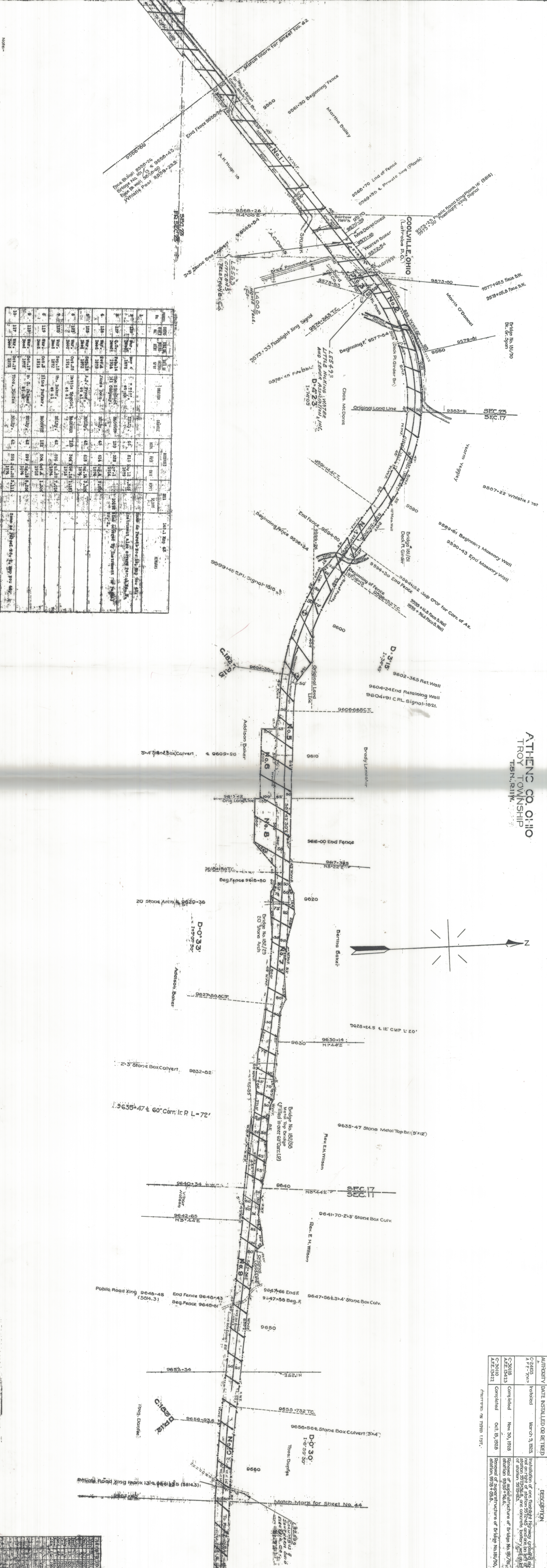


ATHENS CO. OHIO
TROY TOWNSHIP

AUTHORITY	DATE INSTALLED OR SET	DESCRIPTION
C-2403	March 3, 1923	Installation of one flashlight highway crossing on right of station 9572+45 and one on left of station 9572+50.
A.F.E. 13423	Nov. 30, 1926	Removal of superstructure of Bridge No. 187/90.
C-3010	Oct. 19, 1928	Removal of superstructure of Bridge No. 187/90.
A.F.E. 13422		Removal of superstructure of Bridge No. 187/90.

PREPARED BY THE BUREAU OF PUBLIC WORKS, BALTIMORE, MD.



STATION	DESCRIPTION	REMARKS
9560	Beginning of track	
9570	Bridge No. 187/90	
9580	Bridge No. 182/79	
9590	20 Stone Arch	
9600	20 Stone Arch	
9610	20 Stone Arch	
9620	20 Stone Arch	
9630	20 Stone Arch	
9640	20 Stone Arch	
9650	20 Stone Arch	
9660	20 Stone Arch	
9670	20 Stone Arch	
9680	20 Stone Arch	
9690	20 Stone Arch	
9700	20 Stone Arch	
9710	20 Stone Arch	
9720	20 Stone Arch	
9730	20 Stone Arch	
9740	20 Stone Arch	
9750	20 Stone Arch	
9760	20 Stone Arch	
9770	20 Stone Arch	
9780	20 Stone Arch	
9790	20 Stone Arch	
9800	20 Stone Arch	
9810	20 Stone Arch	
9820	20 Stone Arch	
9830	20 Stone Arch	
9840	20 Stone Arch	
9850	20 Stone Arch	
9860	20 Stone Arch	
9870	20 Stone Arch	
9880	20 Stone Arch	
9890	20 Stone Arch	
9900	20 Stone Arch	
9910	20 Stone Arch	
9920	20 Stone Arch	
9930	20 Stone Arch	
9940	20 Stone Arch	
9950	20 Stone Arch	
9960	20 Stone Arch	
9970	20 Stone Arch	
9980	20 Stone Arch	
9990	20 Stone Arch	
10000	20 Stone Arch	

Note: All chaining was done on the right hand rail and all distances and were measured from center line of track.

10-11-1931 (43)

RIGHT-OF-WAY AND TRACK WAS
THE BALTIMORE AND OHIO RAILROAD COMPANY
OPERATED BY
THE BALTIMORE AND OHIO RAILROAD COMPANY
OHIO NEWARK DIVISION
MAINTENANCE
SCALE 1" = 200 FT. JUN 20 1931
OFFICE OF THE BALTIMORE AND OHIO RAILROAD COMPANY
BALTIMORE, MD.

