

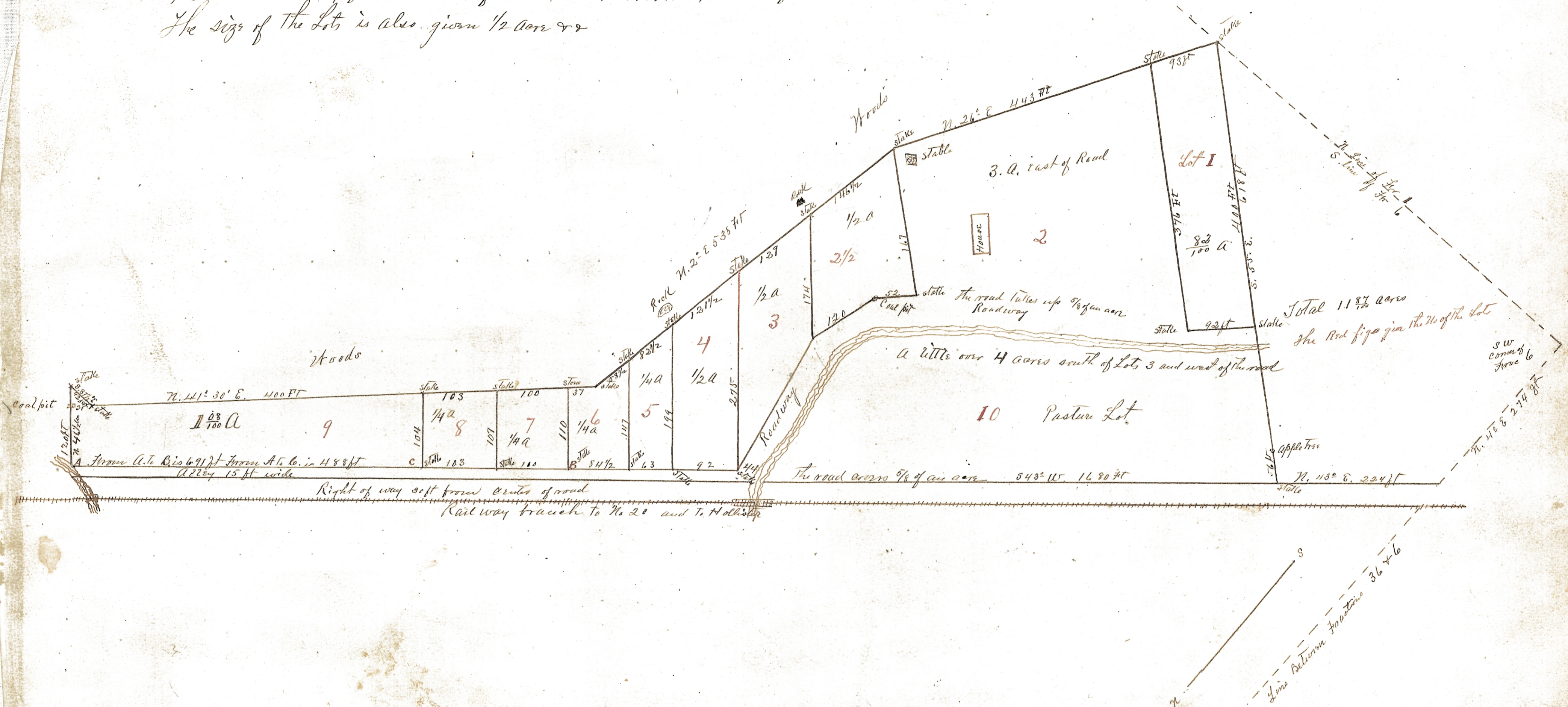
ENVELOPE: 144A

S. PEACH'S SUBDIVISION
FRACTION 6
TRIMBLE TWP

S. Peach's Subdivision of A. Part of Fraction 6, Tp 11, R. 14. Ohio Company's Purchase

Surveyed for S. Peach by R.W.
McFarland & J.A. Urmeton Aug 24th & 25, 1892

The Length of the lines is shown by the figs in black ink.
92 means 90 many feet. The lines of Lot 4 are 92, 199, 121 1/2 and 275 ft.
The size of the lots is also given 1/2 acre &c



Entered for record Nov. 5th 1892 at 1 P.M.
Recorded Nov 7th 1892

Attest C. L. Brent Recorder.