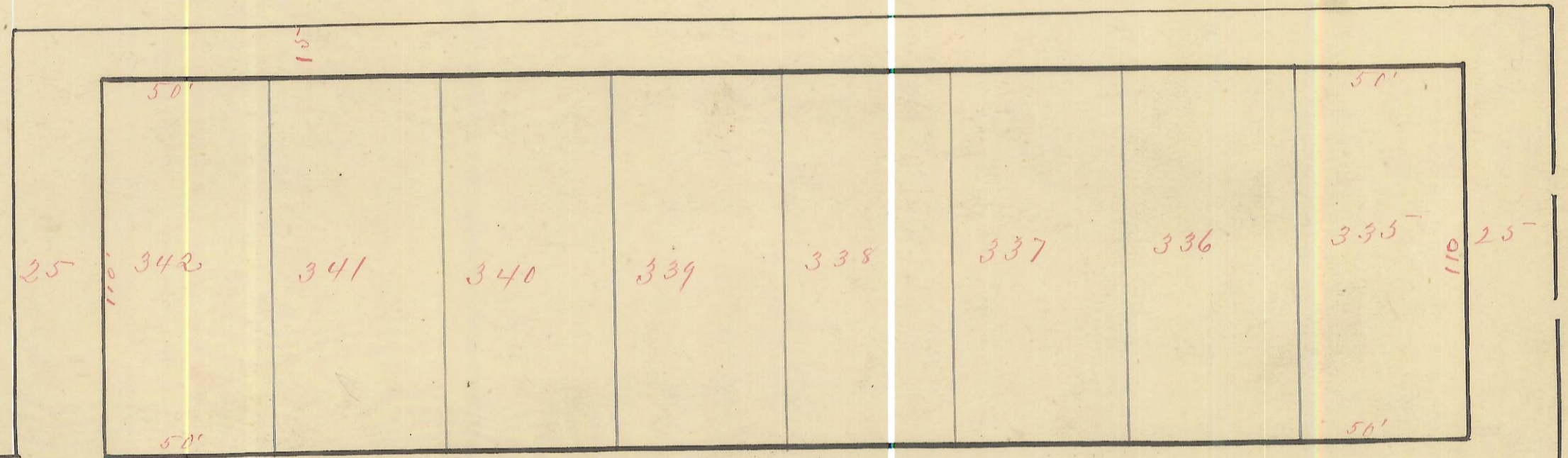


ENVELOPE: 118A
THOMAS G. WRIGHT'S ADDITION
SEDALIA

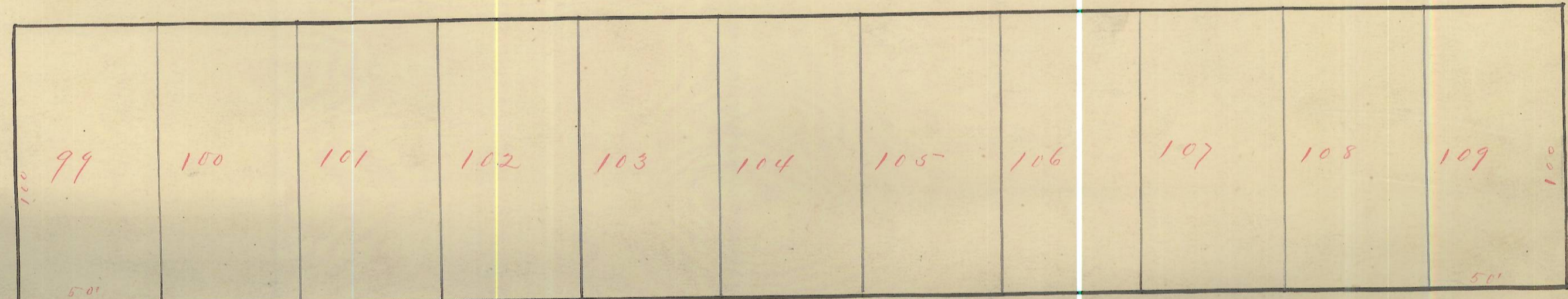
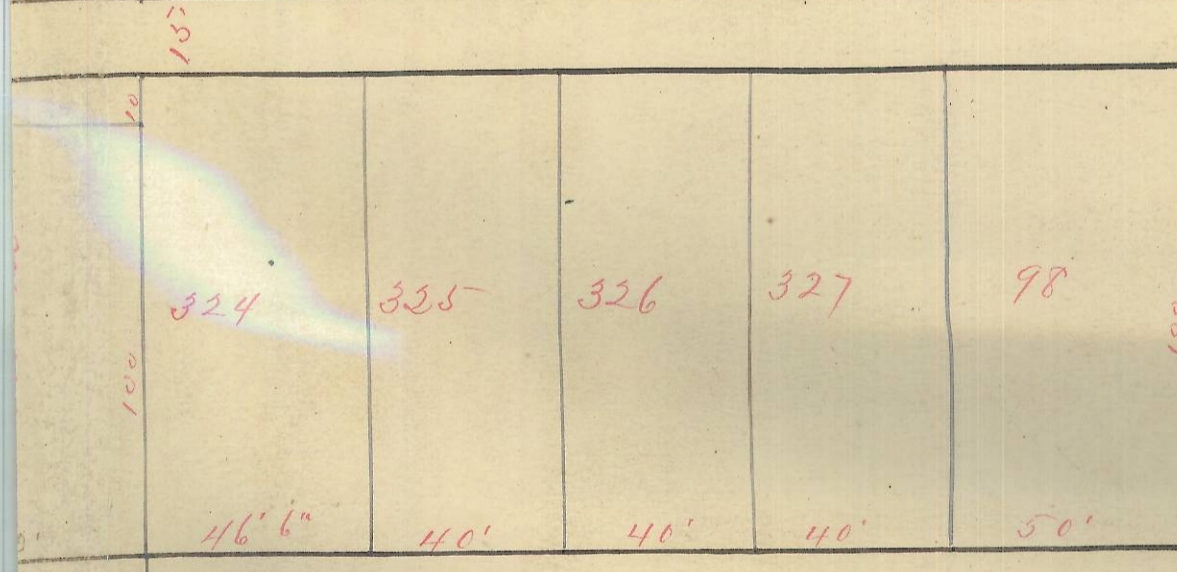
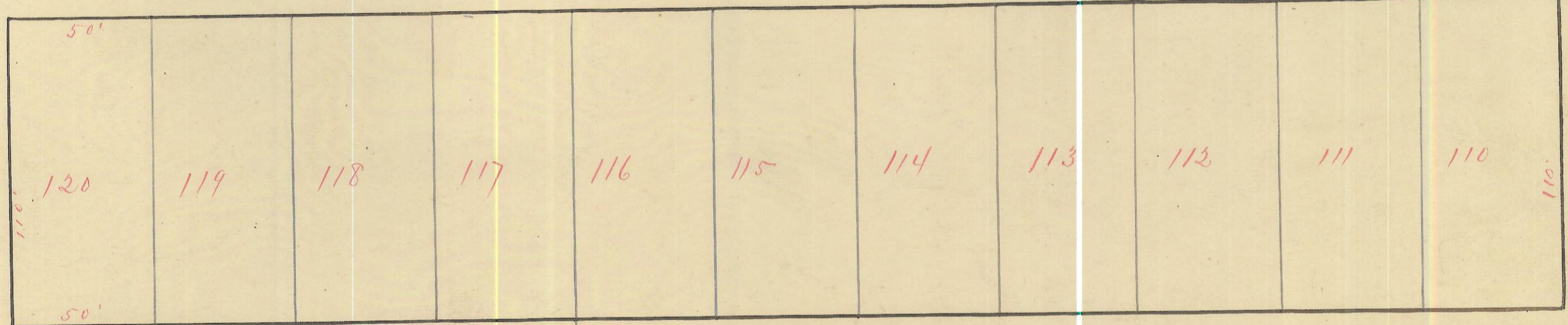
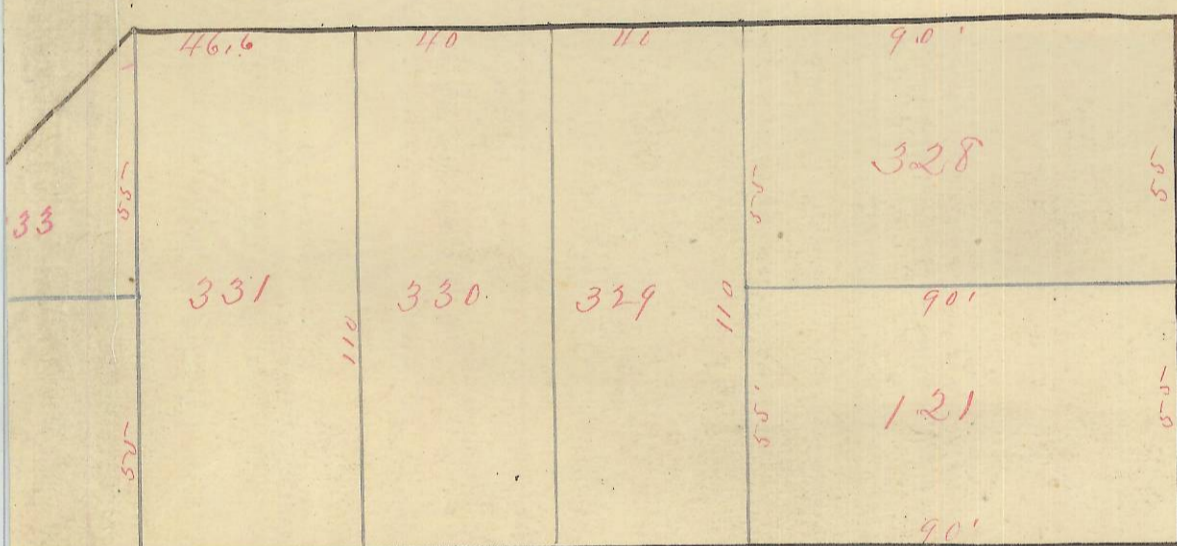
Thomas G. Wright's Addition to Sedalia Atwas Co Ohio By Will A. Hibbard County Surveyor.

This Plat includes the first & second Addition of said Wright to said Town
L. Hawk Recorder

Scale 40 ft = 1 inch



High St



Main St

Filed for record August 23rd 1887. Recorded same day. Attest L. Hawk Recorder.

100
100
100