

ENVELOPE: 277B
TRIMBLE HEIGHTS
SECTION 2
TRIMBLE TWP

PLAT OF TRIMBLE HEIGHTS

DESCRIPTION

BEING A PART OF SECTION 2 TRIMBLE TOWNSHIP
ATHENS COUNTY OHIO.

Beginning at an iron pin at the North East
corner of a 25.85 Acre tract recorded at Page
288 Volume 108 Athens County Record of Deeds.
thence South 49° 21' West 568.90 feet, thence South
59° 01' W 592.70 feet, thence South 22° 23' West 744.50
feet, thence South 85° 09' East 696.70 feet thence
north 20° 30' East 733.90 to a White Oak tree,
thence South 78° 45' East 216.30 feet thence North
4° 43' East 785.60 feet to the place of beginning.
containing 18.16 Acres more or less.

Al Johnson
Andrew Murphy
J. H. Grosvenor
Commissioners Athens County, Ohio.

Transferred May 19th 1924
County Auditor. Fred Cornwell.

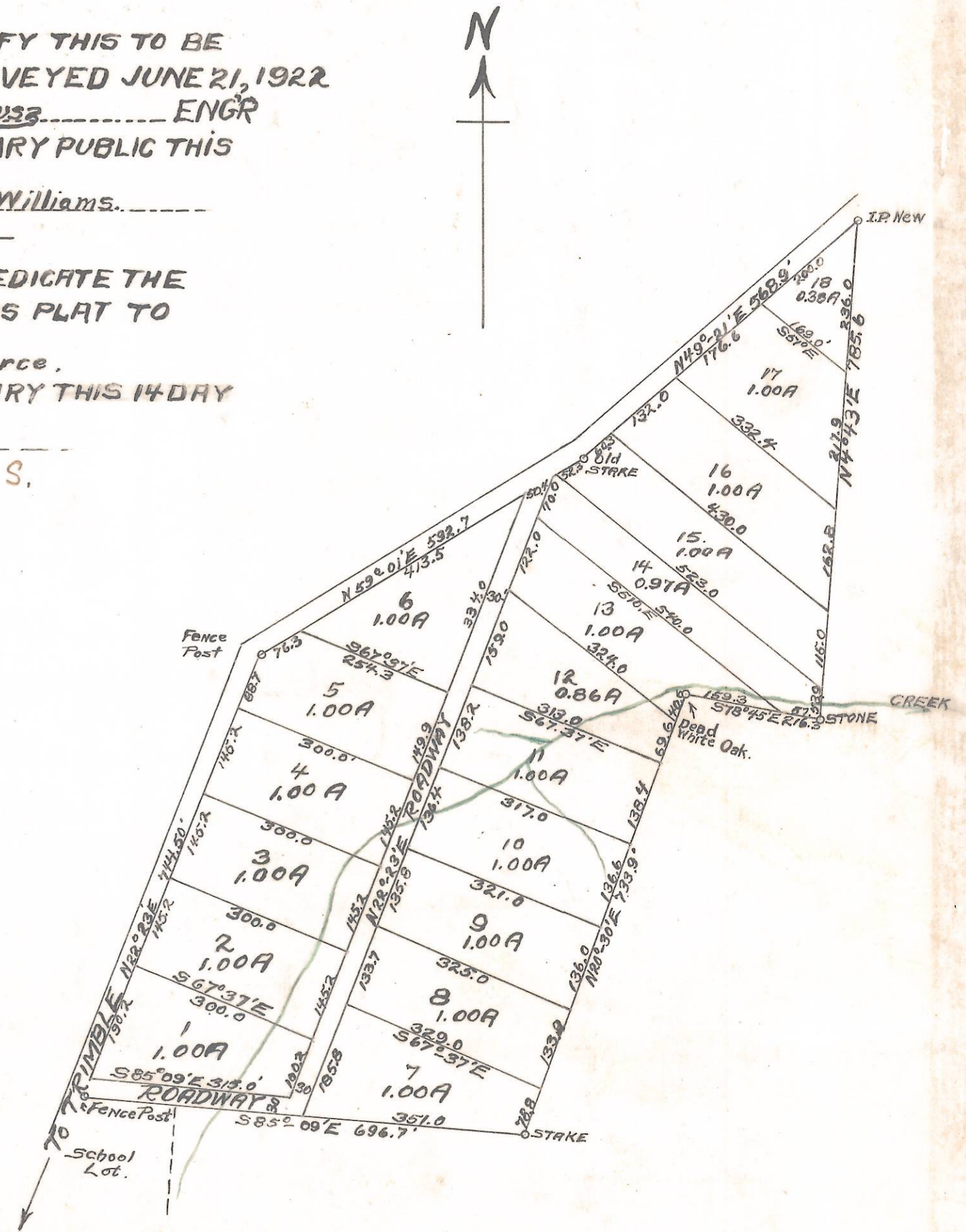
#22017
Received in Athens County, Ohio At 2:40 P.M.
May 27, 1924
Recorded June 19, 1924 Book 6 Page 158.
County Recorder Elyse M. Smith

18.16 TOTAL-ACRES
0.95 ACRES IN ROADWAY
17.21 ACRES IN LOTS.

SURVEYED 6-21-22
H.J. DUSZ, ENG.
SCALE 1"=200'

I THE UNDERSIGNED HEREBY CERTIFY THIS TO BE
A TRUE AND CORRECT MAP AS SURVEYED JUNE 21, 1922
H.J. Dusz ENGR
CERTIFIED TO BEFORE ME A NOTARY PUBLIC THIS
14 TH. DAY OF MAY 1924 Clarence D. Williams.

I MARY A. FIERCE ~~to~~ HEREBY DEDICATE THE
STREETS AND ALLEYS SHOWN ON THIS PLAT TO
PUBLIC USE FOREVER. Mary A. Fierce.
CERTIFIED TO BEFORE ME A NOTARY THIS 14 DAY
OF MAY 1924. E.A. Johnson L.S.



Replated June 19, 1924.
Manion C Morrison.