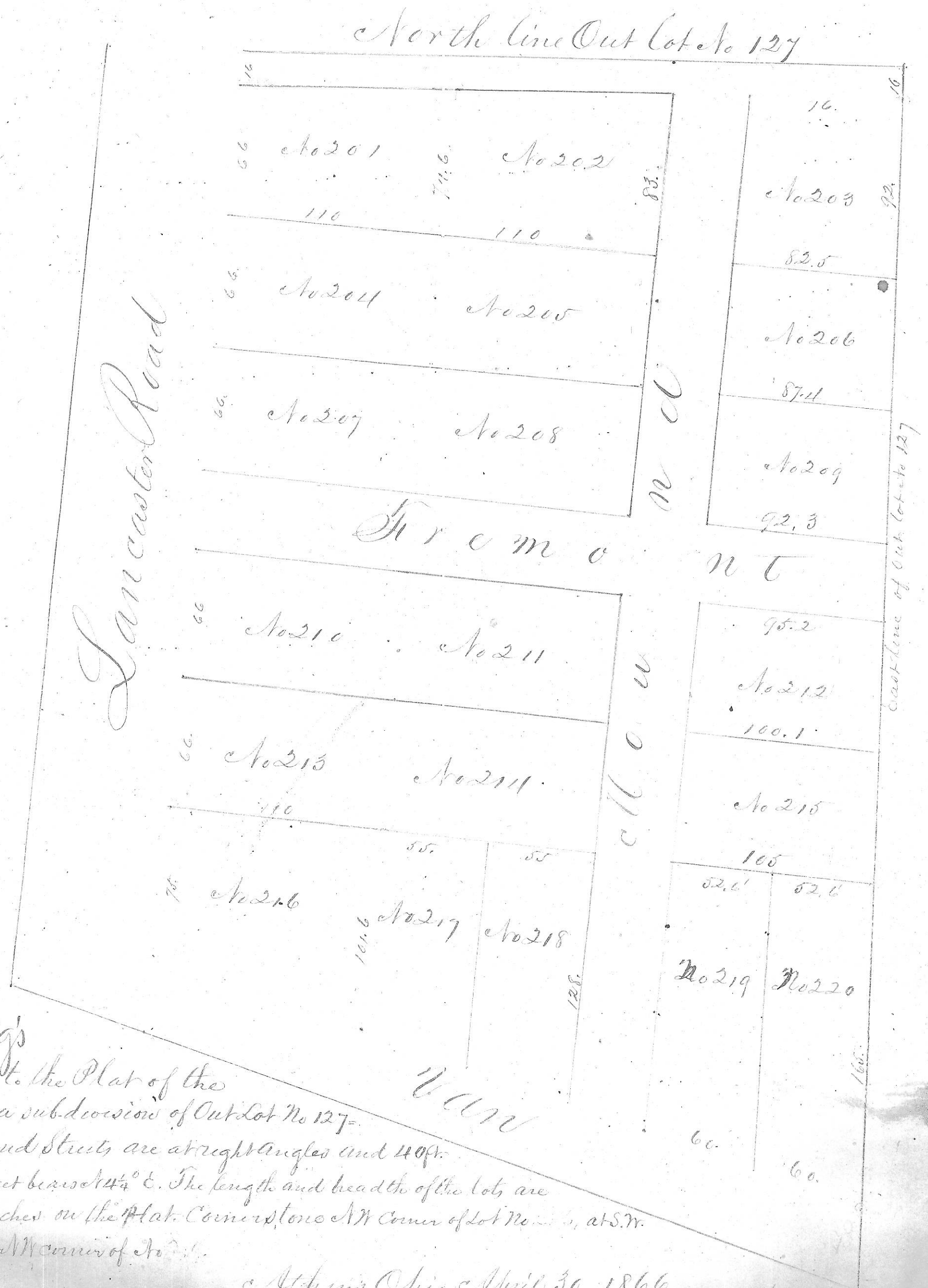


ENVELOPE: 82B

W.H. YOUNG'S ADDITION
ATHENS



W. H. Young's
 Addition to the Plat of the
 Town of Athens is a subdivision of Outlot No 127.
 Fremont and Elm Streets are at right angles and 40 ft.
 in width. Elm Street bears 14 1/2° E. The length and breadth of the lots are
 noted in feet and inches on the Plat. Corner Stone A at corner of Lot No. 201, at S.W.
 corner of Elm Street and at N.W. corner of No. 201.

Athens Ohio April 30. 1866

W. H. Young

I hereby certify that the above is a correct plat & description of a subdivision of Outlot No 127
 in Athens
 State of Ohio Athens County, etc.

E. Helmore Surveyor

and acknowledged the foregoing Plat this 30th day of April A.D. 1866
 Personally appeared before me the subscriber,

Henry D. Proctor Notary P.

Notarials Seal
 Athens County, O.

Entered and Recorded January 15th 1867

Daniel Drake, Rec. & C. C.
 By et al.