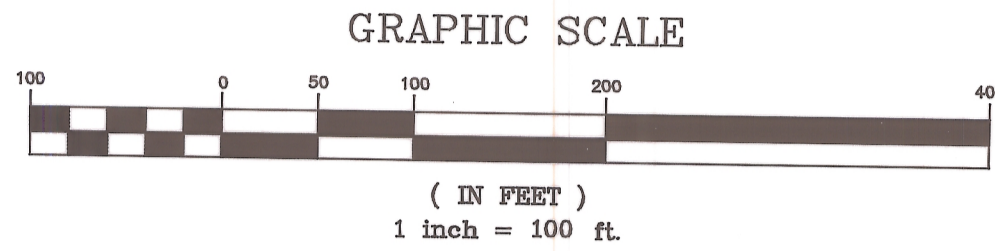
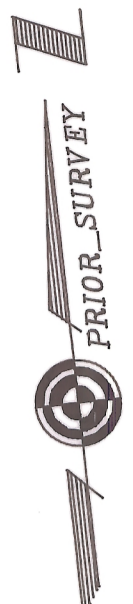


# Walden Woods Final Plat



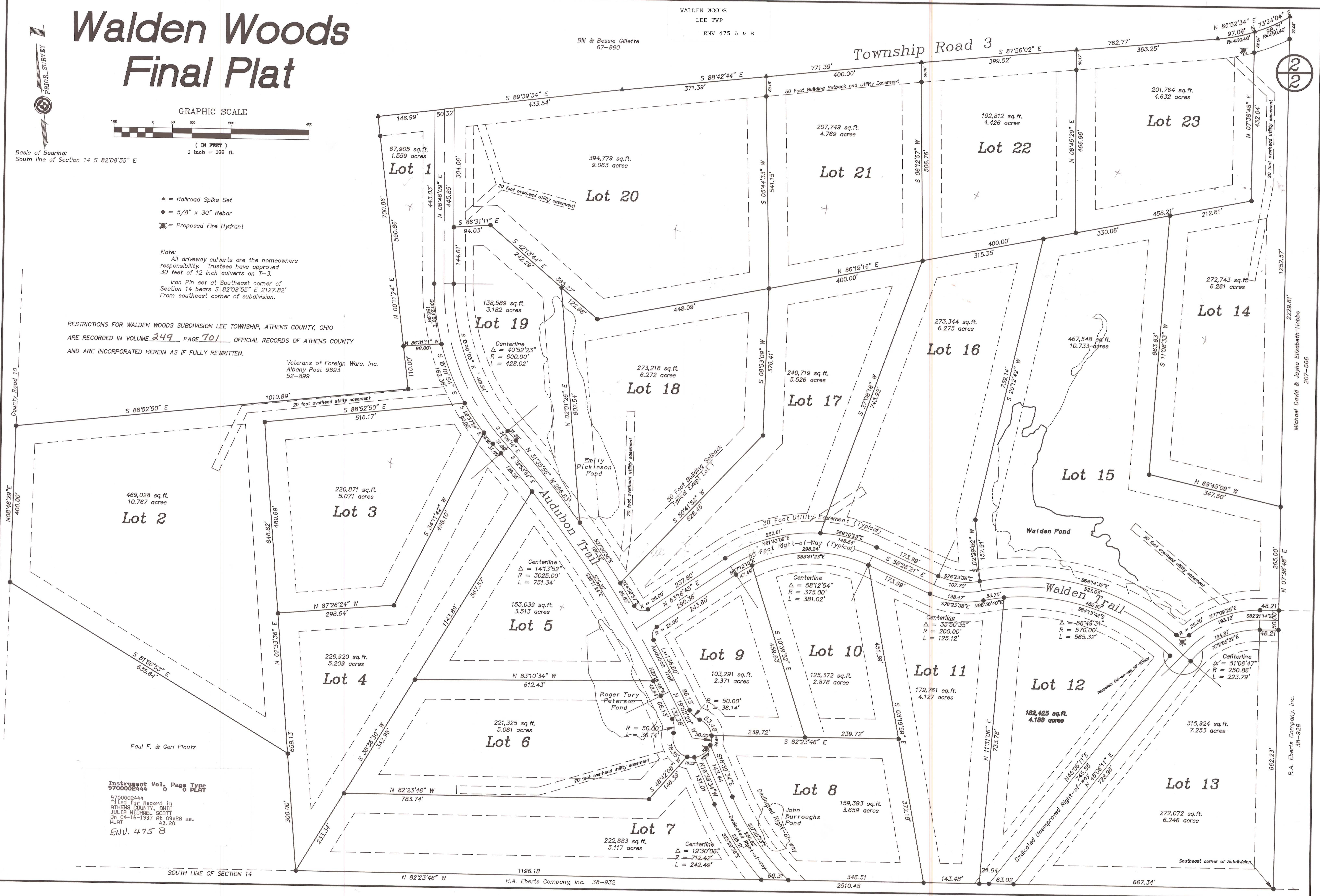
Basis of Bearing:  
South line of Section 14 S 82°08'55" E

- ▲ = Railroad Spike Set
- = 5/8" x 30" Rebar
- ⊗ = Proposed Fire Hydrant

Note:  
All driveway culverts are the homeowners responsibility. Trustees have approved 30 feet of 12 inch culverts on T-3.  
Iron Pin set at Southeast corner of Section 14 bears S 82°08'55" E 2127.82' From southeast corner of subdivision.

RESTRICTIONS FOR WALDEN WOODS SUBDIVISION LEE TOWNSHIP, ATHENS COUNTY, OHIO  
ARE RECORDED IN VOLUME 249 PAGE 701 OFFICIAL RECORDS OF ATHENS COUNTY  
AND ARE INCORPORATED HEREIN AS IF FULLY REWRITTEN.

Veterans of Foreign Wars, Inc.  
Albany Post 9893  
52-899



Instrument Vol. Page Type  
9700002444 0 PLAT  
9700002444  
Filed for Record in  
ATHENS COUNTY, OHIO  
JULIA MICHAEL SCOTT  
On 04-16-1997 At 09:28 am.  
PLAT 43,20  
ENU. 475 B