

EXHIBIT A

See declarations in OR 94 Pg 85

WOODMERE CONDOMINIUM - PHASE 5

ENVELOPE: 69B

WOODMERE CONDOMINIUM PHASE V  
FARM LOTS 123 & 166  
ATHENS TWP

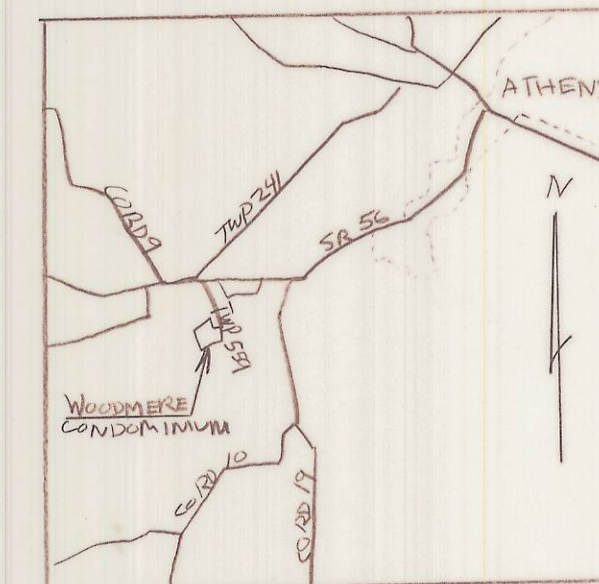


NORTH

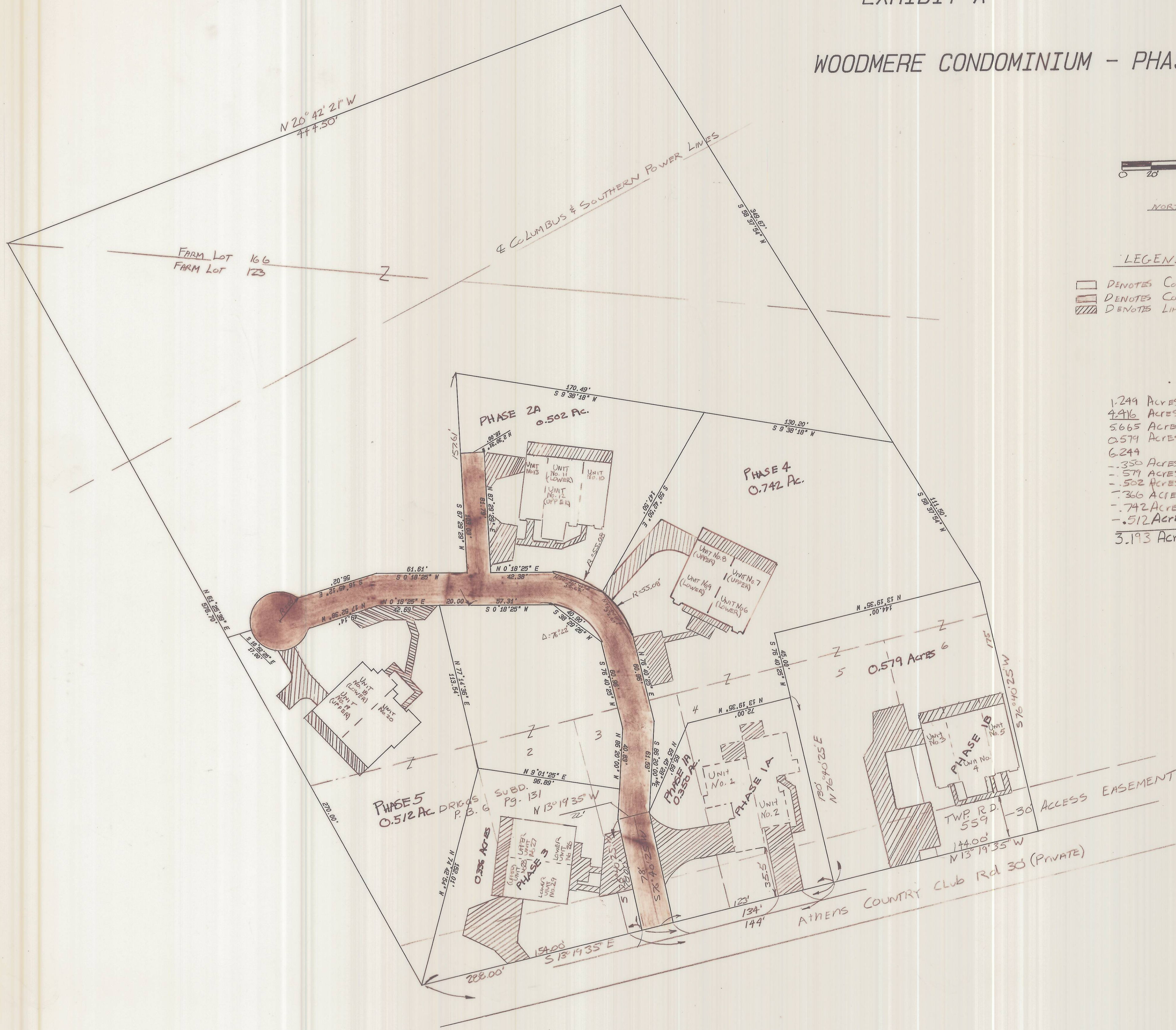
LEGEND-PHASE

- DENOTES COMMON AREA
- ▨ DENOTES COMMON AREA DRIVE
- ▩ DENOTES LIMITED COMMON AREA

1.249 ACRES IN FL. 166  
4.916 ACRES IN FL. 123 (INCLUDES LOTS 1-4)  
5.665 ACRES TOTAL  
0.579 ACRES IN FL. 123 (INCLUDES LOTS 5 & 6)  
6.244  
- .350 ACRES - PHASE 1A  
- .579 ACRES - PHASE 1B  
- .502 ACRES - PHASE 2A  
- .736 ACRES - PHASE 3  
- .742 ACRES - PHASE 4  
- .512 ACRES - PHASE 5  
3.193 ACRES REMAINING



LOCATION MAP



I HEREBY CERTIFY THAT THIS DRAWING ACCURATELY SHOWS THE BUILDING AND OTHER IMPROVEMENTS AS LOCATED AND AS CONSTRUCTED OR TO BE CONSTRUCTED AT WOODMERE CONDOMINIUM (PHASE 5) AND THAT THERE ARE NO ENCROACHMENTS ON ANY ADJUTING PREMISES.

*David J. Seeger*

DATE 3/27/91

1952

RECORDED 4-18-1991  
AT 3:15 O'CLOCK P.M.

VOL. PG.  
RECORD OF PLATS - ENCL. 69B

JULIA MICHAEL SCOTT RECORDER  
ATHENS COUNTY, OHIO

4320

PREPARED BY

SOUTHEASTERN LAND SURVEYS  
FOR RON STRICKMAKER