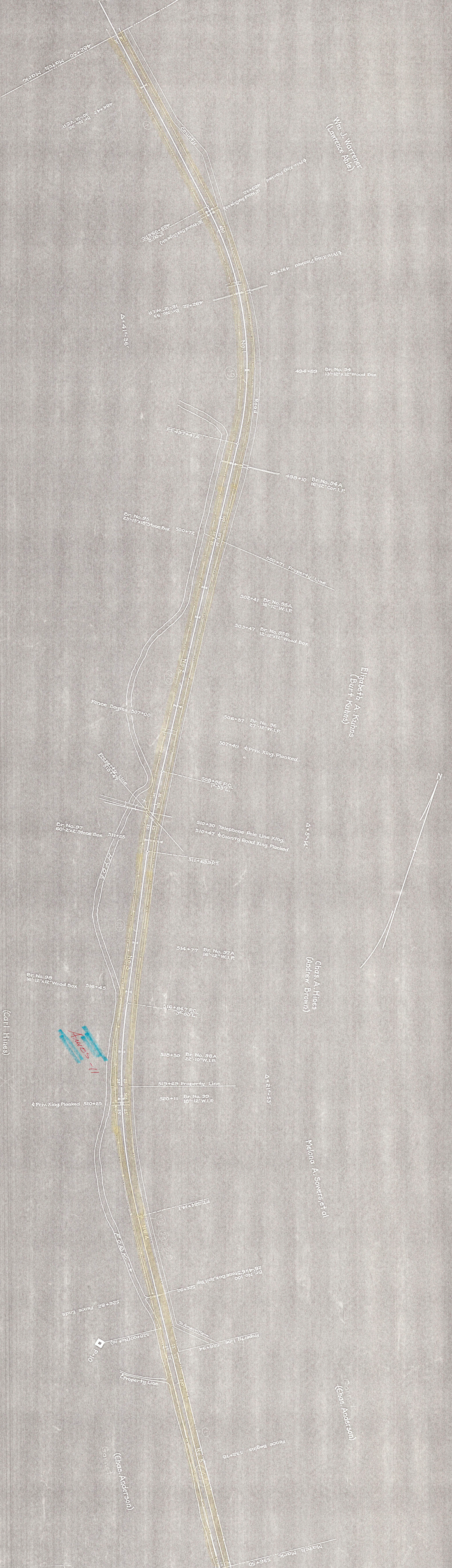


No.	Description	Date	By
1	Original	1930	W. J. Watterer
2	Revised	1930	W. J. Watterer
3	Revised	1930	W. J. Watterer
4	Revised	1930	W. J. Watterer
5	Revised	1930	W. J. Watterer



ATHENS COUNTY
AMES TOWNSHIP

SCALE 1/4" = 100 FEET
DATE OF SURVEY 1930

RIGHT OF WAY AND TRACK MAP
THE FEDERAL VALLEY RAILROAD
OPERATED BY
THE FEDERAL VALLEY RAILROAD COMPANY
MAIN LINE - FROM STATION 482+50 TO STATION 596+50
SCALE 1/4" = 100 FEET
JUNE 30, 1930
OFFICE OF CHIEF ENGINEER, COLUMBUS, OHIO

AMES
11

NO.	DATE	REVISION
1	1930	Original
2	1930	Revised
3	1930	Revised
4	1930	Revised
5	1930	Revised