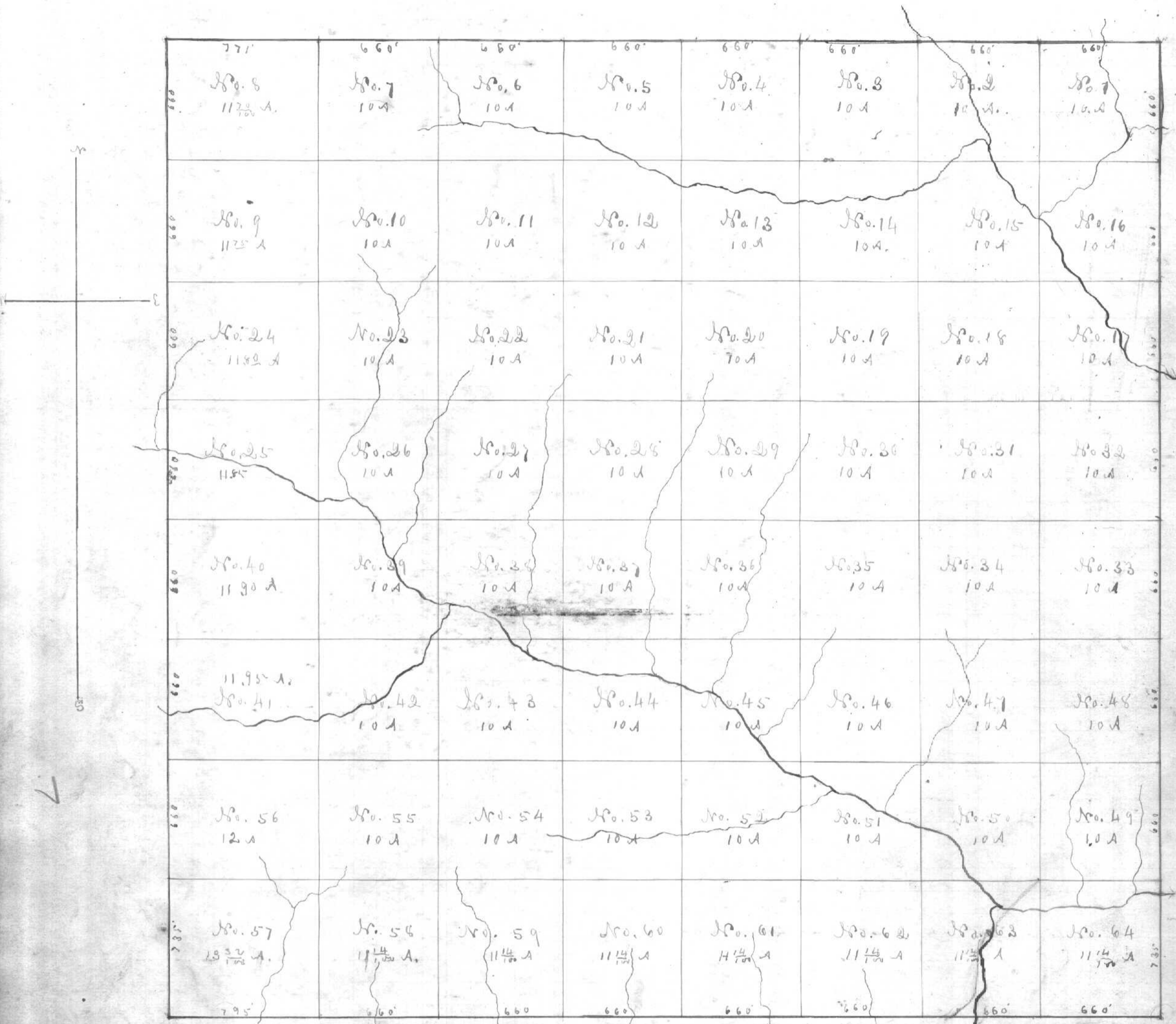


Subdivision of Section No. 36 Town No. 11 Range No. 15 Ohio Company's Purchase



Scale of 500 feet to 1 inch

Variation on the north and south line 3' 25" W  
 .. .. East line 3' 30" W  
 .. .. West .. 3' 34" W

- N. E. cor. of No. 1 Section corner - Stone planted
- N. W. .. .. 1 Stake west of road
- N. W. .. .. 2 N.W. corner of a house S 38 1/2 E 28'
- N. W. .. .. 3 Stake set for corner
- N. W. .. .. 4 Stone 55 1/2 East and 11 1/2 South of corner set for center of Sec. 31 T. 12 R. 15
- N. W. .. .. 5 Stone corner
- N. W. .. .. 6 Poplar 6' S 45 E 11 1/2 Chestnut 5' S 32 1/2 W 14'
- N. W. .. .. 7 White 0.12 S 9 1/2 E 20' Poplar 5' S 45 W 13'
- N. W. .. .. 8 Black 0.11 S 44 1/2 E 25' Black 0.12 S 63 E 32'
- N. W. .. .. 9 White 0.24 N 72 W 25' Hickory 20' S 74 W 34'
- N. W. .. .. 10 Stone set for corner - in a field
- N. W. .. .. 11 Hick. 5' West 3' gum 16' N 6 W 21'
- N. W. .. .. 12 Gum 10' S 41 E 16' White 0.18 S 14 W 22'
- N. W. .. .. 13 Sour gum 5' S 63 E 4 1/2 White 0.14 N 8 E 14' 8"
- N. W. .. .. 14 Beech 10' N 36 E 12' Beech 10' N 6 W -
- N. W. .. .. 15 S. E. corner of a house West 35 1/2
- N. W. .. .. 16 White 0.5' S 44 1/2 W 15 1/2 Hick. 10' N 75 1/2 W 29'
- N. E. .. .. 17 do do 12' S 52 1/2 W 14 1/4 White 0.12 S 6 W 10'
- N. E. .. .. 18 Stake set for corner
- N. W. .. .. 19 Stone .. ..

- N. W. 18 Stone set for corner
- N. W. 19 Dogwood 5' N 72 E 17 1/2 Hickory 6' S 75 1/2 W 28'
- N. W. 20 Hick. 10' S 63 1/2 E 4 1/2 Beech 4' S 85 E 4'
- N. W. 21 Poplar 18' S 33 E 20' - only one tree taken
- N. W. 22 Black 0.12 S 26 E - Black 0.10 S 45 E -
- N. W. 23 Quaker oak 11' S 20 E 16' Poplar 8' S 40 W 12'
- N. W. 24 White 0.9' N 66 E 12' Black 0.11 N 85 W 18'
- N. W. 25 Black 0.12 S 40 E 30' - one tree
- N. W. 26 Poplar 6' N 75 E 12' Black 0.5' S 20 E 8'
- N. W. 27 Black 0.10 N 37 1/2 E 28' White 0.28 S 11 E 23'
- N. W. 28 White 0.26 S 5 E 4 1/2 - Poplar 20' S 51 1/2 W 43'
- N. W. 29 Poplar 3' N 31 1/2 W 18' one tree
- N. W. 30 Iron stake
- N. W. 31 Black Wal. 16' S 7 1/2 E 53' .. ..
- N. W. 32 White 0.10' S 20 1/2 W 15' White 0.11' N 63 E 33'
- N. E. .. Elm 12' N 80 W 2' one tree
- N. E. 33 Stake 33 North of center
- N. W. .. Chestnut 5' N 70 E 9 1/2 - Chestnut stump 14' S 37 1/2 W 15 1/2
- N. W. 34 Black Wal. 7' S 57 E 64' Stone set
- N. W. 35 Black 0.16' N 60 W 15' Black 0.8' S 20 W 15'