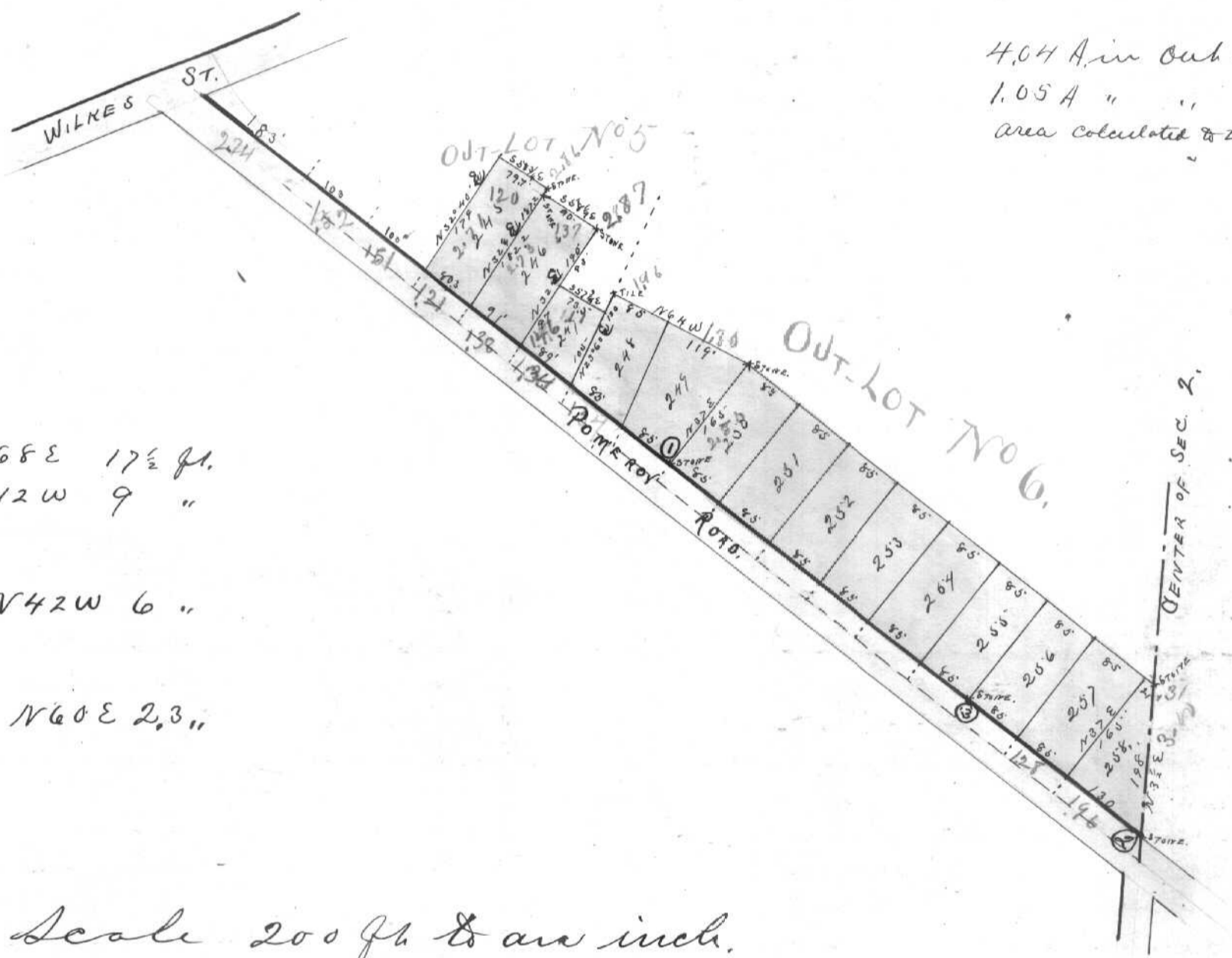


No 328.

IN THE VILLAGE OF ALBANY

LEE Twp.

Plot of
G.W. Hill's Addition
to the
Village of Albany
Ohio.



4.04 A. in Out Lot. No 6.
1.05 A " " " No 5.
Area calculated to the center of Road.

① { Maple 12" S68E 17 1/2 ft.
Cherry 10" N12W 9 "

② { Sugar 6" N42W 6 "

③ Sugar 4" N60E 2,3 "

Scale 200 ft to an inch.

Steel tape measurement.

Bearings corrected to the true Meridian.

William A. Maxey } asst.
Geo. W. Hill

Surveyed Sept. 27 1890.

Recorded Oct. 9 1890.

W. E. Peters
County Surveyor