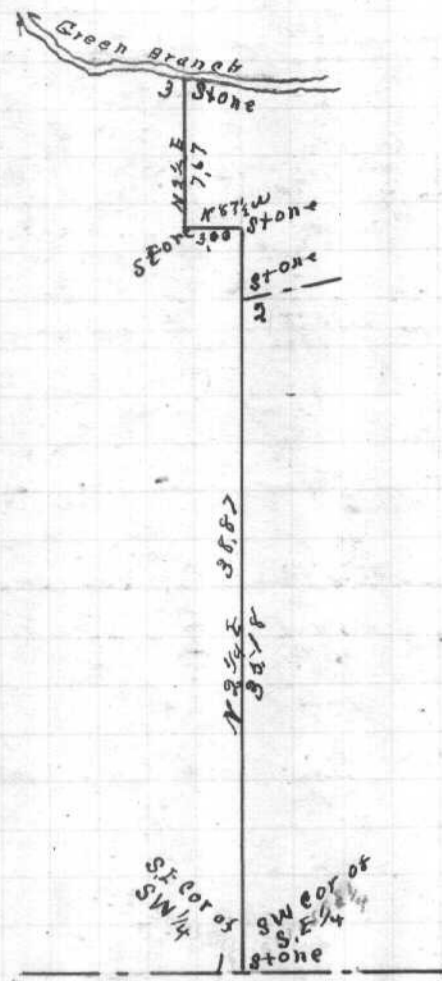


Jerry Beans Survey in Sec N^o 30 Town N^o 5 Range N^o 12

CARTHAGE TWP.



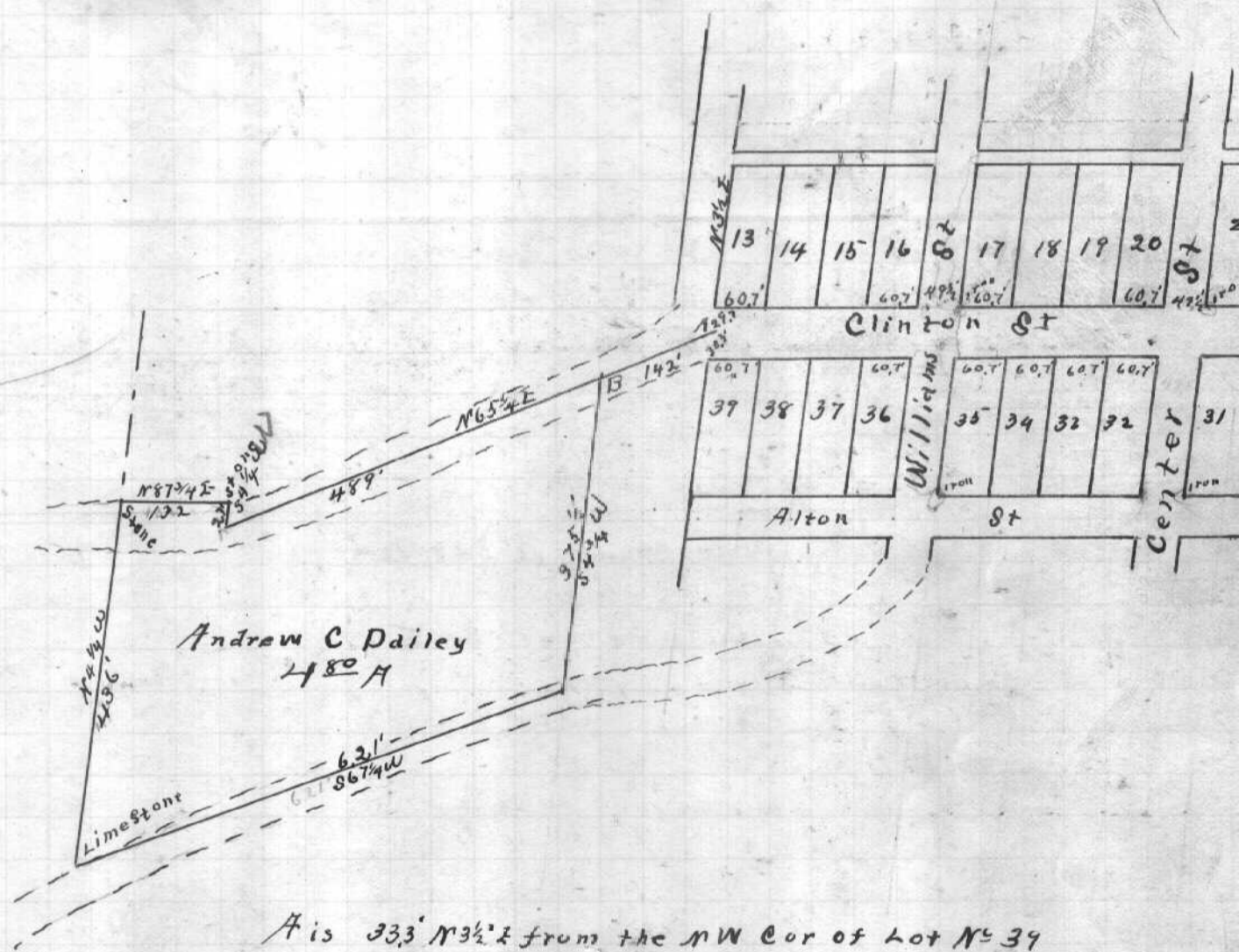
- 1) W.O. 20" N 63 3/4 W. 35' old tree
- 2) Hick 16" S 30 W. 09 1/2
- Rock 20" S 16 1/2 E. 28 1/2
- 3) Mulberry 14" S 54 1/4 E. 50

Scale of 10 chains to an inch

Surveyed July 12th 1904
Recorded Sept 29th 1905

S. H. Hibbard
Surveyor of Athens Co.

A. C. Dailey's Survey in Albany Town N^o 10 Range N^o 15 LEE TWP.



A is 333' N 3 1/2 E from the NW cor of Lot N^o 39
B Lime Stone 84 3/4 W 14.5'

Scale of 200 feet to an inch

Surveyed July 25th 1905
Recorded Sept 30th 1905

S. H. Hibbard
Surveyor of Athens Co.