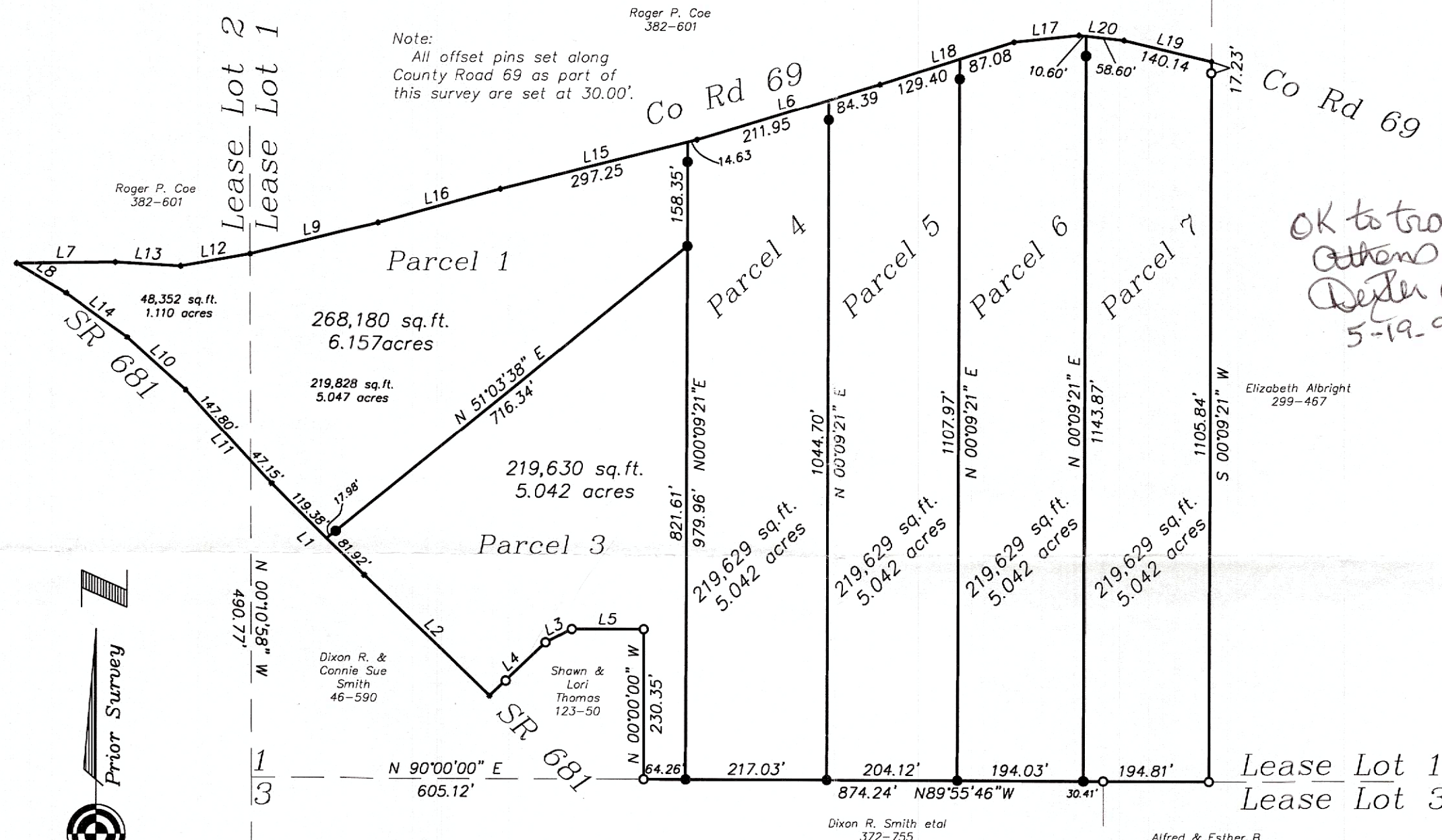


"Approved by the Athens County Regional Planning Commission; No plat Required"

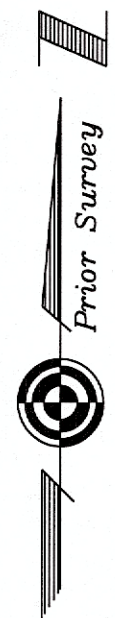
*S. Blouss*  
 Date: 5/14/98  
 Planning Director

**Gregory K. Wright**  
 Professional Engineer  
 Professional Surveyor  
 11684 Channingway Blvd  
 The Plains, Ohio 45780  
 740-797-4142  
 FAX 740-797-8623



*OK to transfer all 7 parcels  
 Athens City Co Health Dept  
 Dexter Conrad RS  
 5-19-98*

- = Point
- = Iron Pin Found
- = Iron Pin Set



Description checked for Mathematical Accuracy  
 ATHENS COUNTY ENGINEER'S OFFICE  
 BY: *S. Blouss*  
 DATE: 5-8-98

**Plat of Survey of 31.367 Acres Into 6 Parcels**  
 Situated in Section 25, Lease Lot 1 and 2,  
 Town 8, Range 14, Alexander Township  
 Athens County, Ohio  
 Surveyed April 1998 for:  
 Harry Reeves



*Gregory K. Wright*  
 Gregory K. Wright

LINE TABLE		
LINE	LENGTH	BEARING
L1	201.30	N44°45'55"W
L2	269.18	N46°26'17"W
L3	44.98	S62°47'54"W
L4	119.53	S46°38'26"W
L5	111.03	S89°57'38"W
L6	296.34	N73°17'34"E
L7	153.71	N89°15'11"E
L8	89.49	N59°35'41"W
L9	201.57	N76°06'17"E
L10	120.39	N48°19'28"W
L11	194.95	N42°37'43"W
L12	108.51	N80°04'32"E
L13	100.67	S86°50'31"E
L14	116.62	N54°28'27"W
L15	311.88	N75°59'09"E
L16	197.44	N74°48'58"E
L17	101.08	N83°55'00"E
L18	216.48	N72°34'10"E
L19	140.14	S76°49'12"E
L20	69.20	S83°48'55"E

