



SOUTHEASTERN LAND SURVEYS

LEONARD F. SWOYER
REGISTERED PROFESSIONAL LAND SURVEYOR

3428 Pleasant Hill Road
Athens, Ohio 45701
614/593-8701

Situated in the northwest quarter of Section 1, Lease Lot 3, Town 8, Range 14, Alexander Township, Athens County, Ohio and described as follows:

Commencing at the northeast corner of Lease Lot 3 of Section 2 Alexander Township and the southeast corner of Lease Lot 1 of said Section 2 Alexander Township and on the west line of Lease Lot 4; thence along the west line of Lease Lot 4 and the east line of Lease Lot 3 South 00 degrees 37 minutes 12 seconds West, a distance of 1065.85 feet to a point in the center of Athens County Road 17 and THE TRUE POINT OF BEGINNING; thence continuing South 00 degrees 37 minutes 12 seconds West distance of 523.68 feet to a set iron pin (witness a found stone South 00 degrees 37 minutes 12 seconds West 78.36 feet the southwest corner of a 32.13 acre tract described in Volume 33 Page 279 of the Athens County Official Deed Records); thence leaving the east line of Lease Lot 3 and the west line of aforesaid 32.13 acre tract South 67 degrees 10 minutes 09 seconds West, a distance of 136.90 feet to a set iron pin; thence continuing South 67 degrees 10 minutes 09 seconds West along said line, a distance of 108.40 feet to a set iron pin; thence South 62 degrees 28 minutes 12 seconds West, a distance of 64.01 feet to a set iron pin; thence South 75 degrees 08 minutes 51 seconds West (passing a set iron pin at 295.84 feet) for a total distance of 352.90 feet to a point in the center of Athens County Road 17; thence along Athens County Road 17 the following ten courses and distances:

1. North 48 degrees 03 minutes 27 seconds East, a distance of 38.83 feet to a point; thence
2. North 48 degrees 41 minutes 39 seconds East, a distance of 227.41 feet to a point; thence
3. North 46 degrees 44 minutes 53 seconds East, a distance of 234.40 feet to a point; thence
4. North 43 degrees 36 minutes 20 seconds East, a distance of 96.80 feet to a point; thence

*Alex
Twp.
Sect 1*

PROPERTY

CONSTRUCTION

Donna McLeme
1-23-97 SUBDIVISIONS

116

5. North 40 degrees 40 minutes 17 seconds East, a distance of 192.26 feet to a point; thence
6. North 34 degrees 56 minutes 00 seconds East, a distance of 54.09 feet to a point; thence
7. North 26 degrees 54 minutes 35 seconds East, a distance of 39.79 feet to a point; thence
8. North 15 degrees 38 minutes 15 seconds East, a distance of 53.15 feet to a point; thence
9. North 04 degrees 07 minutes 28 seconds East, a distance of 14.09 feet to a point; thence
10. North 03 degrees 52 minutes 35 seconds East, a distance of 41.31 feet to the point of beginning and containing 2.8770 acres, and being a part of the second tract described in Volume 5 Page 815 of the Athens County Official Deed Records.

Note: Unless otherwise noted, all set iron pins are 5/8 inch diameter rebar and 30 inches in length and capped with a plastic identification marker inscribed L.F. Swoyer R.L.S. 6765.

The above description was prepared under the supervision of Leonard F. Swoyer Professional Land Surveyor Number 6765 and based on a survey performed by Southeastern Land Surveys dated January 16, 1997.
Subject to all easements and right of ways of record.

117



SOUTHEASTERN LAND SURVEYS

LEONARD F. SWOYER
REGISTERED PROFESSIONAL LAND SURVEYOR

3428 Pleasant Hill Road
Athens, Ohio 45701
614/593-8701

LINE	BEARING	DISTANCE
L 1	S 62°28'12"W	64.01'
L 2	N 48°03'27"E	38.83'
L 3	N 34°56'00"E	54.09'
L 4	N 26°54'35"E	39.79'
L 5	N 15°38'15"E	53.15'
L 6	N 04°07'28"E	14.09'
L 7	N 03°52'35"E	41.31'

- IRON PIN FOUND
- IRON PIN SET
- STONE FOUND

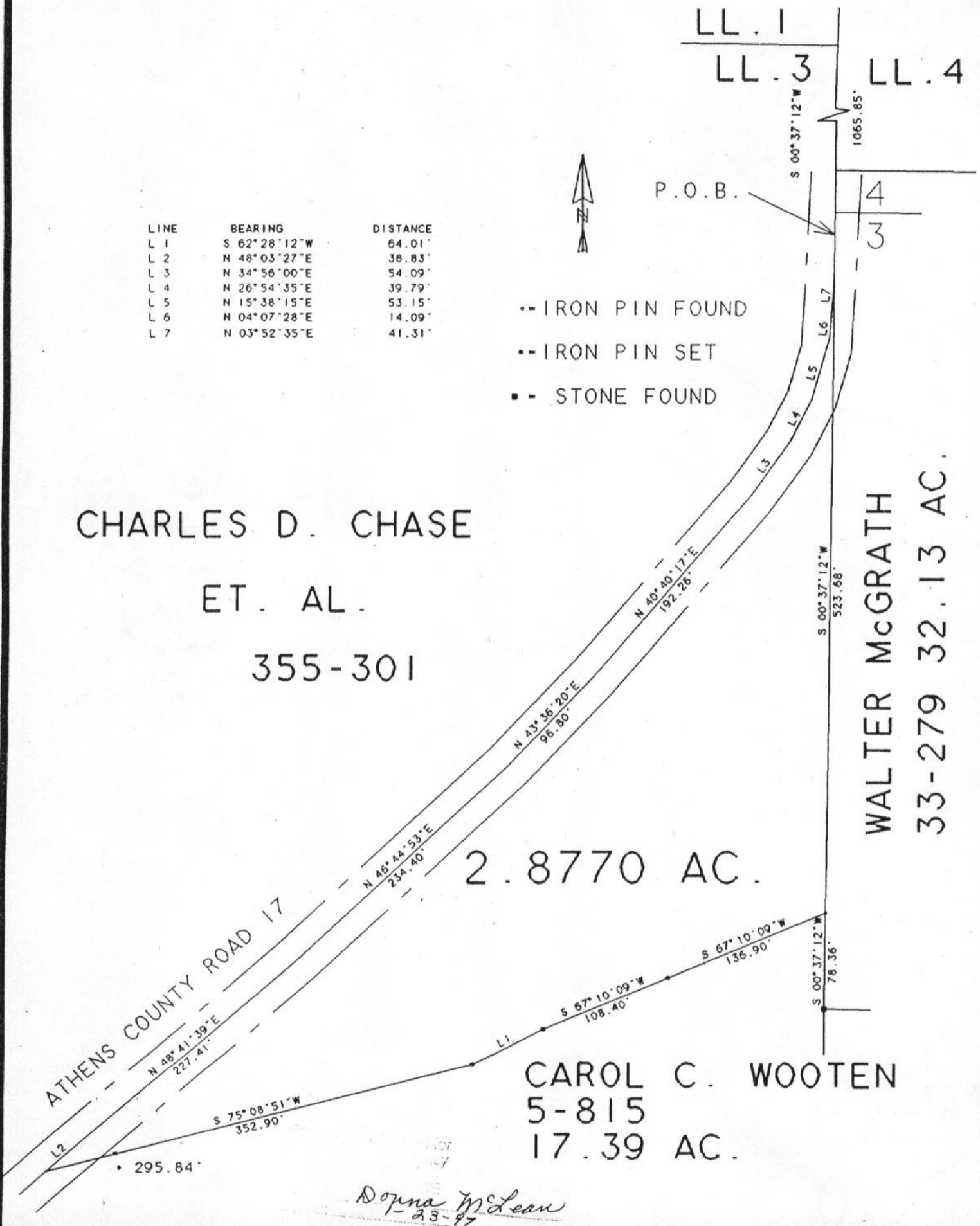
CHARLES D. CHASE
ET. AL.
355-301

WALTER McGRATH
33-279 32.13 AC.

2.8770 AC.

CAROL C. WOOTEN
5-815
17.39 AC.

Doyna McLean
1-23-97



Plat of 2.8770 Acres Scale 1" = 100'

Surveyed for Carol Willoughby Date Jan 21, 1997

Subdivision Lease Lot 3

Township Alexander Section 1 Town 8 Range 14

Corporation ----- County Athens State Ohio

Leonard F. Swoyer Jr.
Leonard F. Swoyer Jr. Reg. Prof. Land Surveyor No. 6765

118