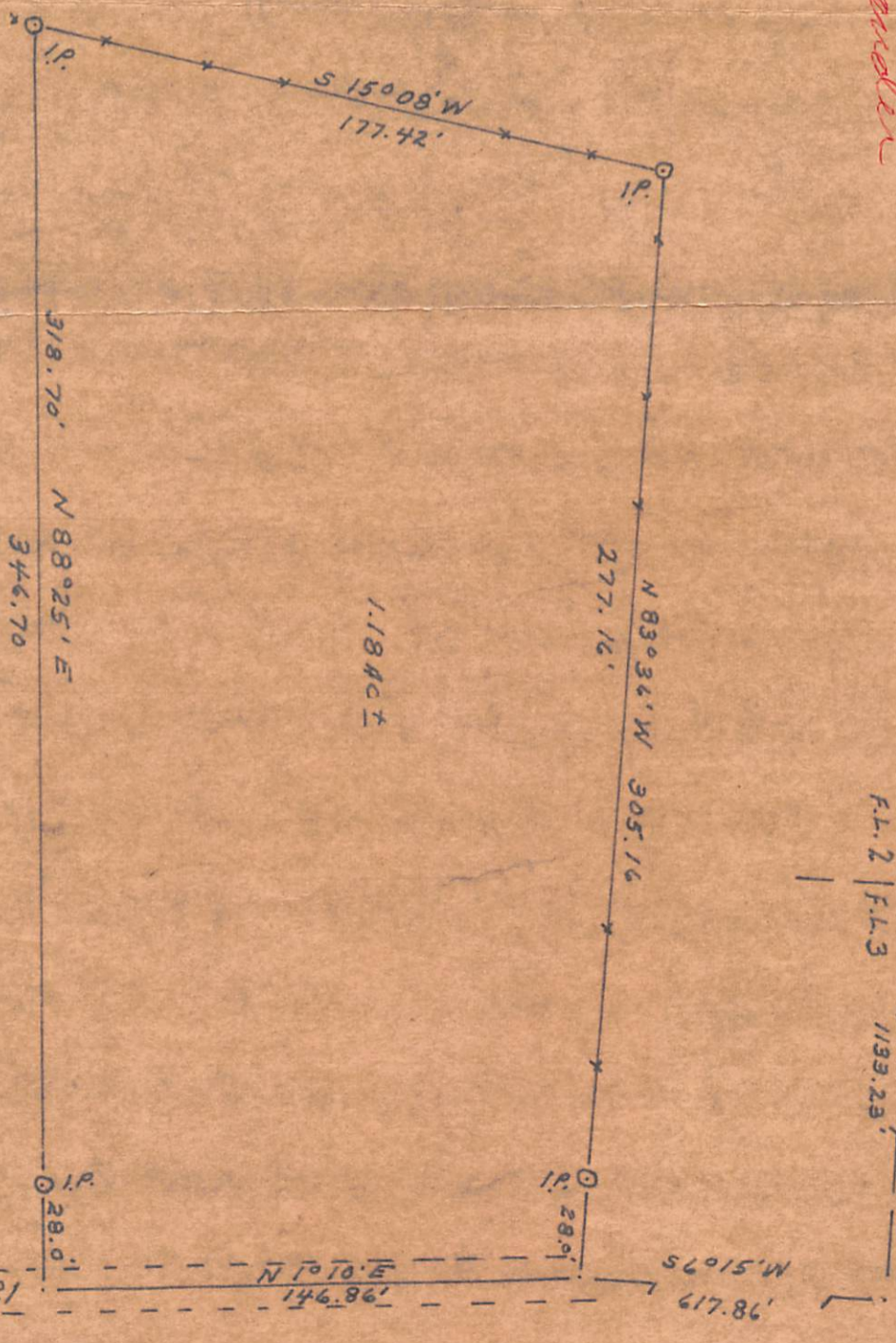
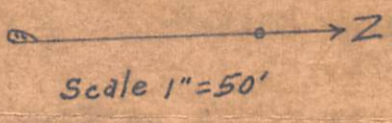


Sec 11 & 12
A. Alexander

PLAT

of a part of F.L. 317
 Sections 11 & 12 T.8, R.14
 Ohio University Leasehold Lands

Surveyed for Carl Clifford
 8-8-67 by Joe S. Galvin
 Reg. Sur. 1684



Clifford Enterprises Inc. 276-1112

CO. HWY 21

ALEX - 11 + 12 SE

1. 18 Ac

