

**BRANNER SURVEYING
12500 N. PEACH RIDGE ROAD
ATHENS, OHIO 45701**

DESCRIPTION OF A 15.004 ACRE TRACT

Situated in Farm-lot #1, Section 32. T.8, R.14, Alexander Township, Athens County, Ohio and being more particularly described as follows:

Beginning at Grantor's South-east corner and being a fence corner bearing North 01 degrees 55 minutes 27 seconds East, 85.14 feet from a stone found at the South-west corner of Farm-lot #1

Thence, along Grantor's South-line North 89 degrees 34 minutes 58 seconds West, 647.97 feet to a point in the right of way of State Route 681;

Thence, North 17 degrees 28 minutes 34 seconds West, 415.97 feet to an iron pin set, passing an iron pin set at 28.70 feet;

Thence, North 38 degrees 43 minutes 48 seconds East, 98.43 feet to an iron pin set;

Thence, North 12 degrees 35 minutes 32 seconds West, 199.43 feet to an iron pin set;

Thence, North 35 degrees 59 minutes 46 seconds East, 314.68 feet to an iron pin set;

Thence, South 86 degrees 00 minutes 44 seconds East, 601.03 feet to an iron pin set in Grantor's East-line,

Thence, along said line South 01 degrees 55 minutes 27 seconds West, 886.20 feet to the point of beginning and containing 15.004 acres.

Bearings are used to denote interior angles only.

Subject to all easements and rights of way of record.

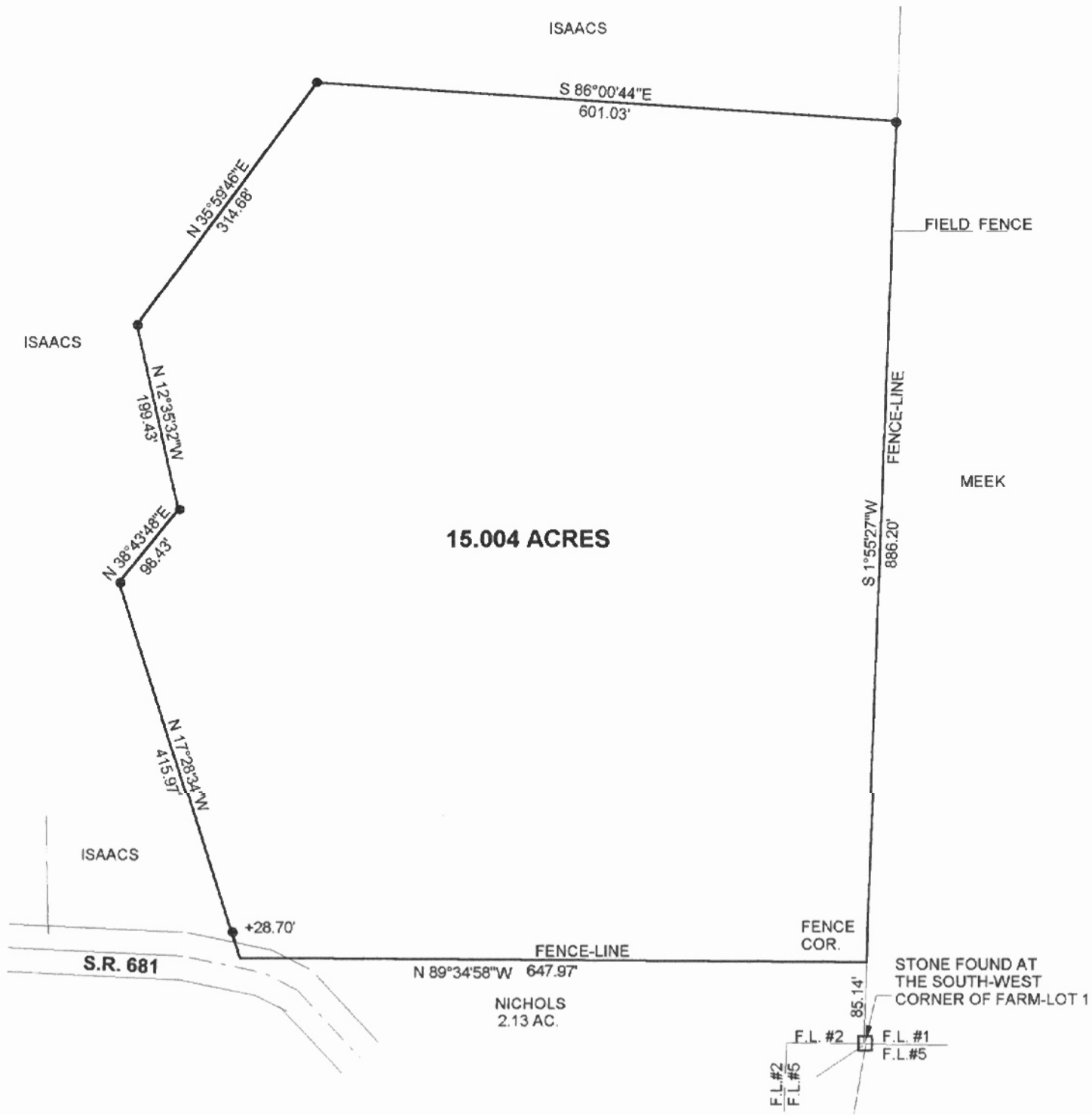
The above description is based on a field survey by John M. Branner P.S. 6805 completed August 2002.

John M. Branner

Description checked for
Mathematical Accuracy
ATHENS COUNTY
ENGINEER'S OFFICE
BY: S. Blausch
DATE: 10-24-02

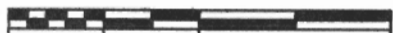
10

ALX#32



**SURVEY OF A 15.004 ACRE TRACT
IN F.L. #2, SECTION 32, T.8, R.14,
ALEXANDER TOWNSHIP
ATHENS COUNTY, OHIO
SURVEYED OCTOBER 2002**

BY: *John M. Branner*
**JOHN M. BRANNER P.S. 6805
12500 N. PEACH RIDGE ROAD
ATHENS, OHIO 45701
(740) 592-5778**



SCALE 1 INCH = 150 FEET
● = IRON PIN SET (5/8"x30" rebar)
BEARINGS ARE TO BE
USED TO DENOTE INTERIOR
ANGLE ONLY

Description checked for
Mathematical Accuracy
ATHENS COUNTY
ENGINEER'S OFFICE
BY: *S. Blause*
DATE: 10-24-02



11

Point	Direction	Distance	Northing	Easting	Elevation
Database opened: Thursday, October 24, 2002 11:08 am.					
Assigned point					
1			5000.00000	5000.00000	0.000
Start					
1			5000.00000	5000.00000	0.000
Raw:	n89.3458w	647.97			
TR	N 89°34'58.0" W	647.970			
2			5004.71841	4352.04718	0.000
Raw:	n17.2834w	415.97			
TR	N 17°28'34.0" W	415.970			
3			5401.48817	4227.12801	0.000
Raw:	n38.4348e	98.43			
TR	N 38°43'48.0" E	98.430			
4			5478.27370	4288.71085	0.000
Raw:	n12.3532w	199.43			
TR	N 12°35'32.0" W	199.430			
5			5672.90668	4245.23297	0.000
Raw:	n35.5946e	314.68			
TR	N 35°59'46.0" E	314.680			
6			5927.50071	4430.17995	0.000
Raw:	s86.0044e	601.03			
TR	S 86°00'44.0" E	601.030			
7			5885.70287	5029.75480	0.000
Raw:	s01.5527w	886.20			
TR	S 1°55'27.0" W	886.200			
8			5000.00256	4999.99910	0.000
IN	S 19°17'21.6" E	0.003			
1			5000.00000	5000.00000	0.000

Area = 653557.026 Sq. Feet or 15.004 Acres

Database Saved: Thursday, October 24, 2002 11:13 am.

12