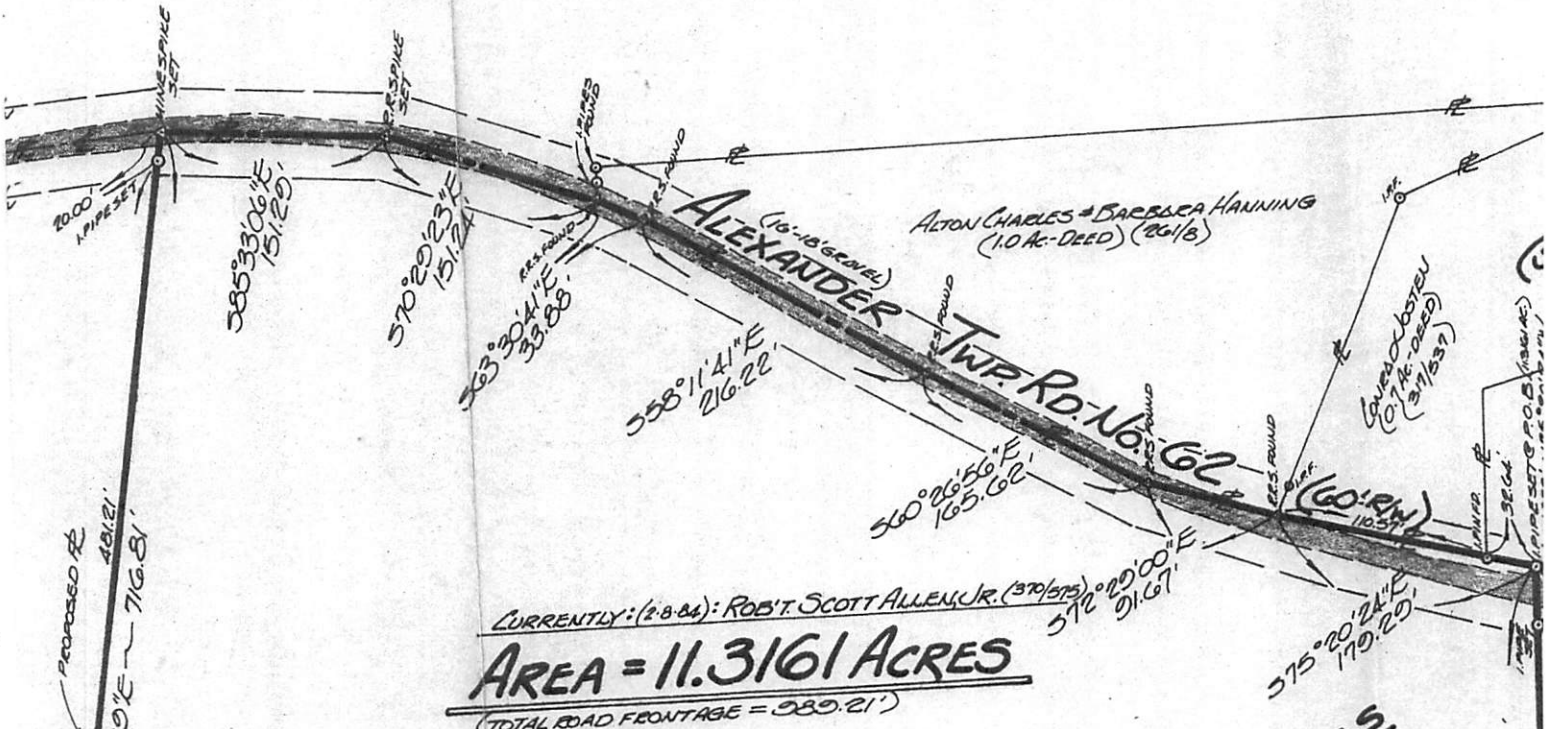
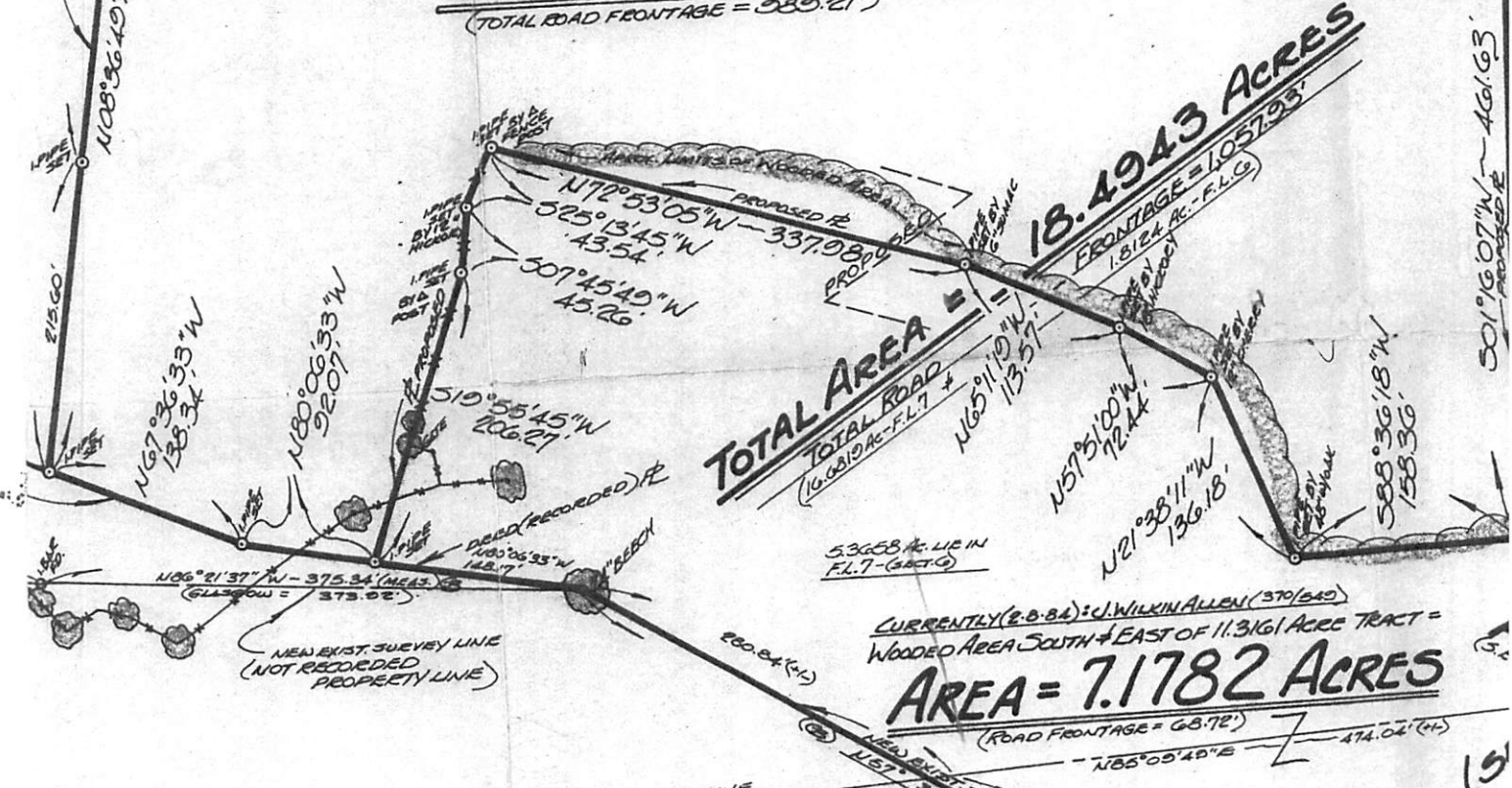


PETER G. + SHARON KOUSALEAS
(30 Ac.) (282/560)



CURRENTLY (2-8-84): ROBT. SCOTT ALLEN JR. (370/575)
AREA = 11.3161 ACRES
(TOTAL ROAD FRONTAGE = 583.21')



CURRENTLY (2-8-84): J. WILKIN ALLEN (370/640)
WOODED AREA SOUTH + EAST OF 11.3161 ACRE TRACT =
AREA = 7.1782 ACRES
(ROAD FRONTAGE = 68.72')

JOSIAH B. ALLEN (179/100)
7.6 (SECT. 6)

1,812 AC. LIES IN
F.L.G. (SECT. 6)

530.6 (+/-)
831.44 (MEAS.)
(CALCULATED = 834.01)
DEED = 13064-2580

53658 AC. LIE IN
F.L. 7 - (SECT. 6)

F.L. LINE

9