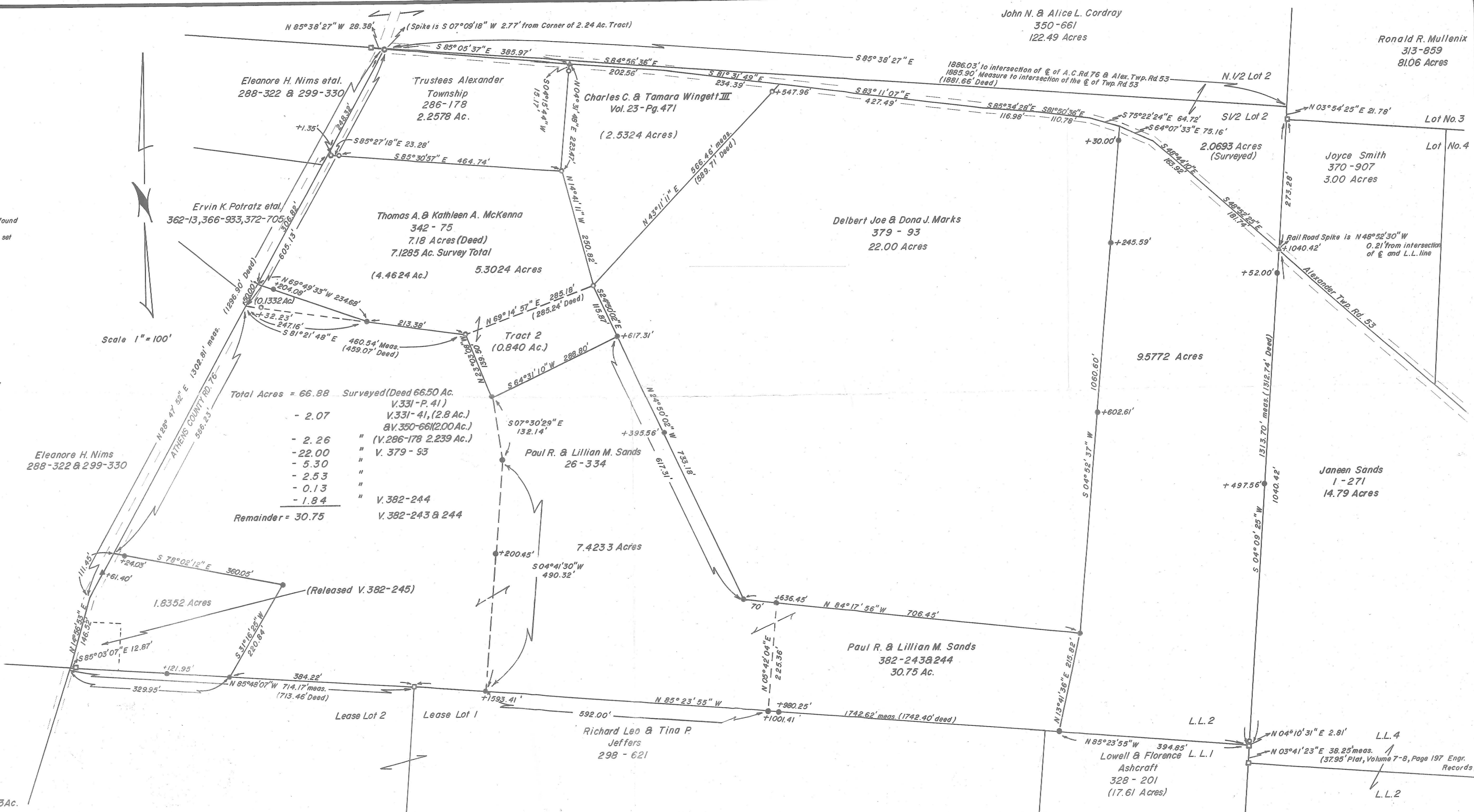


Plat of Survey of 66.8801 Acres and a division of 3 Tracts. Tract 1 = 22.009 Acres, Tract 2 = 0.8404 Acres, Tract 3 = 1.00 Acres. Located in the South 1/2 of Lease Lot 2, Section 22, Town 8, Range 14, Ohio University Leasehold Lands, Athens County, Ohio.

Prepared by
SOUTHEASTERN LAND SURVEYS
 For Paul R. & Lillian M. Sands
 June 25, 1984.
Leonard F. Swayer II
 Leonard F. Swayer II Reg. Surv. No. 6765

- Revised August 30, 1984 to survey out 2.5324 Acres
- Revised September 10, 1984 to survey out 0.1857 Acres
- Revised September 27, 1984 to survey out 1.8352 Acres
- Revised July 2, 1985 to survey out 7.4233 Acres
- Revised May 22, 1987 to survey out 9.5772 Acres

Donald & Meta Marie Van Nostran
 340 - 35
 Note: P.R.S. 0.13Ac.



Total Acres = 66.88	Surveyed (Deed 66.50 Ac.)
- 2.07	V.331-P.41
- 2.26	V.331-41, (2.8 Ac.)
- 22.00	& V.350-66(2.00 Ac.)
- 5.30	(V.286-178 2.239 Ac.)
- 2.53	"
- 0.13	"
- 1.84	"
Remainder = 30.75	V.382-244
	V.382-243 & 244

Scale 1" = 100'

Eleanor H. Nims
 288-322 & 299-330

Paul R. & Lillian M. Sands
 26-334

Paul R. & Lillian M. Sands
 382-243 & 244
 30.75 Ac.

Richard Leo & Tina P.
 Jeffers
 298 - 621

Lowell & Florence L.L.1
 Ashcraft
 328 - 201
 (17.61 Acres)

Janeen Sands
 1-271
 14.79 Acres

Joyce Smith
 370-907
 3.00 Acres

Delbert Joe & Dona J. Marks
 379 - 93
 22.00 Acres

Thomas A. & Kathleen A. McKenna
 342 - 75
 7.18 Acres (Deed)
 7.1285 Ac. Survey Total
 (4.4624 Ac.)

Tract 2
 (0.840 Ac.)

Charles C. & Tamara Wingett III
 Vol. 23 - Pg. 471
 (2.5324 Acres)

Eleanor H. Nims et al.
 288-322 & 299-330

Ervin K. Potratz et al.
 362-13, 366-933, 372-705

John N. & Alice L. Cordray
 350-661
 122.49 Acres

Ronald R. Mullenix
 313-859
 81.06 Acres

N. 1/2 Lot 2

S. 1/2 Lot 2

2.0693 Acres (Surveyed)

Lot No. 3

Lot No. 4

9.5772 Acres

14.79 Acres

30.75 Ac.

L.L. 2

L.L. 1

L.L. 4

L.L. 2

L.L. 2

L.L. 2

L.L. 2

L.L. 2

L.L. 2

L.L. 2

L.L. 2

L.L. 2

L.L. 2

L.L. 2

L.L. 2

L.L. 2

L.L. 2

L.L. 2

L.L. 2

L.L. 2

L.L. 2

L.L. 2

L.L. 2

L.L. 2

L.L. 2

L.L. 2

L.L. 2

L.L. 2

L.L. 2

L.L. 2

L.L. 2

L.L. 2

L.L. 2

L.L. 2

L.L. 2

L.L. 2

L.L. 2

L.L. 2

L.L. 2

L.L. 2

L.L. 2

L.L. 2

L.L. 2

L.L. 2

L.L. 2

L.L. 2

L.L. 2

L.L. 2

L.L. 2

L.L. 2

L.L. 2

L.L. 2

L.L. 2

L.L. 2

L.L. 2

L.L. 2

L.L. 2

L.L. 2

L.L. 2

L.L. 2

L.L. 2

L.L. 2

L.L. 2

L.L. 2

L.L. 2

L.L. 2

L.L. 2

L.L. 2

L.L. 2

L.L. 2

L.L. 2

L.L. 2

L.L. 2

L.L. 2

L.L. 2

L.L. 2

L.L. 2

L.L. 2

L.L. 2

L.L. 2

L.L. 2

L.L. 2

L.L. 2

L.L. 2

L.L. 2

L.L. 2

L.L. 2

L.L. 2

L.L. 2

L.L. 2

L.L. 2

L.L. 2

L.L. 2

L.L. 2

L.L. 2

L.L. 2

L.L. 2

L.L. 2

L.L. 2

L.L. 2

L.L. 2

L.L. 2

L.L. 2

L.L. 2

L.L. 2

L.L. 2

L.L. 2

L.L. 2

L.L. 2

L.L. 2

L.L. 2

L.L. 2

L.L. 2

L.L. 2

L.L. 2

L.L. 2

L.L. 2

L.L. 2

L.L. 2

L.L. 2

L.L. 2

L.L. 2

L.L. 2

L.L. 2

L.L. 2

L.L. 2

L.L. 2

L.L. 2

L.L. 2

L.L. 2

L.L. 2

L.L. 2

L.L. 2

L.L. 2

L.L. 2

L.L. 2

L.L. 2

L.L. 2

L.L. 2

L.L. 2

L.L. 2

L.L. 2

L.L. 2

L.L. 2

L.L. 2

L.L. 2

L.L. 2

L.L. 2

L.L. 2

L.L. 2

L.L. 2

L.L. 2

L.L. 2

L.L. 2

L.L. 2

L.L. 2

L.L. 2

L.L. 2

L.L. 2

L.L. 2

L.L. 2

L.L. 2

L.L. 2

L.L. 2

L.L. 2

L.L. 2

L.L. 2

L.L. 2

L.L. 2

L.L. 2

L.L. 2

L.L. 2

L.L. 2

L.L. 2

L.L. 2

L.L. 2

L.L. 2

L.L. 2

L.L. 2

L.L. 2

L.L. 2

L.L. 2

L.L. 2

L.L. 2

L.L. 2

L.L. 2

L.L. 2

L.L. 2

L.L. 2

L.L. 2

L.L. 2

L.L. 2

L.L. 2

L.L. 2

L.L. 2

L.L. 2

L.L. 2

L.L. 2

L.L. 2

L.L. 2

L.L. 2

L.L. 2

L.L. 2

L.L. 2

L.L. 2

L.L. 2

L.L. 2

L.L. 2

L.L. 2

L.L. 2

L.L. 2

L.L. 2

L.L. 2

L.L. 2

L.L. 2

L.L. 2

L.L. 2

L.L. 2

L.L. 2

L.L. 2

L.L. 2

L.L. 2

L.L. 2

L.L. 2

L.L. 2

L.L. 2

L.L. 2