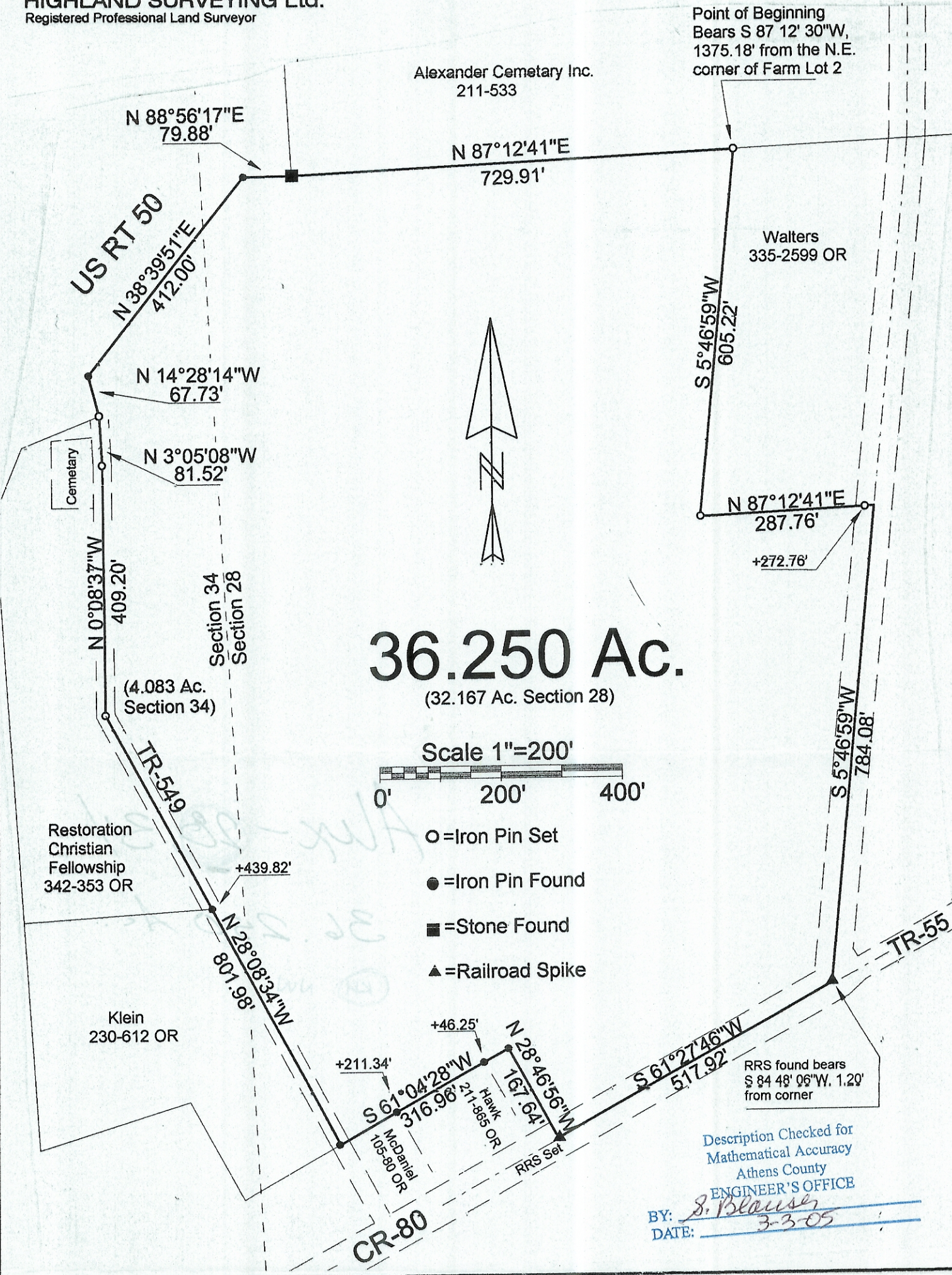


Alexander Cemetary Inc.  
211-533

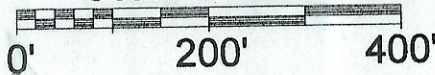
Point of Beginning  
Bears S 87° 12' 30" W,  
1375.18' from the N.E.  
corner of Farm Lot 2



**36.250 Ac.**

(32.167 Ac. Section 28)

Scale 1"=200'



- O = Iron Pin Set
- = Iron Pin Found
- = Stone Found
- ▲ = Railroad Spike

Description Checked for  
Mathematical Accuracy  
Athens County  
ENGINEER'S OFFICE  
BY: S. Blaus  
DATE: 3-3-05

PLAT OF SURVEY OF A 36.250 Ac. TRACT

SURVEYED FOR VARNAGOLLE / GIVAS

SUBDIVISION FARM LOT 2

TOWNSHIP ALEXANDER SECTION 28 & 34 TOWN B RANGE 4

CORPORATION — COUNTY ATHENS STATE OHIO

SCALE 1"= 200' DATE FEB, 2005

Kenneth E. Highland  
80 Fayette St.  
Nelsonville, Ohio 45764  
740-753-1264



Kenneth E. Highland S-7581