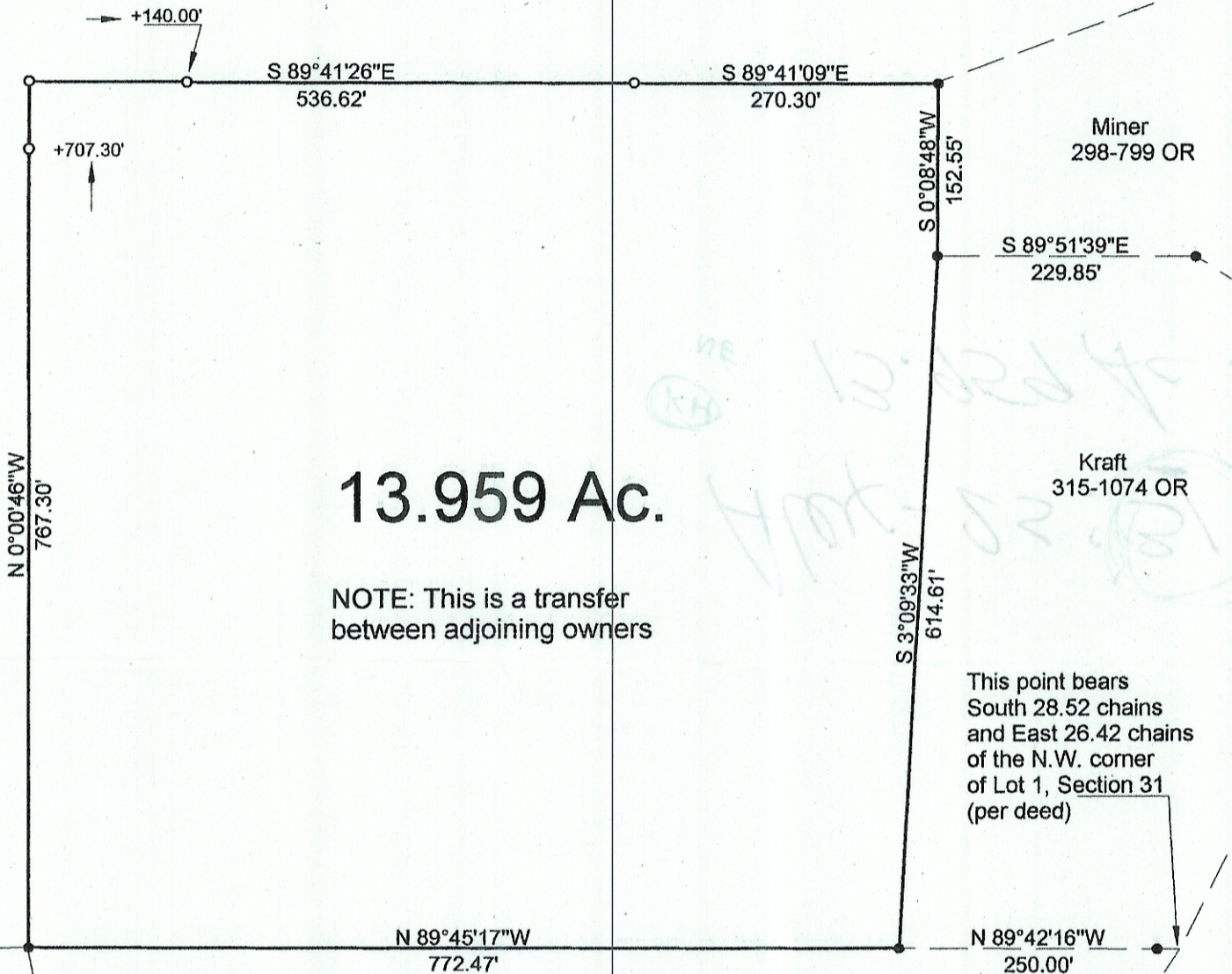
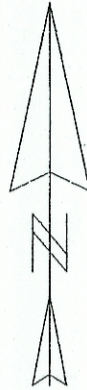


HIGHLAND SURVEYING Ltd.
Registered Professional Land Surveyor

Carter
369-523

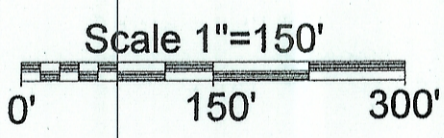


13.959 Ac.

NOTE: This is a transfer
between adjoining owners

This point bears
South 28.52 chains
and East 26.42 chains
of the N.W. corner
of Lot 1, Section 31
(per deed)

- = Iron Pin Set
 - = Iron Pin Found
- Dalton
258-744 OR



Description Checked for
Mathematical Accuracy
Athens County
ENGINEER'S OFFICE
BY: S. Blause
DATE: 9-27-04

TR-42

PLAT OF SURVEY OF A 13.959 Ac. TRACT

SURVEYED FOR FRANK KRAFT

SUBDIVISION FARM LOT 1

TOWNSHIP ALEXANDER SECTION 25 TOWN 8 RANGE 14

CORPORATION - COUNTY ATHENS STATE OHIO

SCALE 1" = 150' DATE SEPT. 2004

Kenneth E. Highland
80 Fayette St.
Nelsonville, Ohio 45764
740-753-1264

