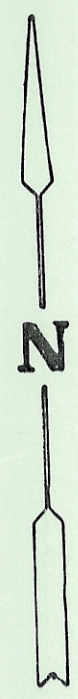
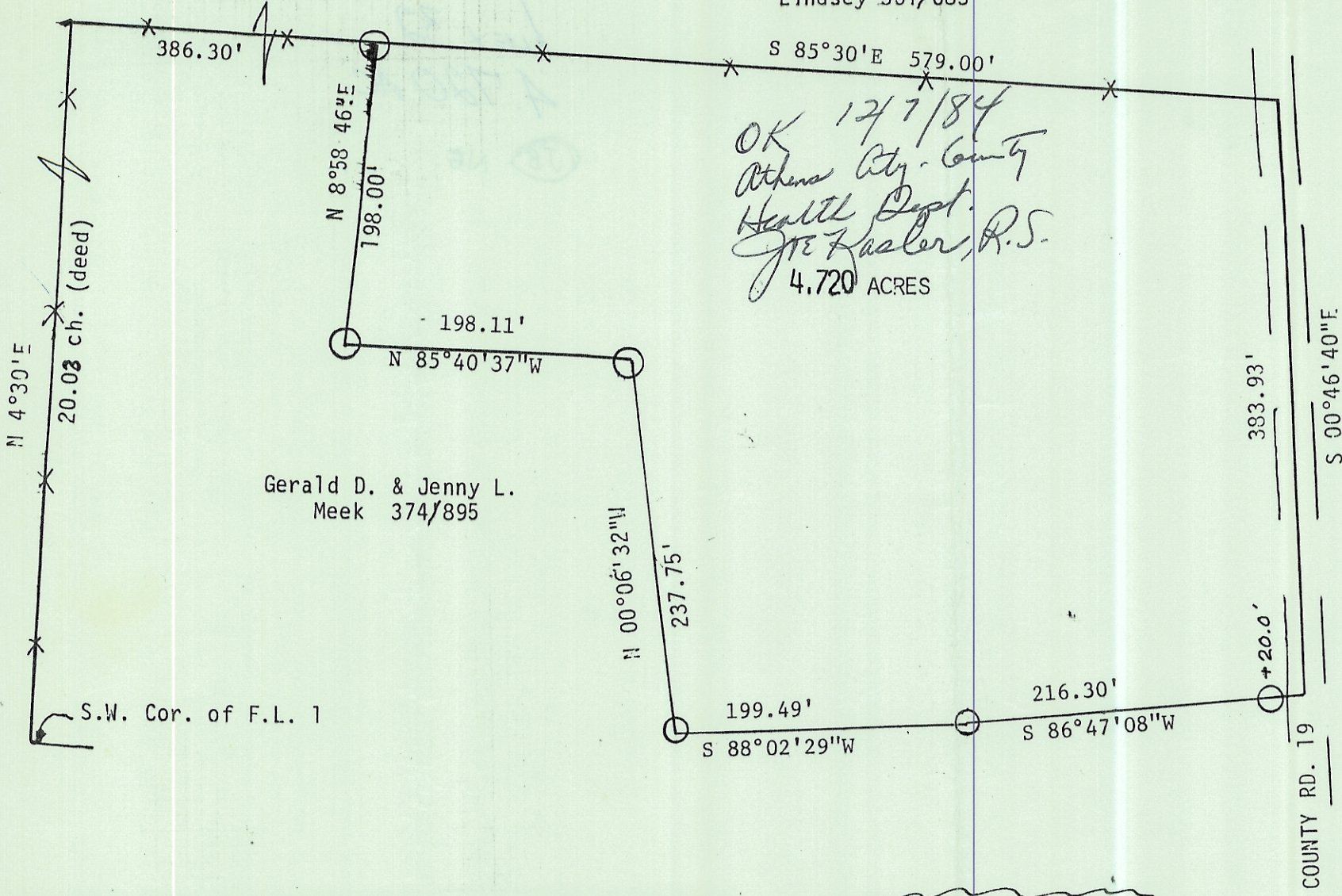


Lindsey 361/683

OK 12/7/84
Athens City-County
Health Dept.
JTE Hasler, R.S.
4.720 ACRES

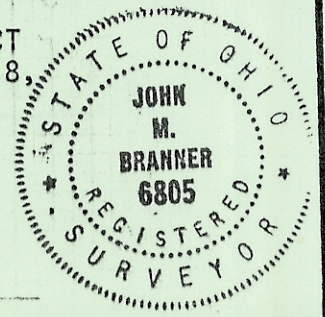
Gerald D. & Jenny L.
Meek 374/895



1"=100'
IronPin Set

SURVEY OF A 4.720 ACRE TRACT
IN FARMLOT-1, SECTION 32, T.8,
R.14, ALEXANDER TOWNSHIP,
ATHENS COUNTY, OHIO

SURVEYED NOV. 84
John M. Branner
John M. Branner R.L.S. 6805



Checked for Accuracy
12-4-84 by:
Annie Stanley
Athens County Engineer

[Handwritten scribble]