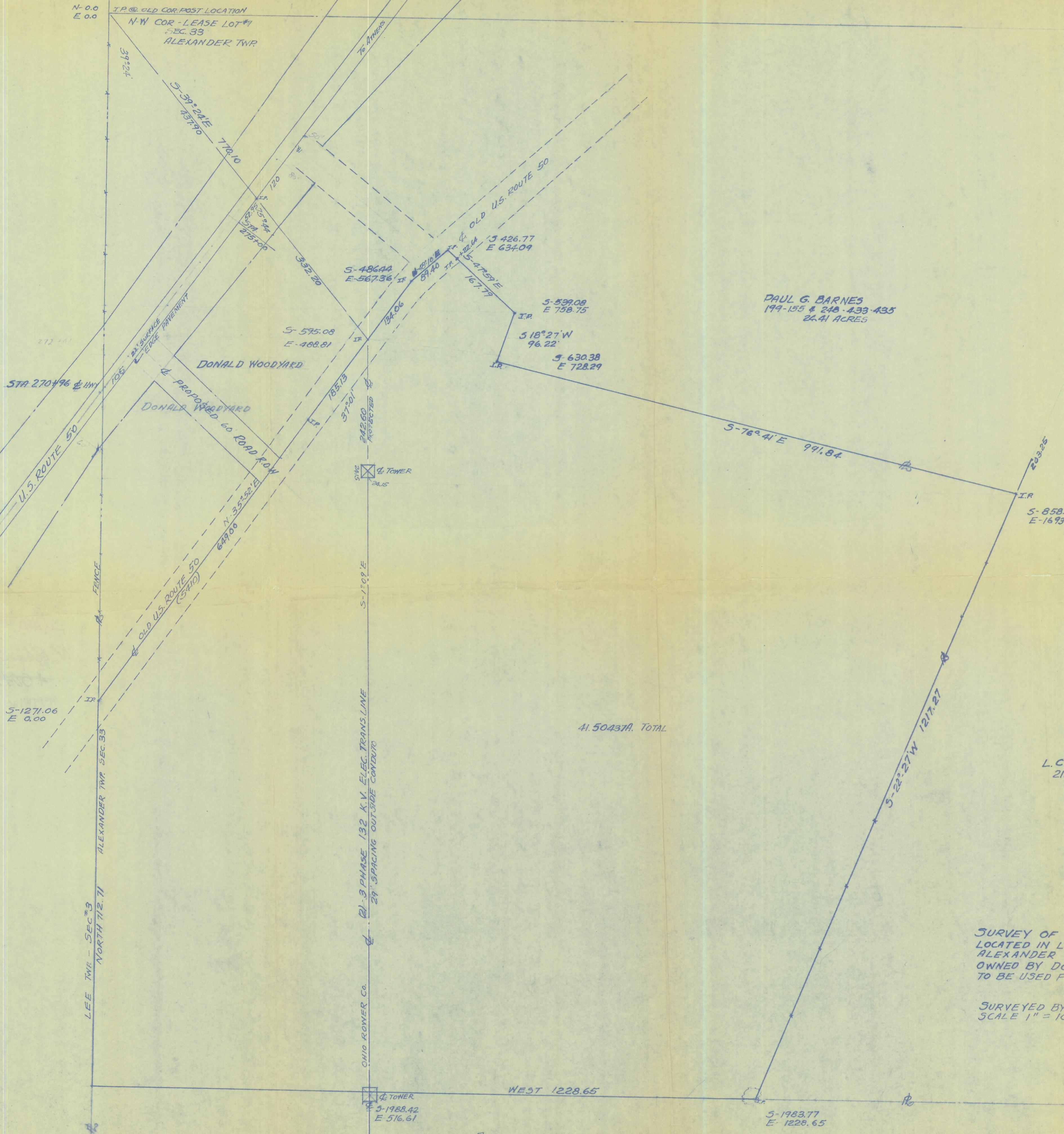


N-0.0
E-0.0
I.P. @ OLD COR. POST LOCATION
N-W COR - LEASE LOT #1
SEC. 33
ALEXANDER TWP



PAUL G. BARNES
199-155 & 248-433-435
22.41 ACRES

L.C. RICKARD
211-179

ROBERT L. GENEVIEVE GRINSTEAD
196-485
80.57 ACRES

41.50437A. TOTAL

SURVEY OF 41.49181 ACRES
LOCATED IN LEASE LOT No. 1 - SEC. 33
ALEXANDER TWP, ATHENS CO, OHIO.
OWNED BY DONALD WOODYARD
TO BE USED FOR NEW HIGH SCHOOL LOCATION

SURVEYED BY F.A. DIXON
SCALE 1" = 100 DEC. 12, 1964

LEE TWP - SEC. 33
NORTH 712.71

ALEXANDER TWP SEC. 33

OHIO POWER Co.
29' SPACING OUTSIDE CONTOUR

TOWER

TOWER
S-1988.42
E-516.61

WEST 1228.65

S-1983.77
E-1228.65

S-1271.06
E-0.00

S-595.08
E-488.81

S-486.44
E-567.36

S-426.77
E-634.09

S-599.08
E-758.75

S-18°27'W
96.22

S-630.38
E-728.29

S-76°41'E 991.84

S-858.75
E-1693.48

S-22°27'W 1271.27

FENCE

DONALD WOODYARD
DONALD WOODYARD
PROPOSED 60' ROAD ROW

DONALD WOODYARD

770.10

720

720

392.20

84.06

167.79

1542.60

28.6

1851.9

57.01

2157.00

120

120

120

120

120

120

120

120

120

120

120

120

120

120

120

120

120

120

120

120

120

120

120

120

120

120

120

120

120

120

120

120

120

120

120

120

120

120

120

120

120

120

120

120

120

120

120

120

120

120

120

120

120

120

120

120

120

120

120

120

120

120

120

120

120

120

120

120

120

120