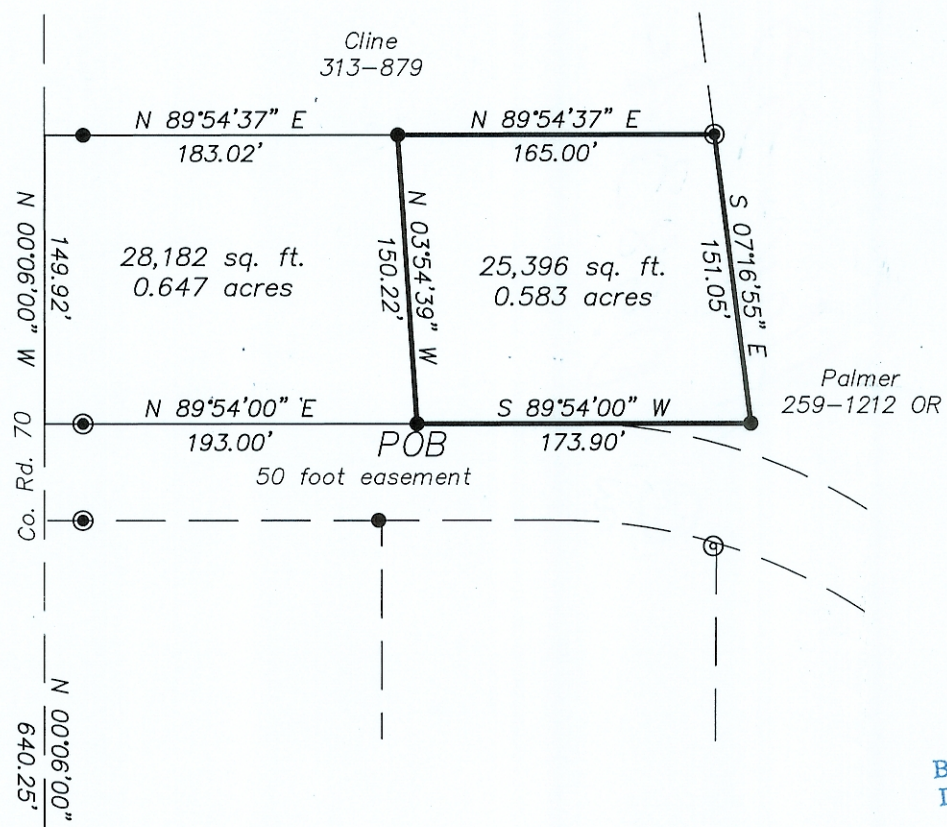
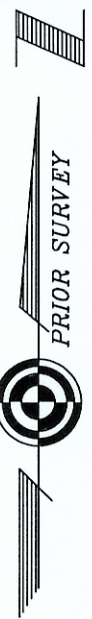
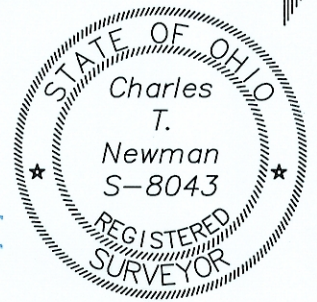


*OK. to transfer  
George Thomas, Mayor  
July 17, 2007*

**Plat of Survey of 0.583 Acres  
Situating in Section 33, Town 8,  
Range 14, Alexander Township,  
Athens County, Ohio  
Surveyed June 2007 for:  
Carl Hawk**

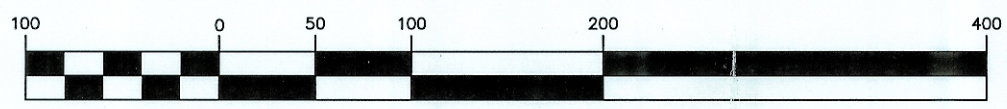
*Charles T. Newman*  
**Charles T. Newman**

Description Checked for  
Mathematical Accuracy  
Athens County  
ENGINEER'S OFFICE  
BY: *S. Blaise*  
DATE: *6-28-07*



- ⊙ = Iron Pin Found
- = Iron Pin Set

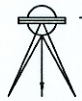
**GRAPHIC SCALE**



( IN FEET )  
1 inch = 100 ft.

Member of Professional Land Surveyors of Ohio      Land Surveys, Subdivisions

**C. TIM NEWMAN**  
Professional Surveyor



66 Elmwood Place      740-594-1884  
Athens, Ohio 45701      FAX 740-594-9413