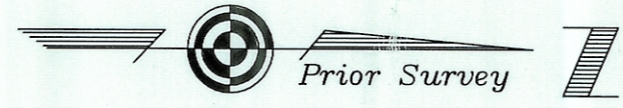


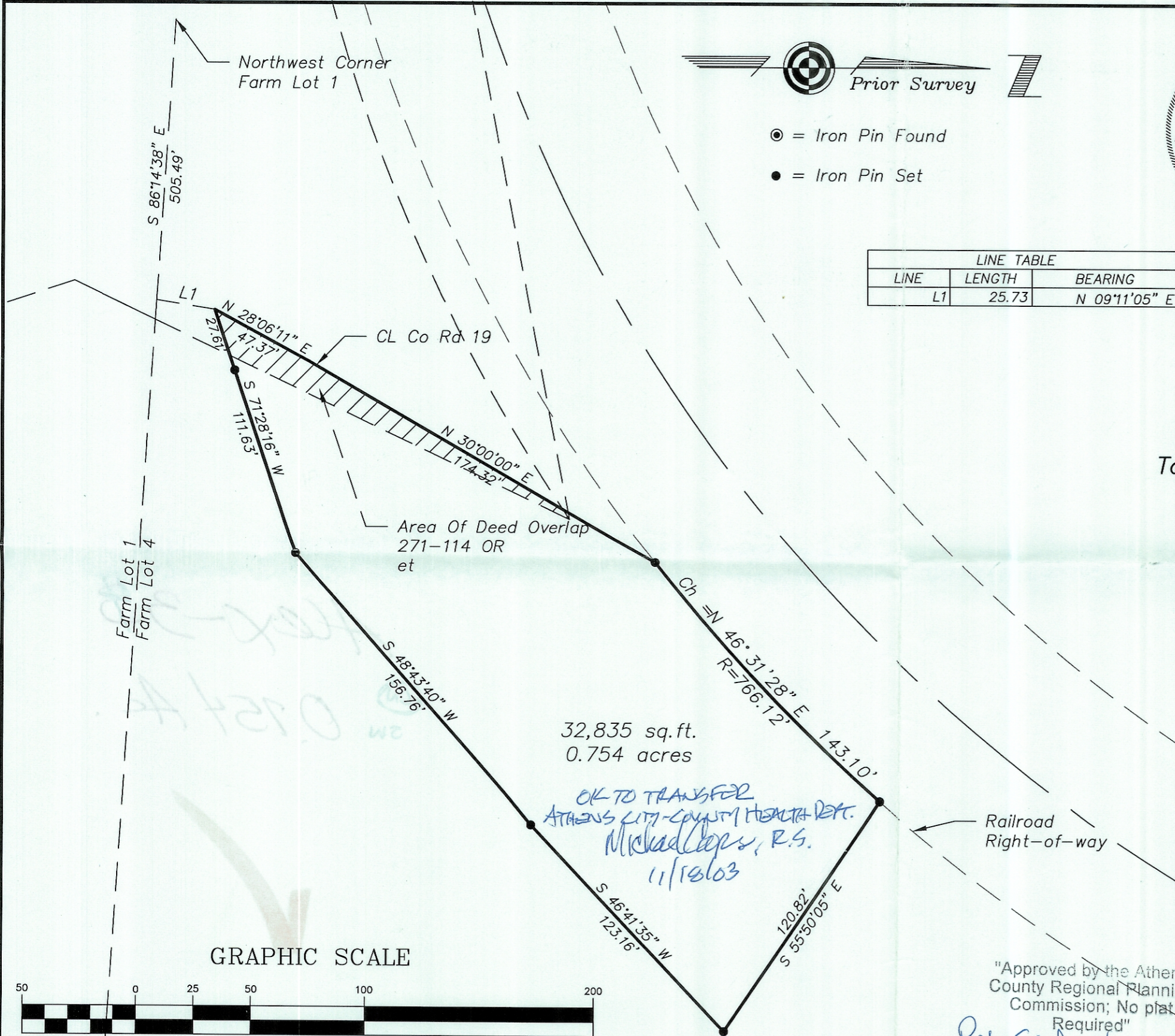
C. TIM NEWMAN
Professional Surveyor

66 Elmwood Place Athens, Ohio 45701 740-594-1884
FAX 740-594-9413



⊙ = Iron Pin Found
● = Iron Pin Set

LINE TABLE		
LINE	LENGTH	BEARING
L1	25.73	N 09°11'05" E



Plat of Survey of 0.754 Acres
Situated in Farm Lot 4, Section 33,
Town 8, Range 14, Alexander Township,
Athens County, Ohio
Surveyed November 2003 for:
Douglas Smith

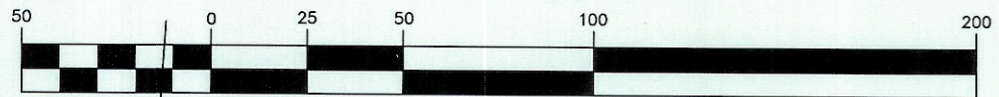
Charles T. Newman
Charles T. Newman

OK TO TRANSFER
ATHENS CITY-COUNTY HEALTH DEPT.
Michael Capps, R.S.
11/18/03

Description checked for
Mathematical Accuracy
ATHENS COUNTY
ENGINEER'S OFFICE
BY: *S. Blause*
DATE: *11-7-03*

"Approved by the Athens
County Regional Planning
Commission; No plat
Required"
Bob Eichenberg 11-18-03
Planning Director *AT* Date

GRAPHIC SCALE



(IN FEET)
1 inch = 50 ft.